

# 演題1 国立がん研究センター東病院症例

## 70歳代 男性

### 【既往歴】

- 前立腺癌(21年前)、全摘後、陽子線治療施行後
- 下咽頭癌(初回生検の5か月前)、手術、扁平上皮癌 pStage IVA

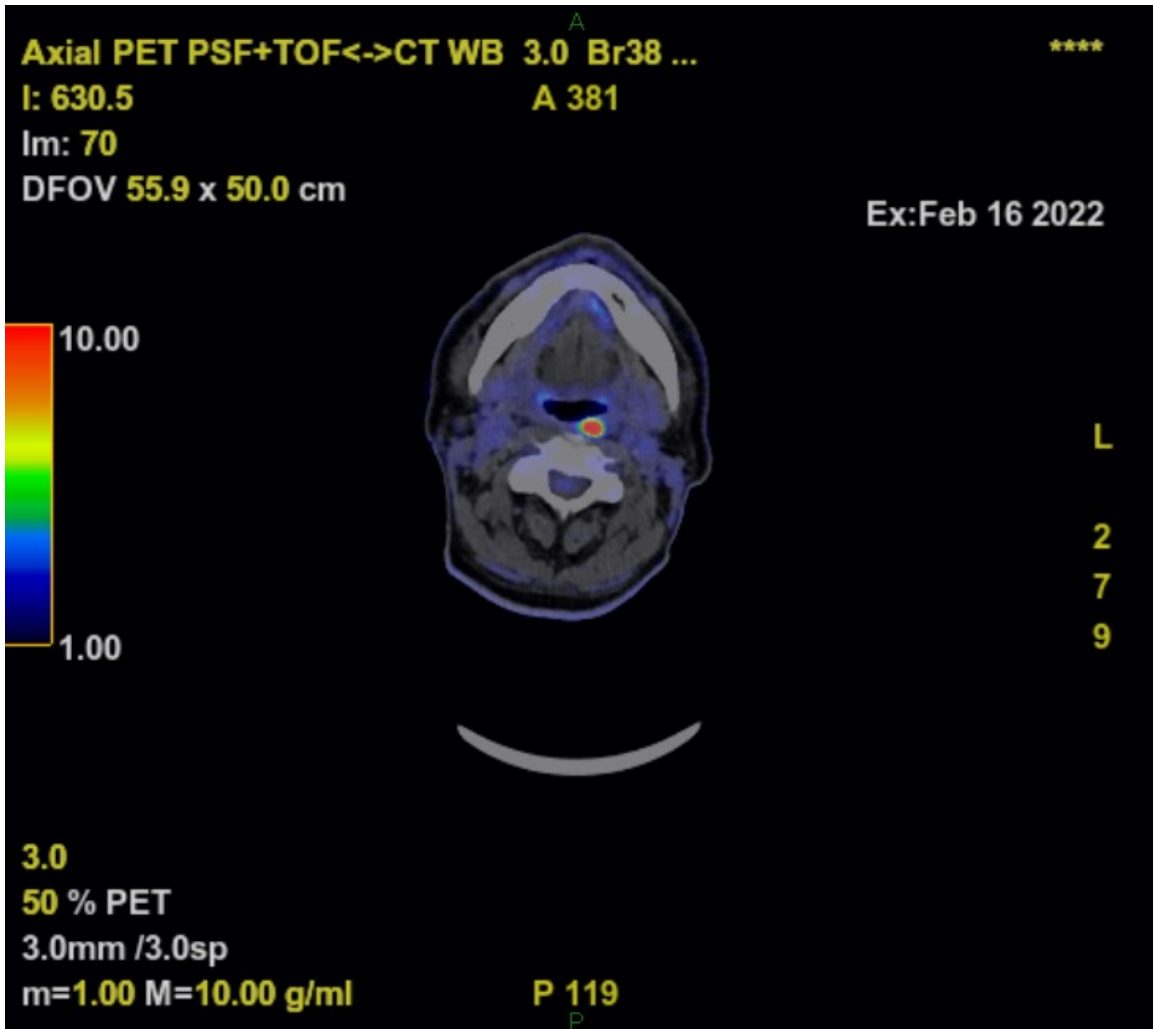
### 【経過】

下咽頭癌術後フォロー目的のPET-CTで指摘された右骨盤部軟部腫瘍(前立腺癌転移疑い)に対して生検施行(1回目)

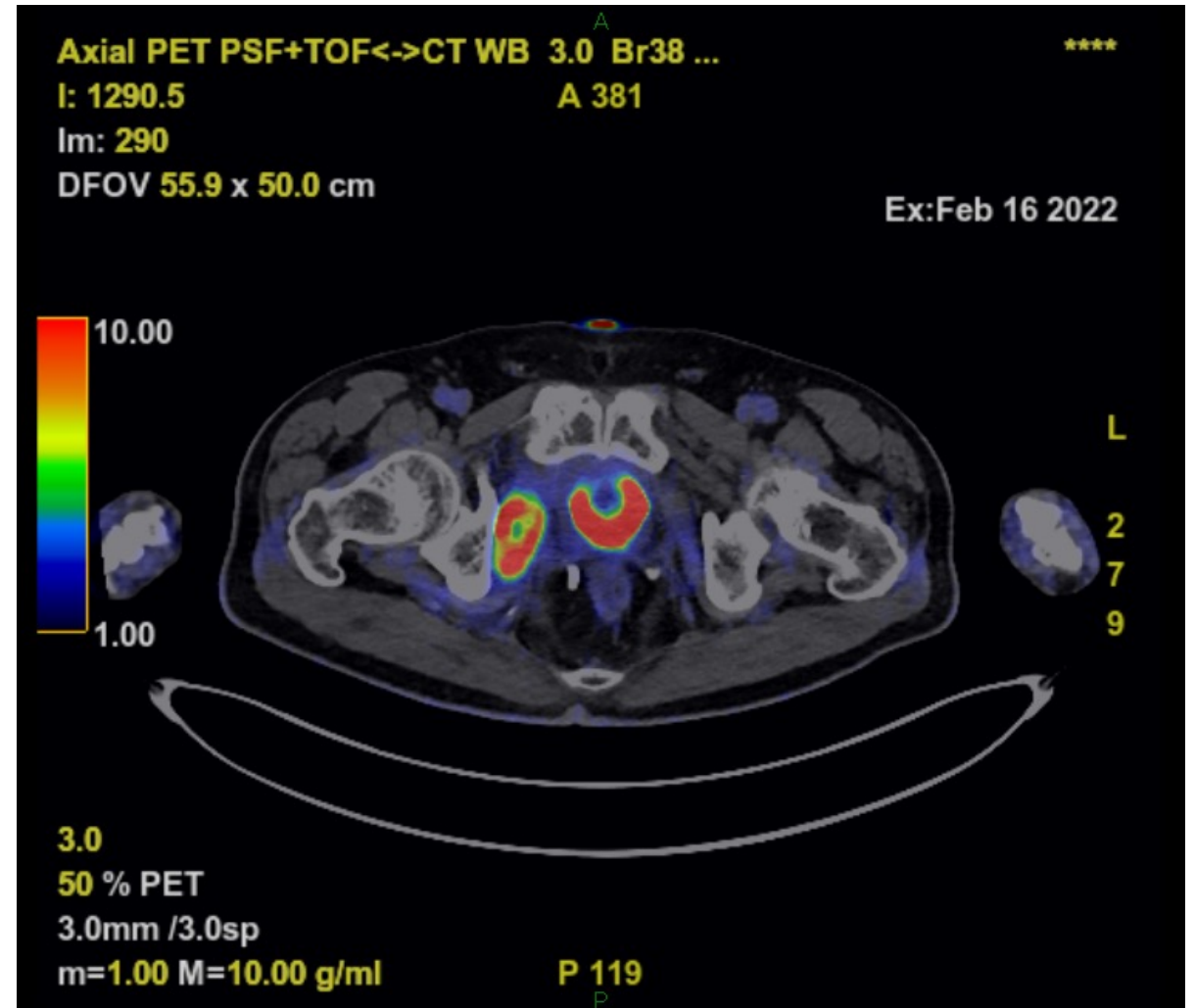
病理診断がつかず、下咽頭癌追加治療後に再度生検(2回目)

# PET-CT

左ルビエールリンパ節転移  
(下咽頭癌術後4か月)



右骨盤内軟部腫瘍



# MRI

MRI T1W

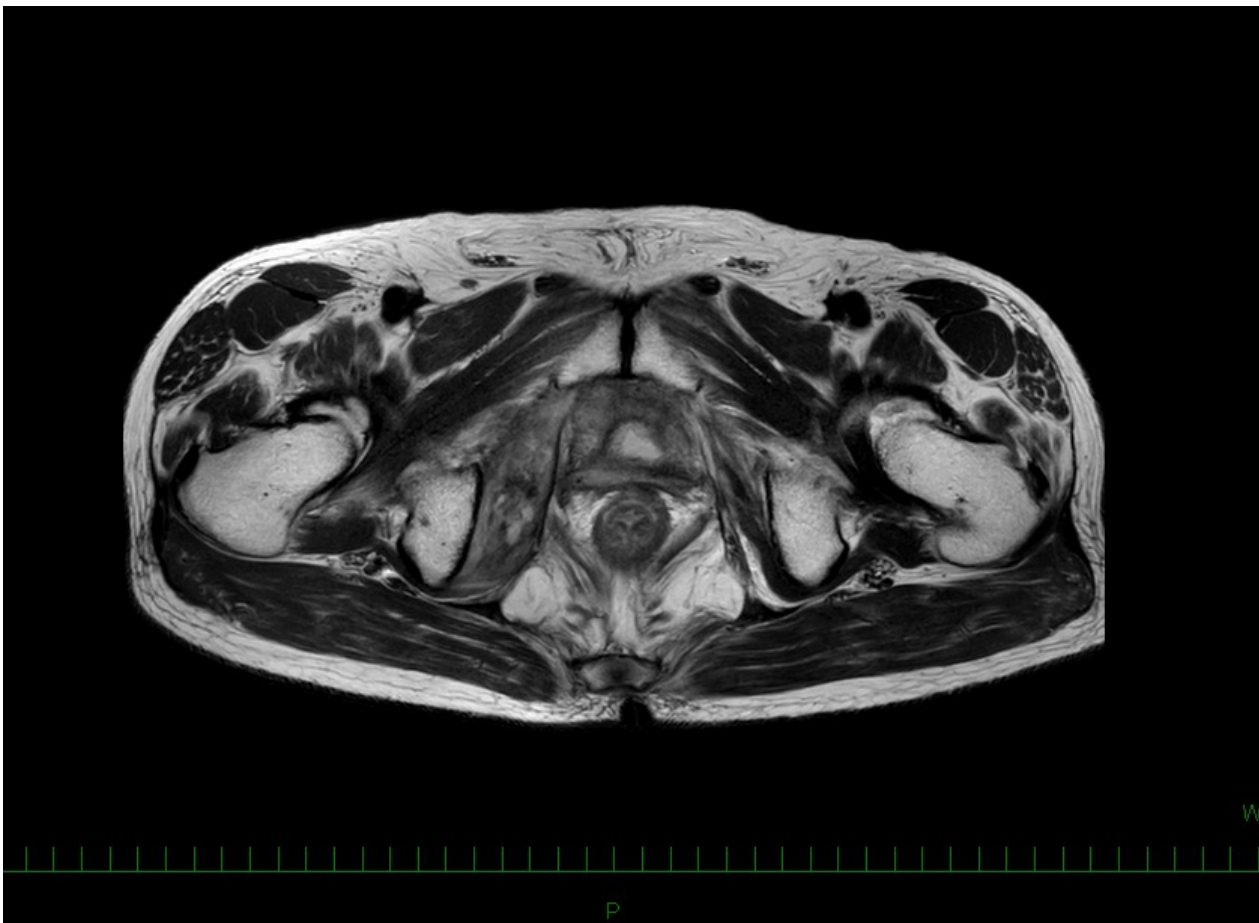


MRI T2W

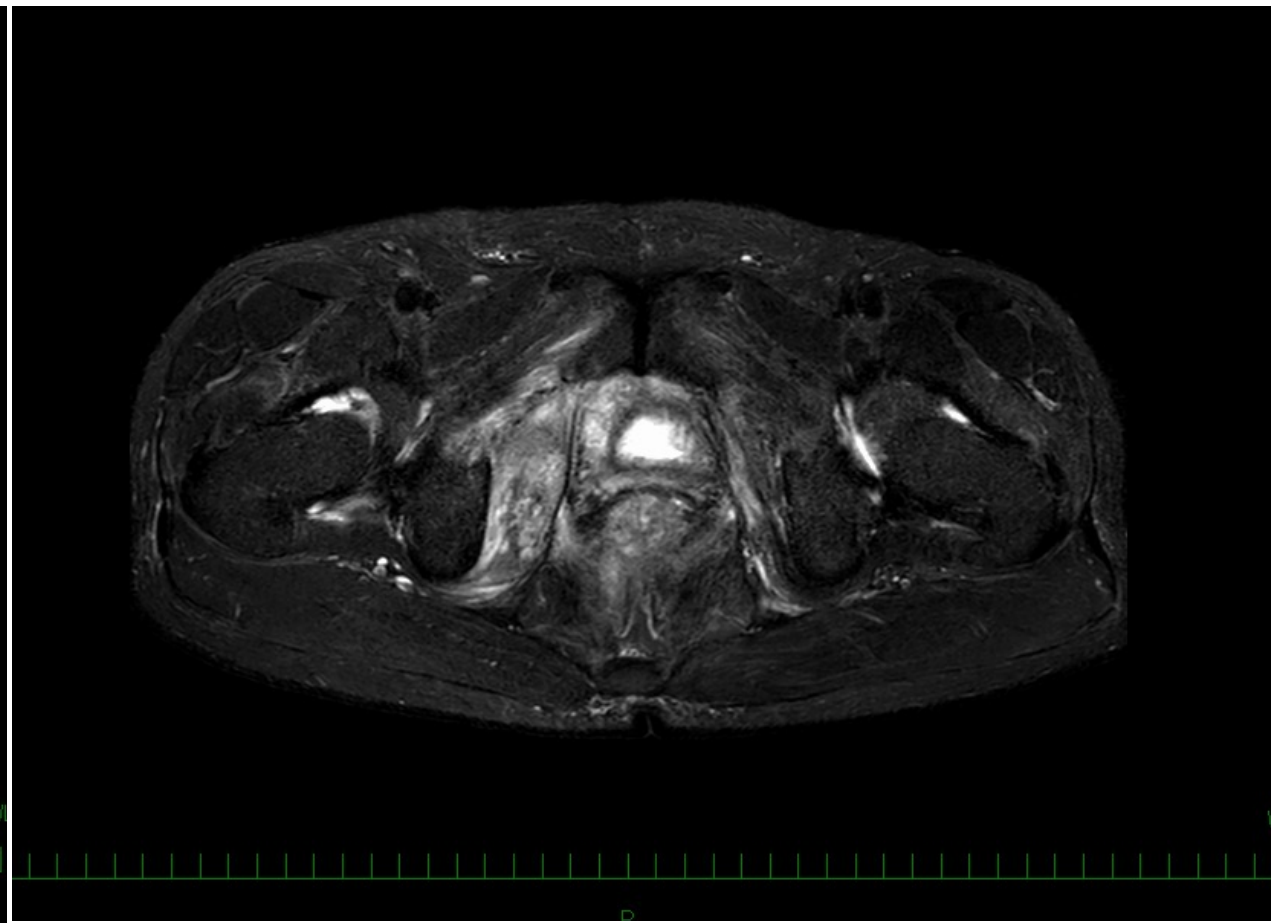


# MRI

MRI T2W

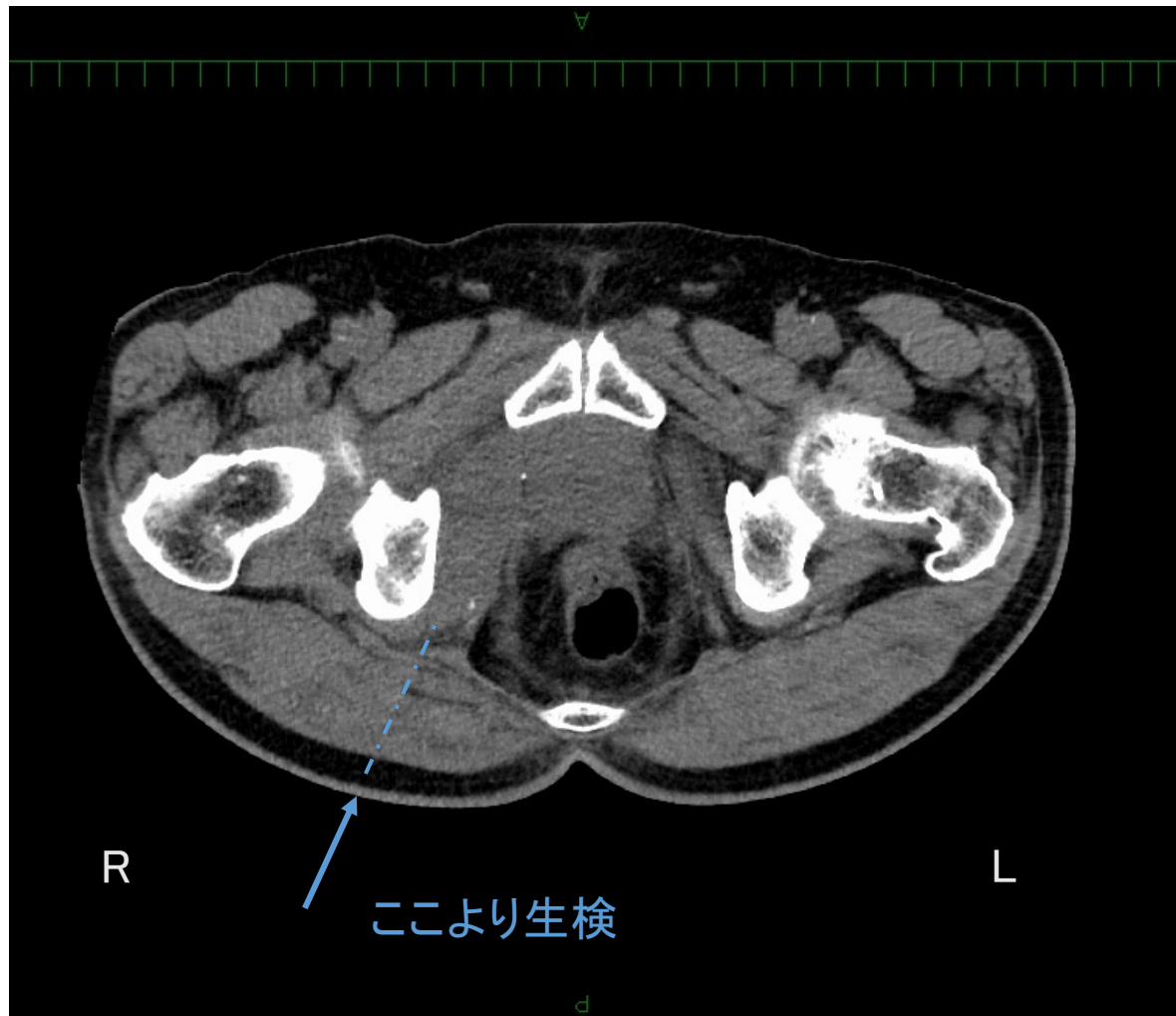


MRI STIR TRA

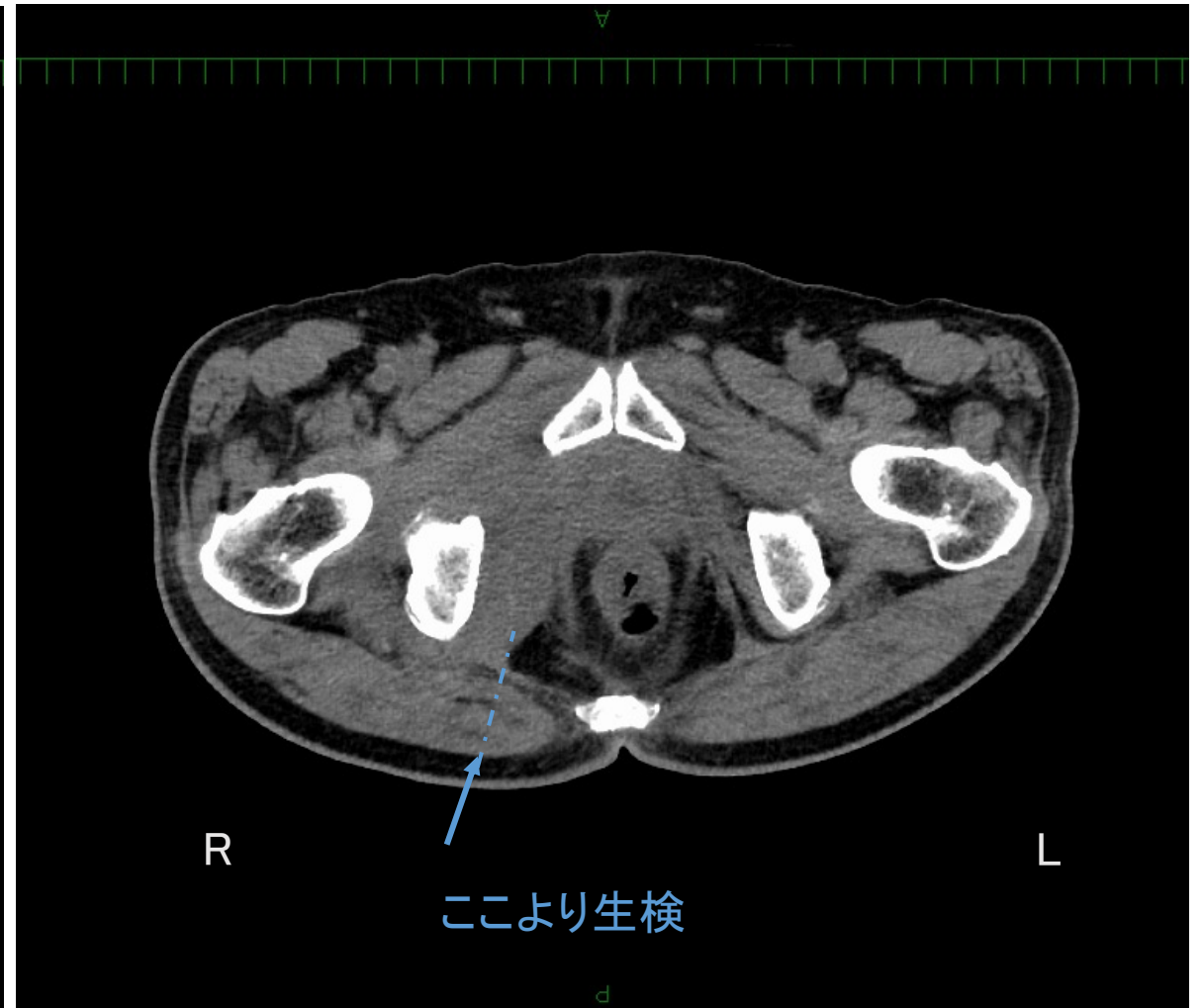


# CT (伏臥位を180度回転)

1回目生検



2回目生検(1回目から3か月後)

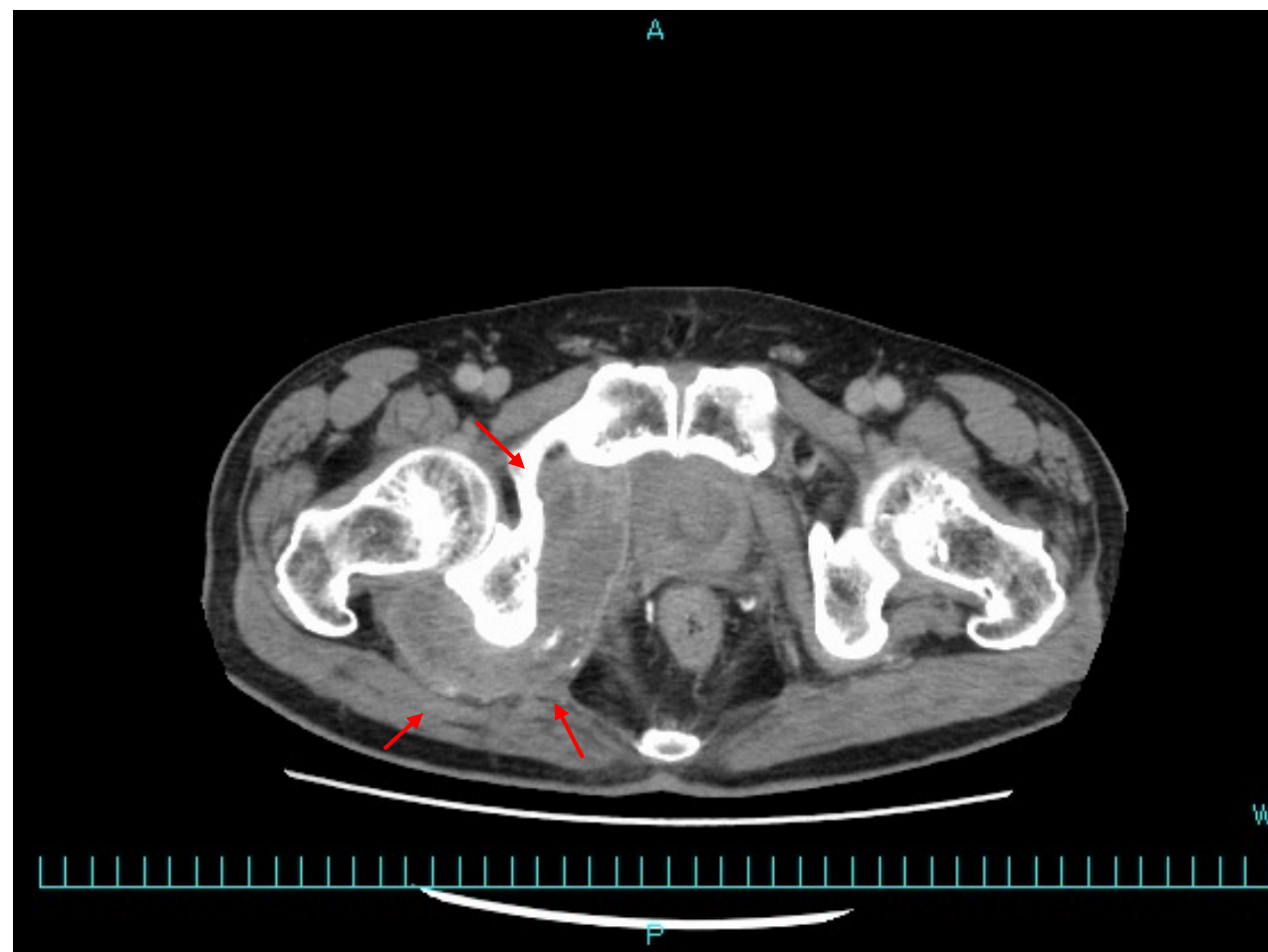


# CT

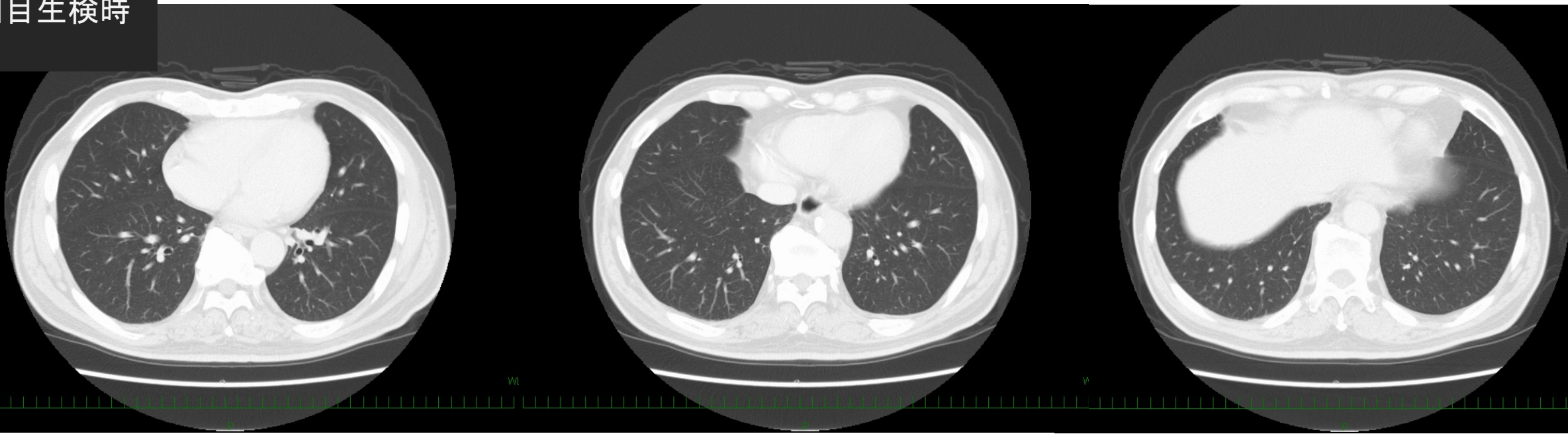
初回生検時  
CT



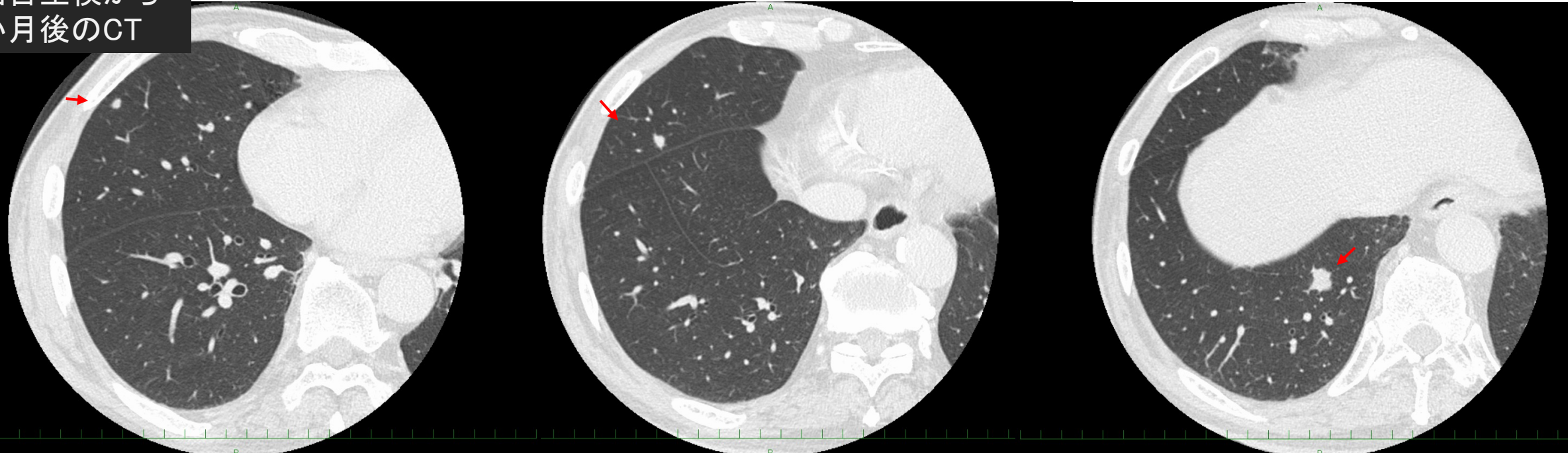
初回生検から  
5か月後のCT



1回目生検時  
CT



1回目生検から  
5か月後のCT



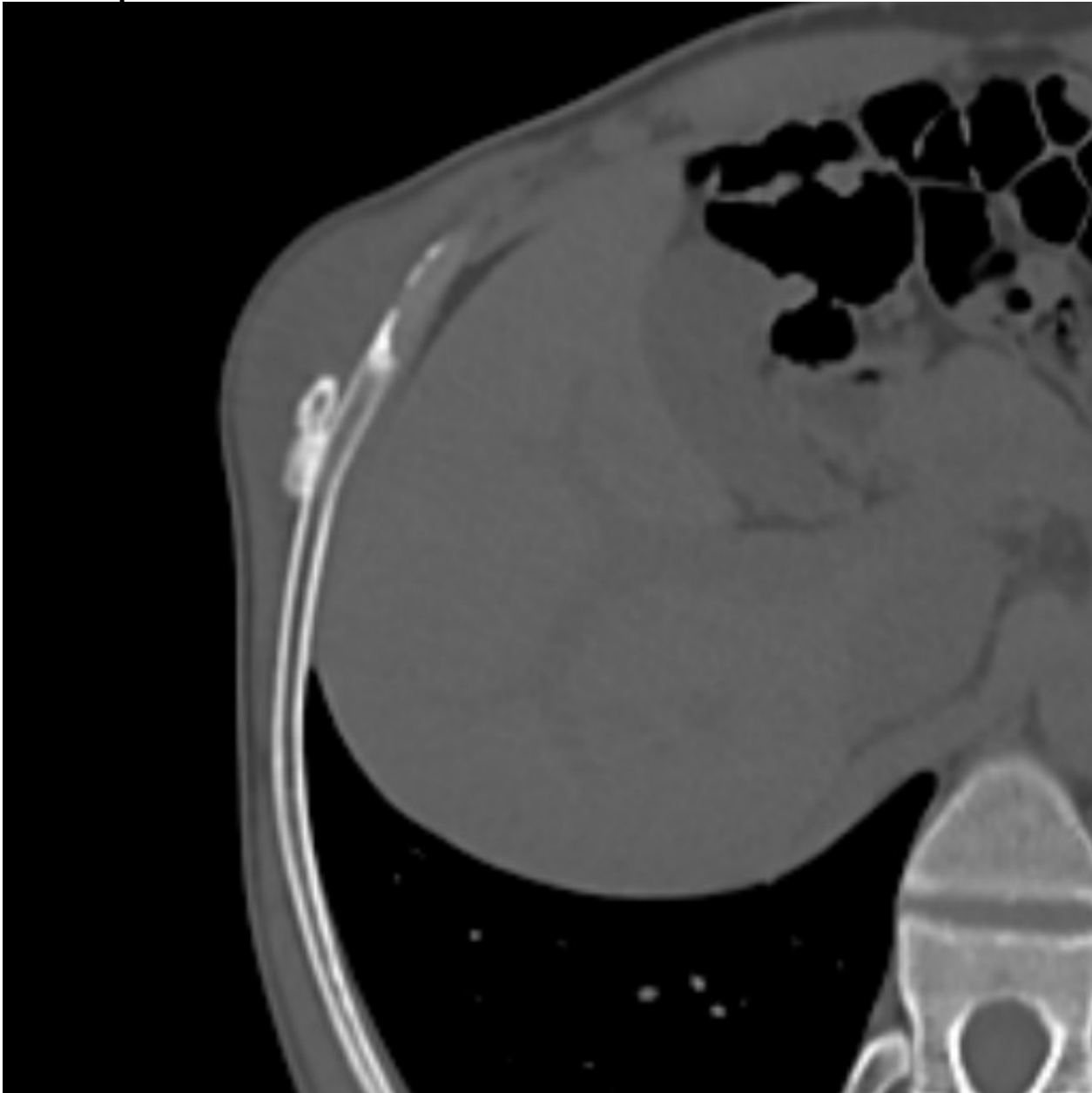
# 演題2

右側胸部腫瘍

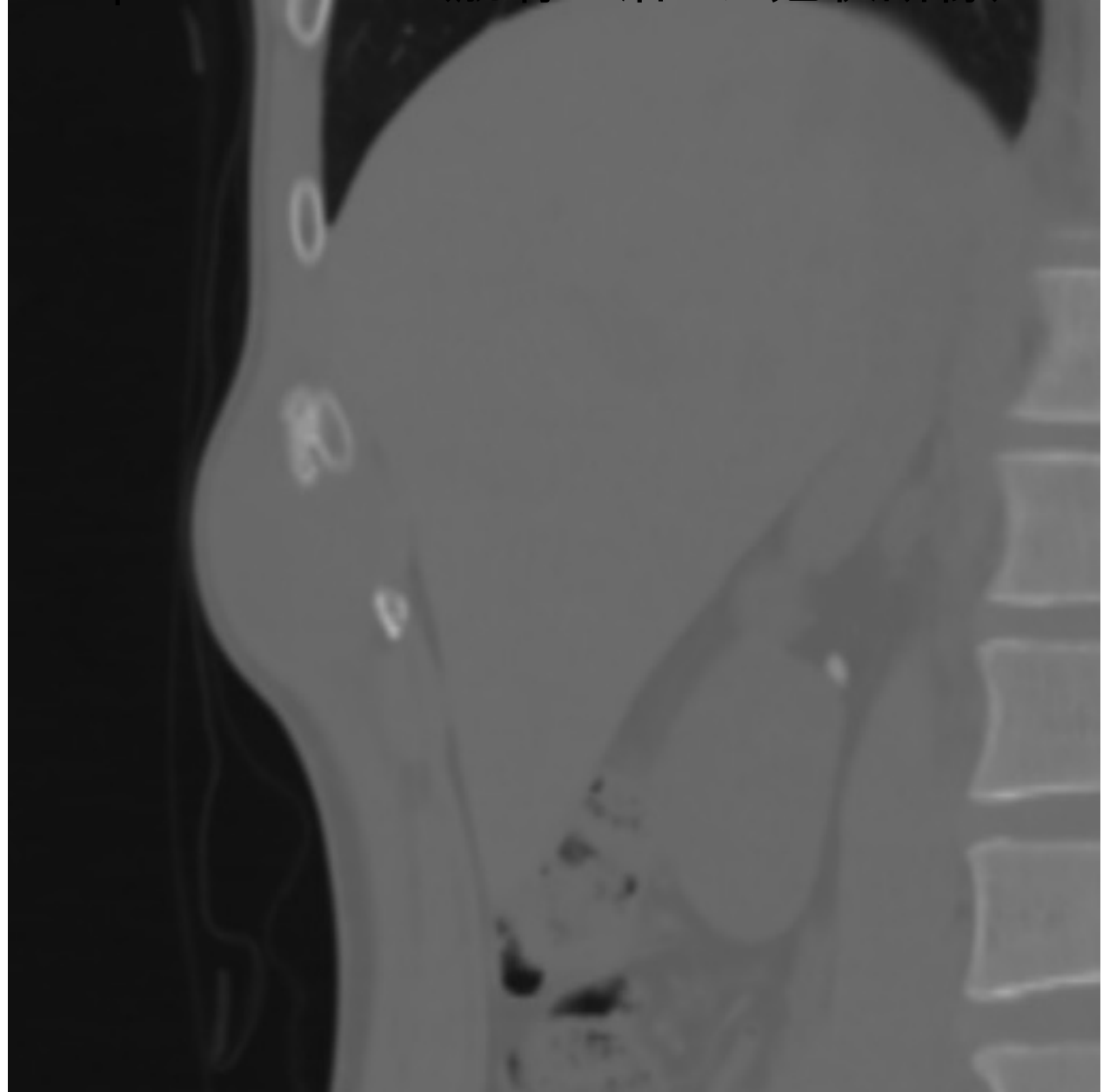
30歲代前半男性



oblique axial view (肋骨に沿った横断像)



oblique axial view (肋骨に沿った冠状断像)



骨条件CT

oblique axial view (肋骨に沿った冠状断像)



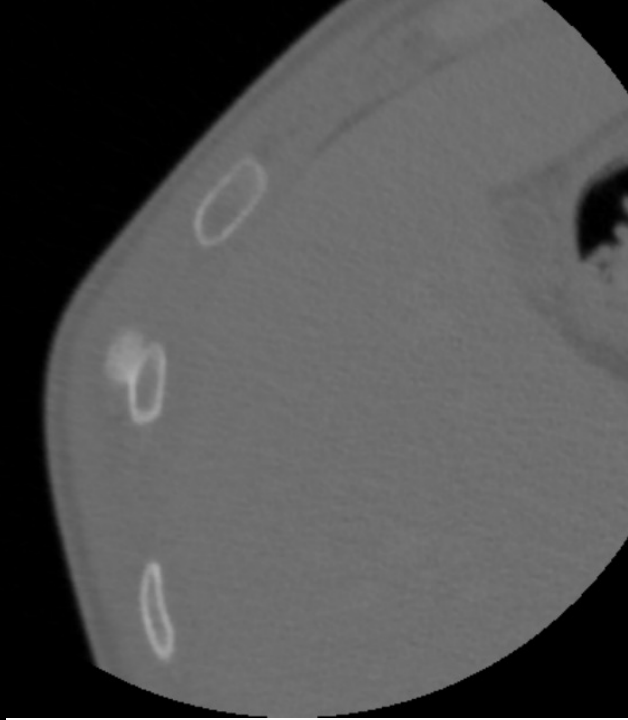
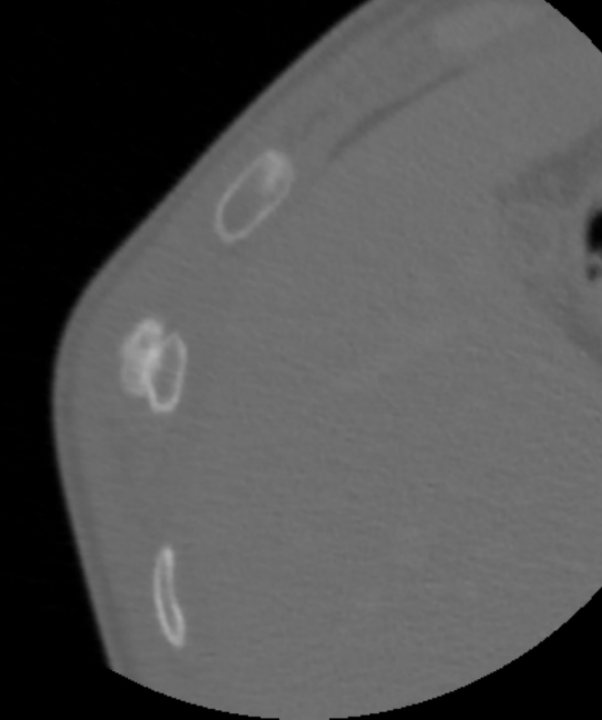
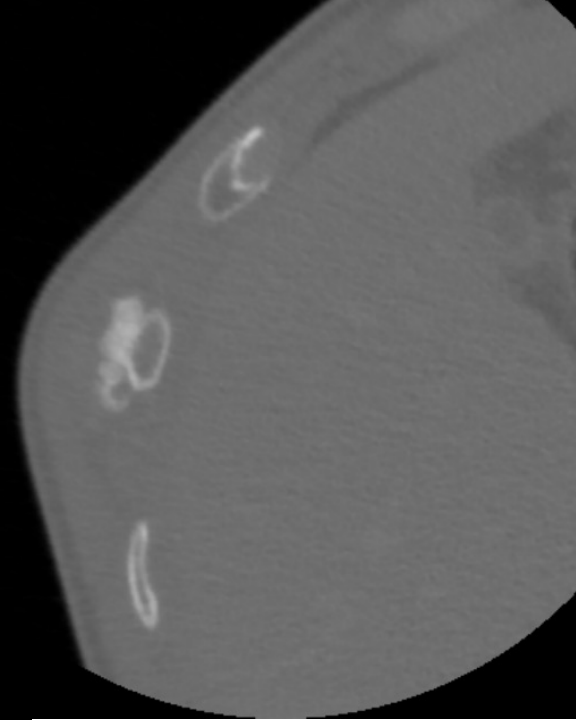
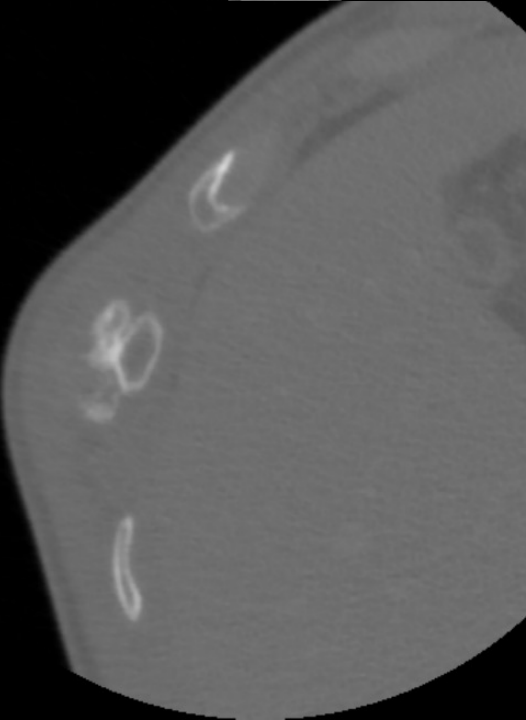
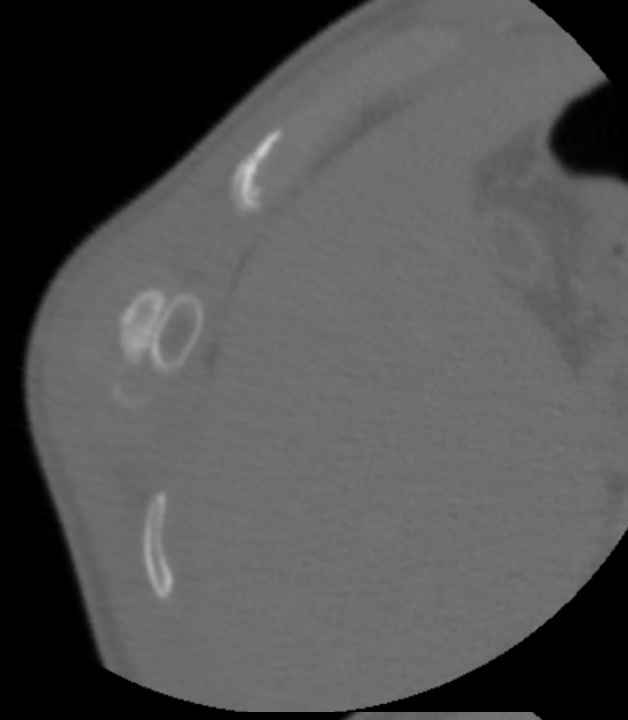
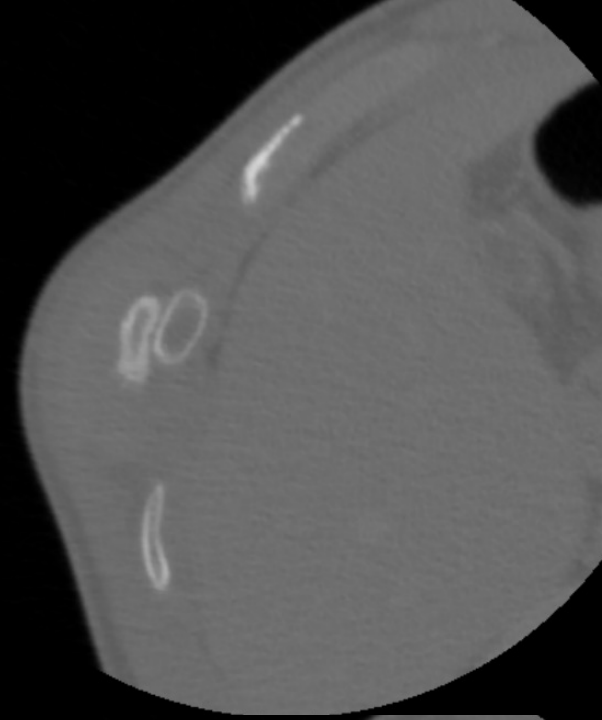
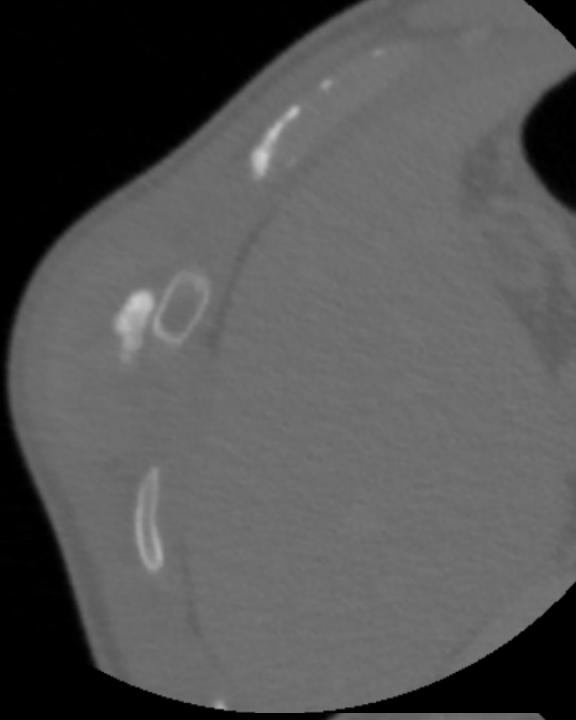
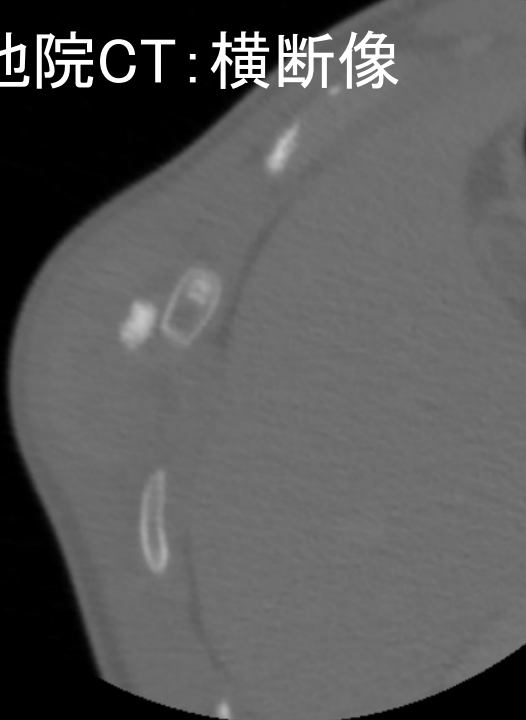
骨条件CT 他院画像

oblique axial view (肋骨に沿った横断像)

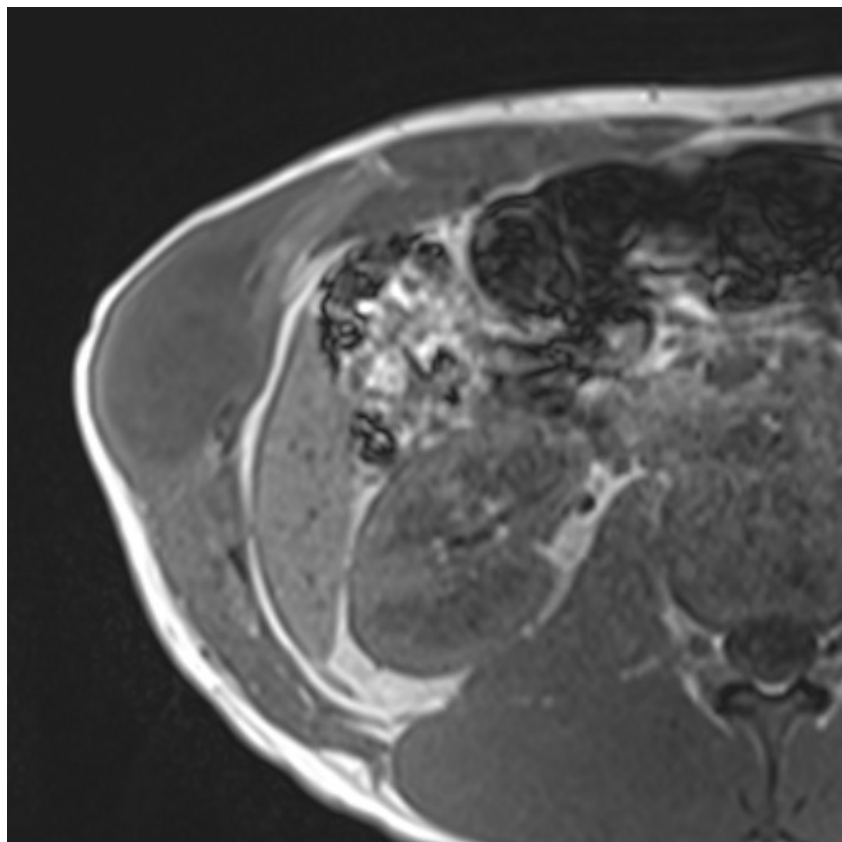


軟部条件CT

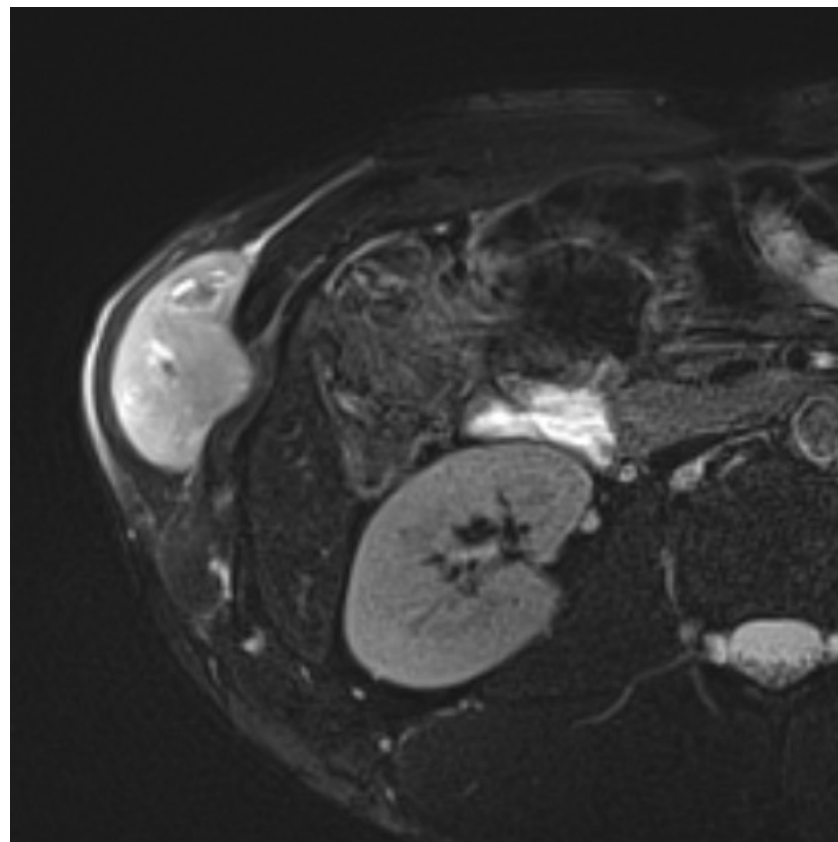
他院CT:横断像



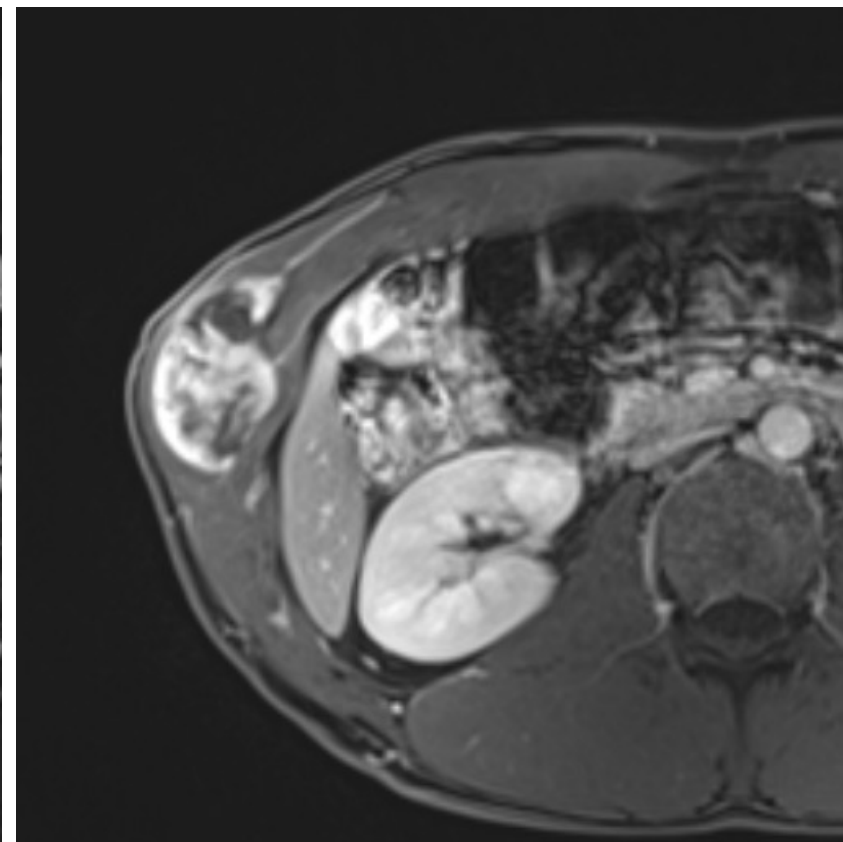
oblique axial view (肋骨に沿った横断像)



T1強調画像

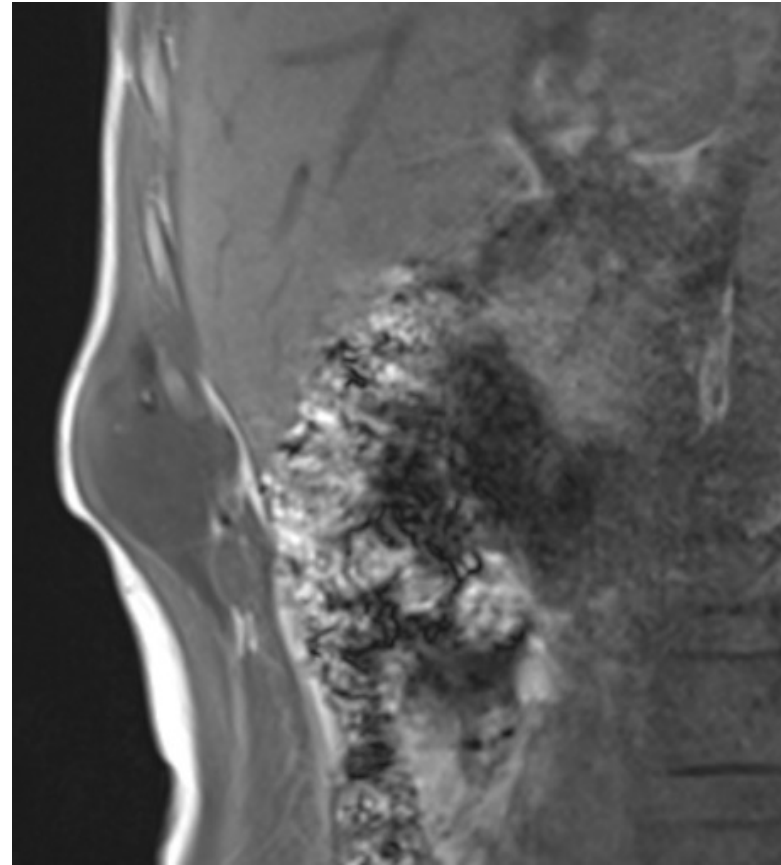


脂肪抑制T2強調画像

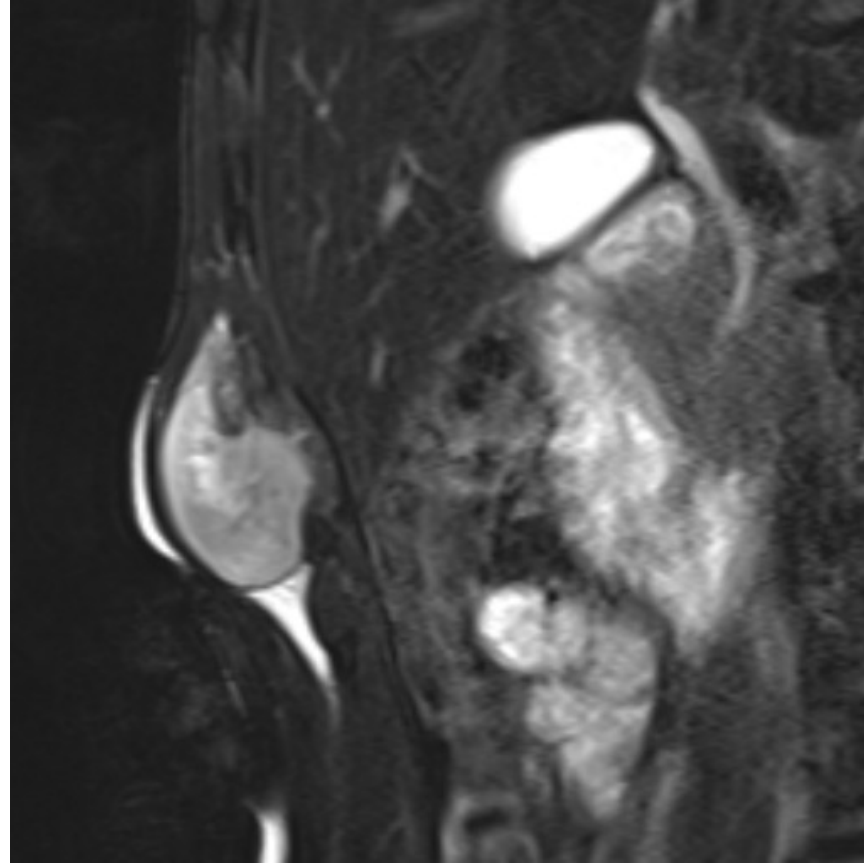


造影後脂肪抑制T1強調画像

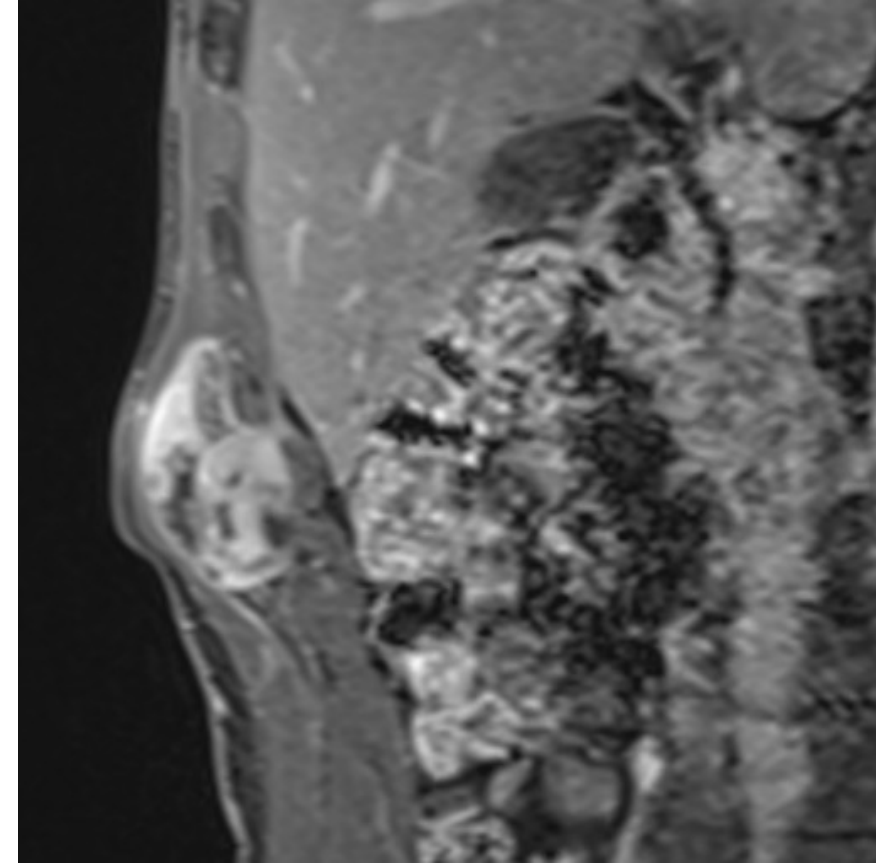
oblique coronal view (病変に直交する斜冠状断像)



T1強調画像



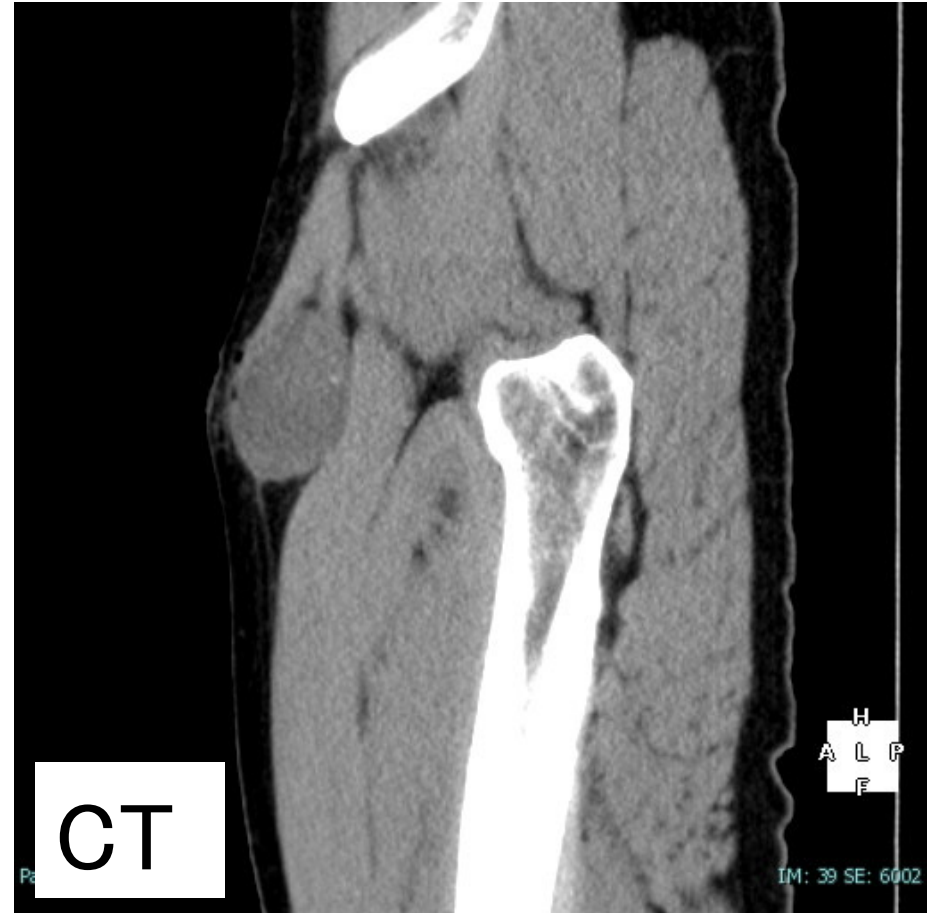
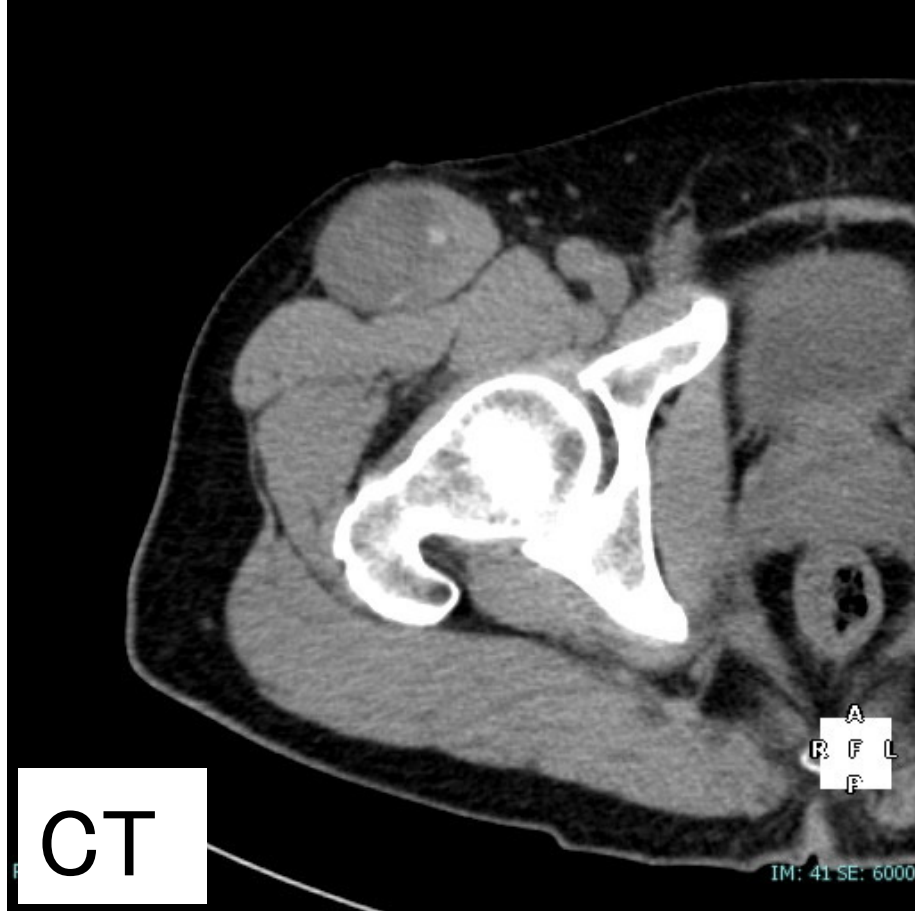
脂肪抑制T2強調画像



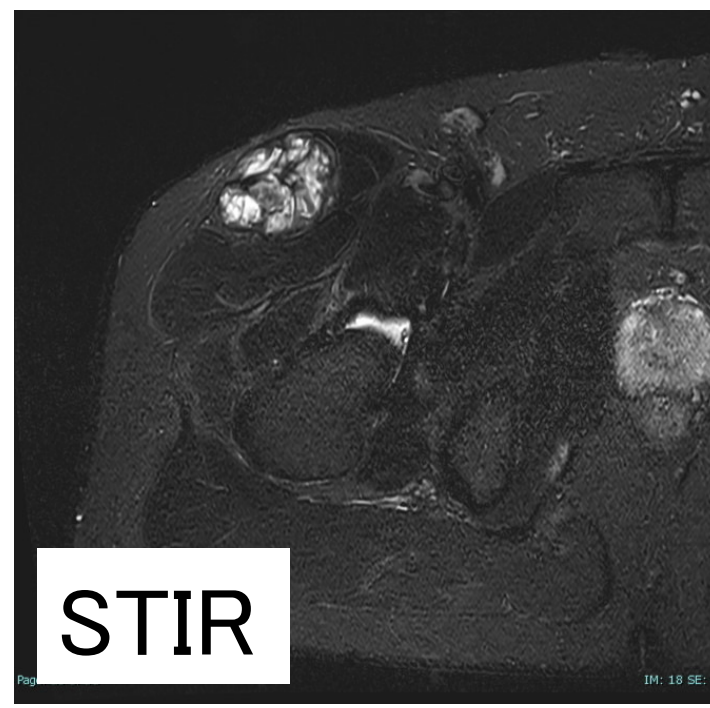
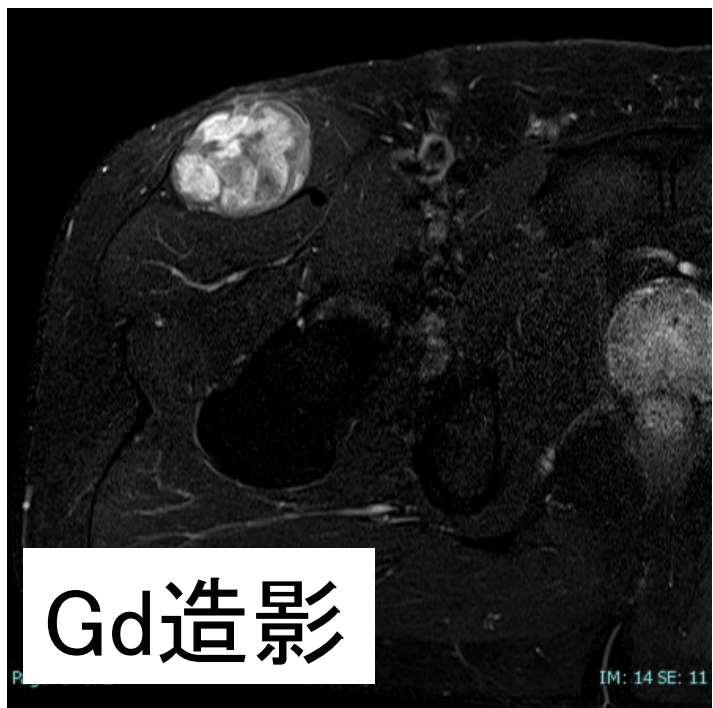
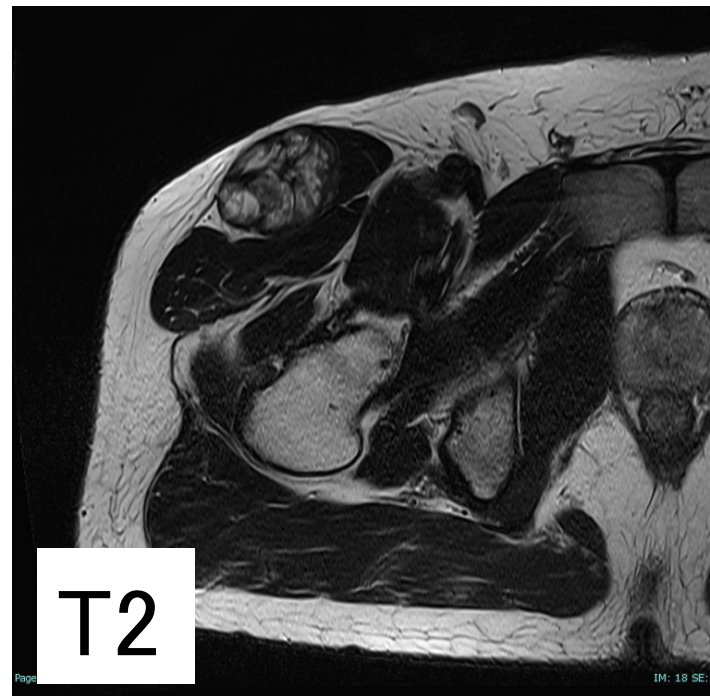
造影後脂肪抑制T1強調画像

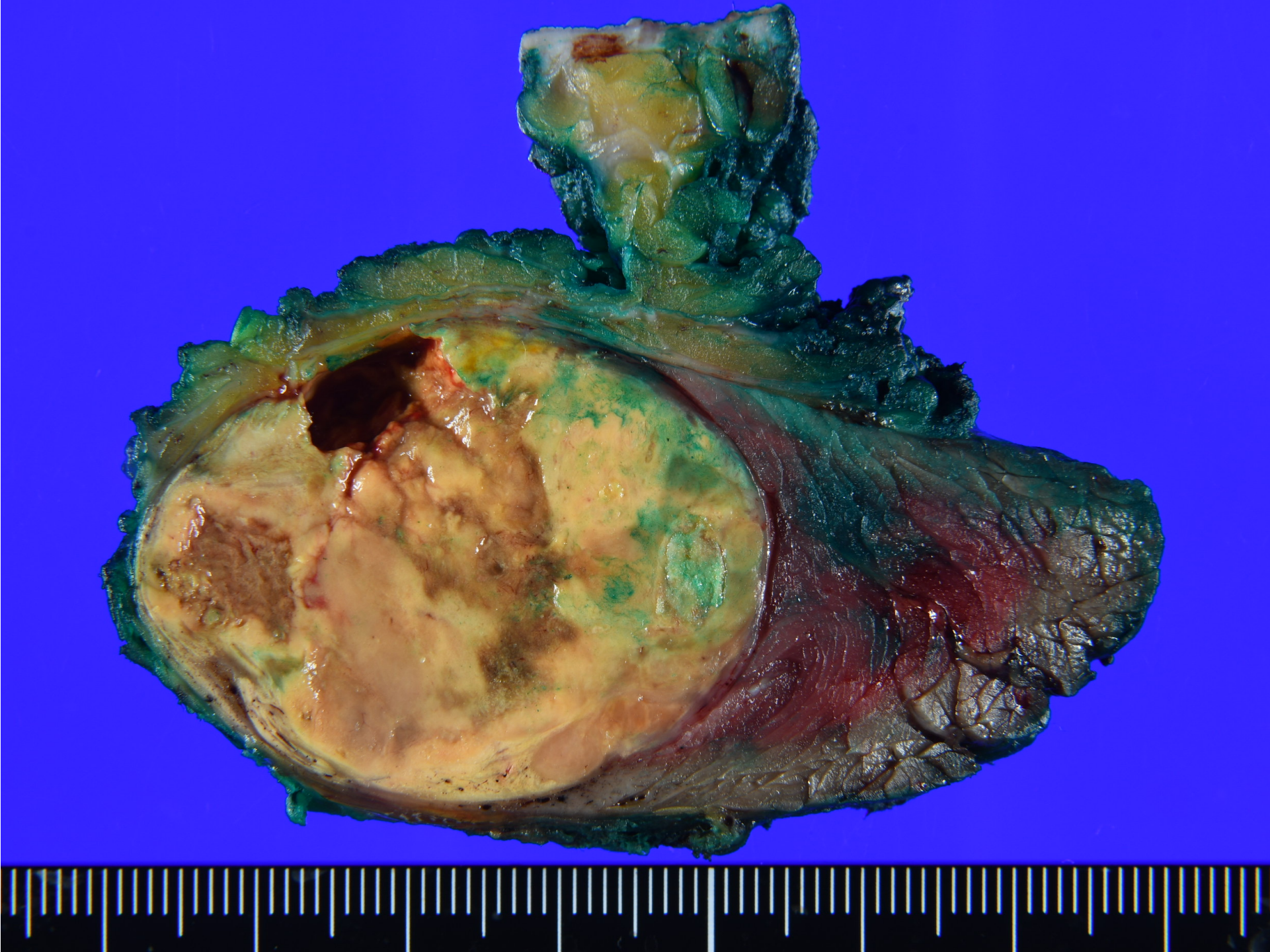


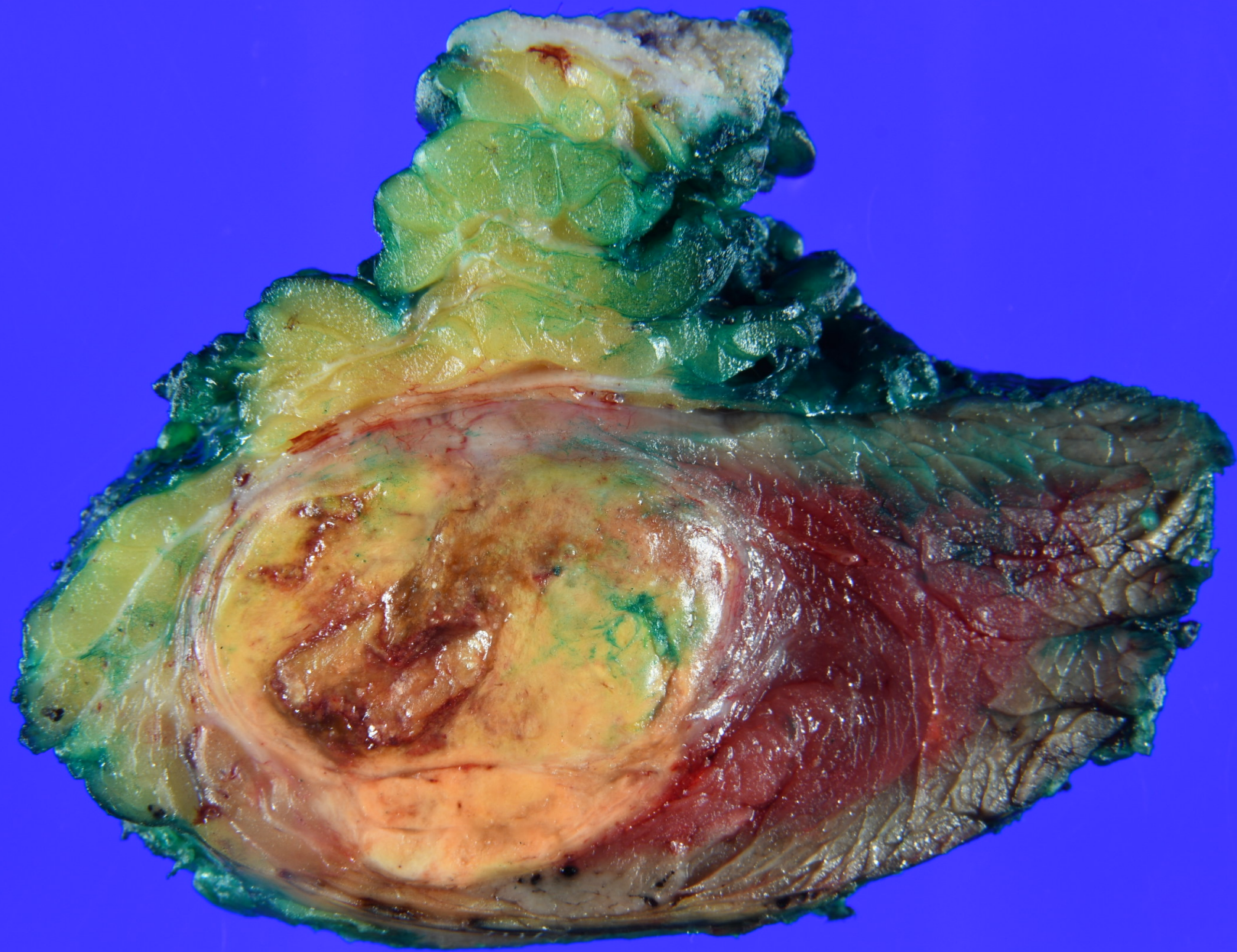
# 演題3 千葉県がんセンター 鼠蹊部腫瘍の一例











# 演題4 埼玉がんセンター 脛骨骨腫瘍

# 初診時

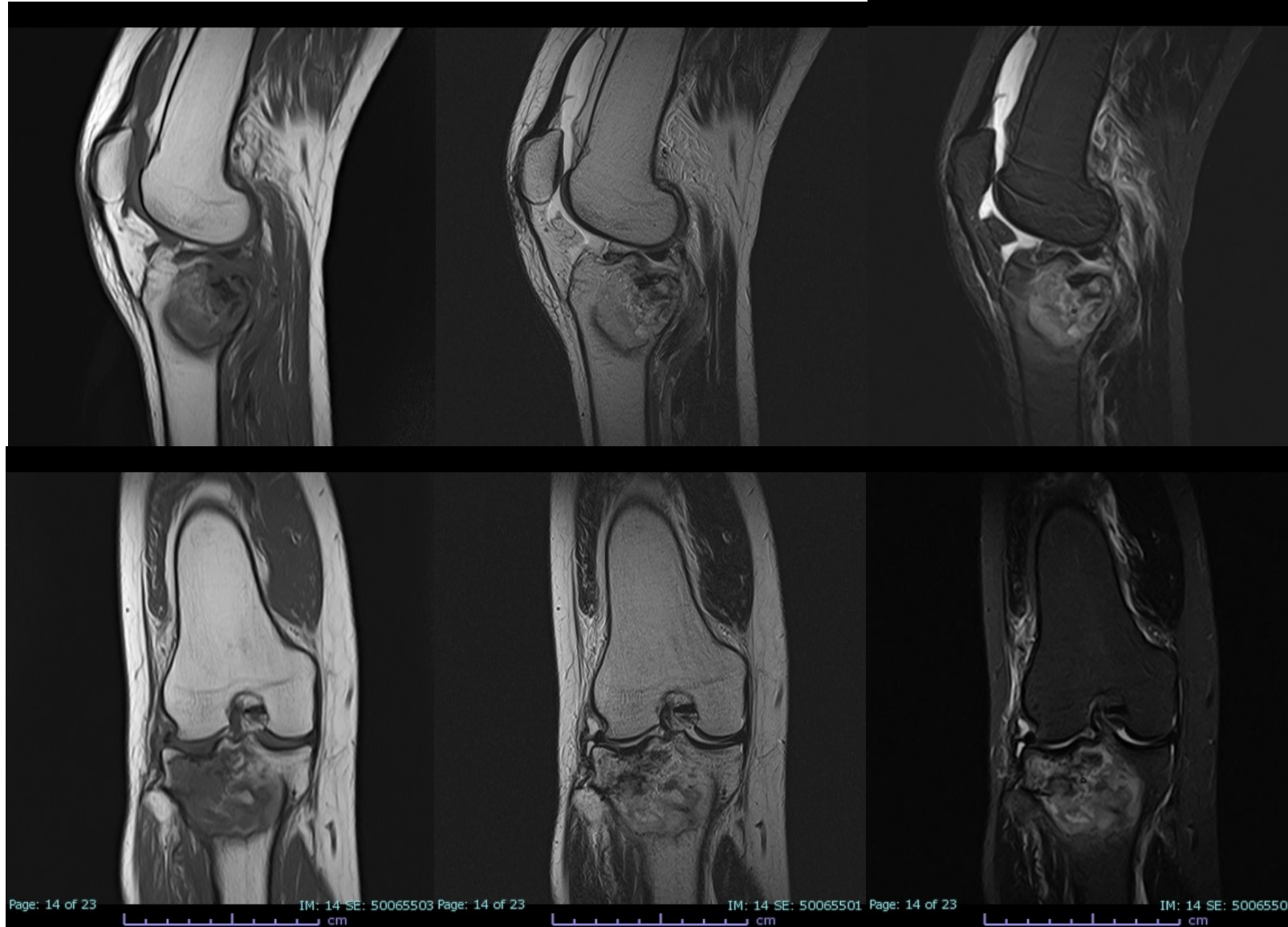


# 初診時

T1WI

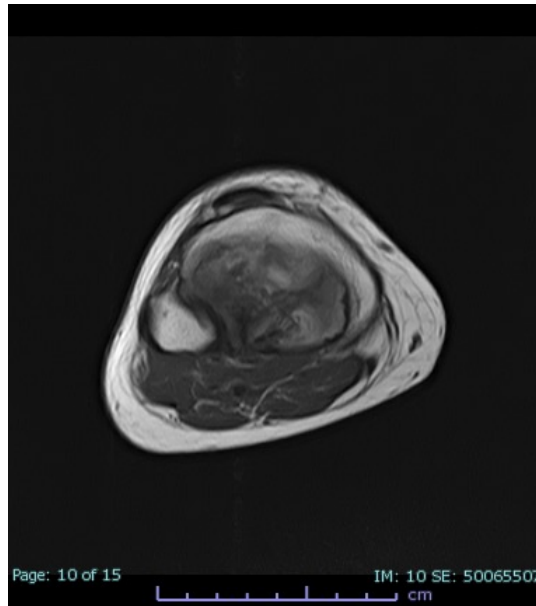
T2WI

STIR

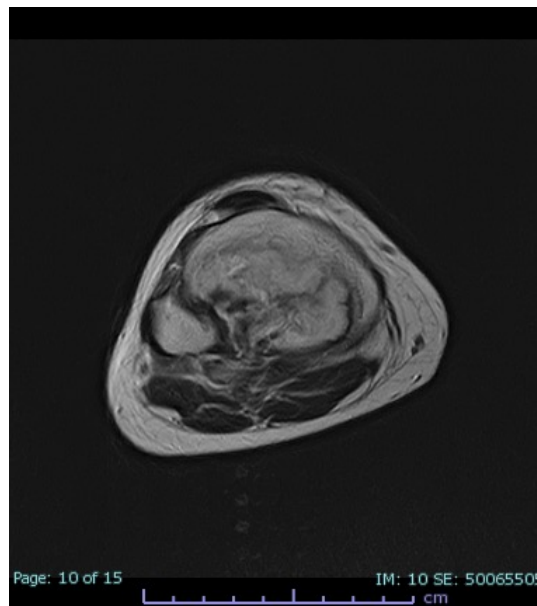


# 初診時

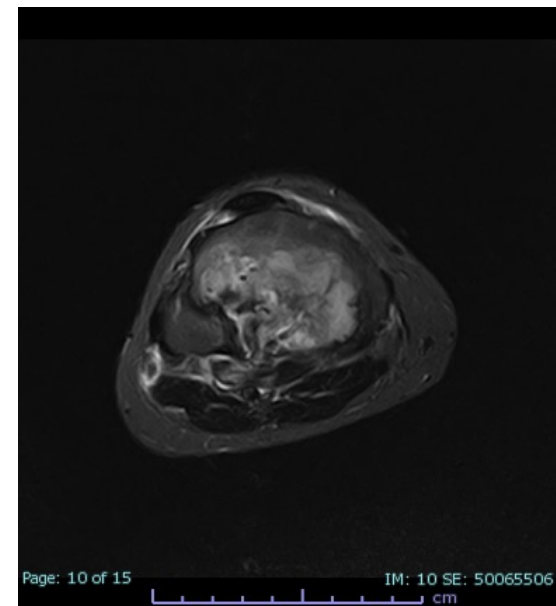
T1WI



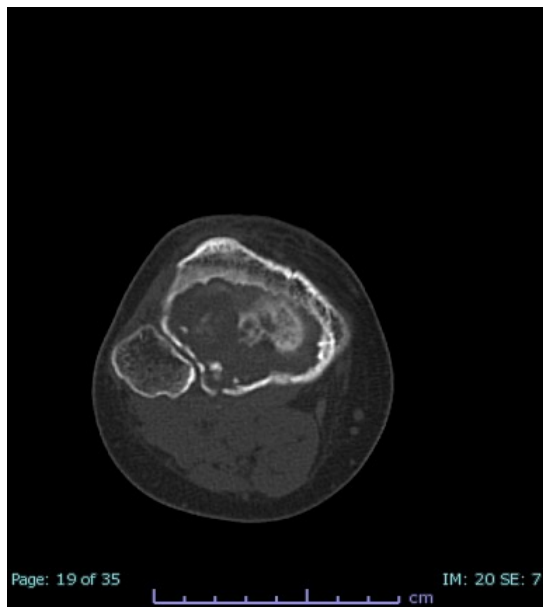
T2WI



STIR



# 初診時

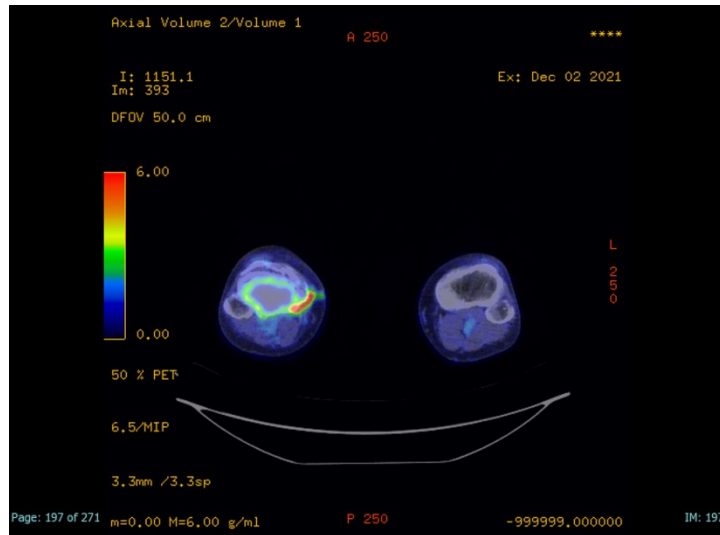
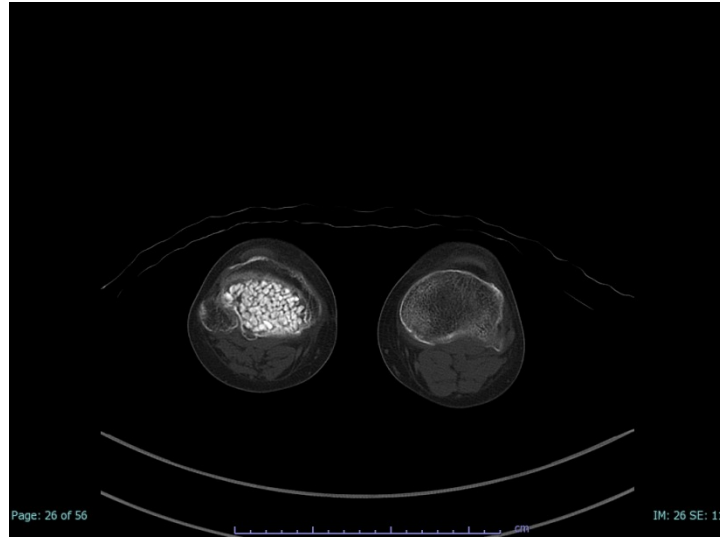




# 搔爬人工骨移植後



# 搔爬・人工骨移植後



# 搔爬・人工骨移植後

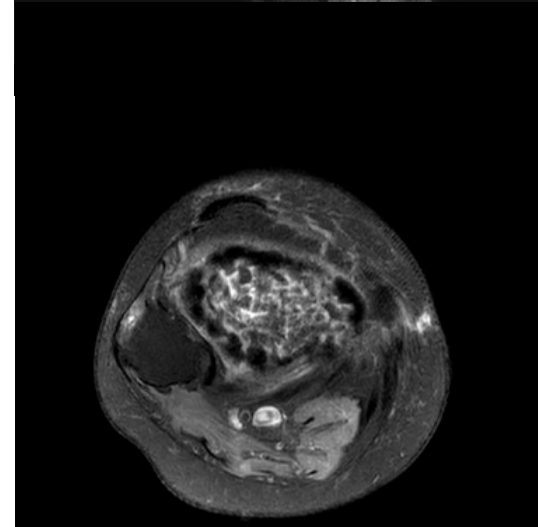
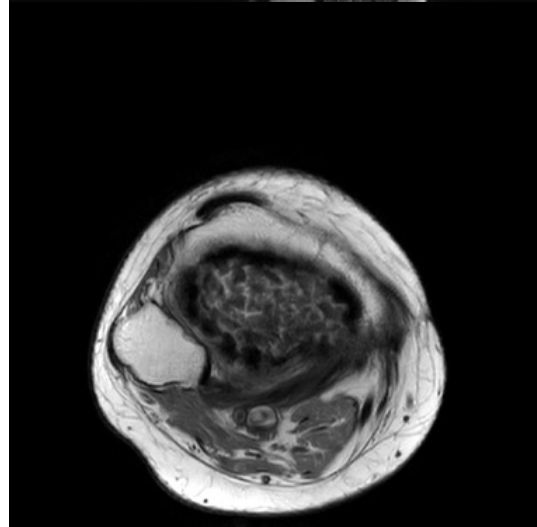
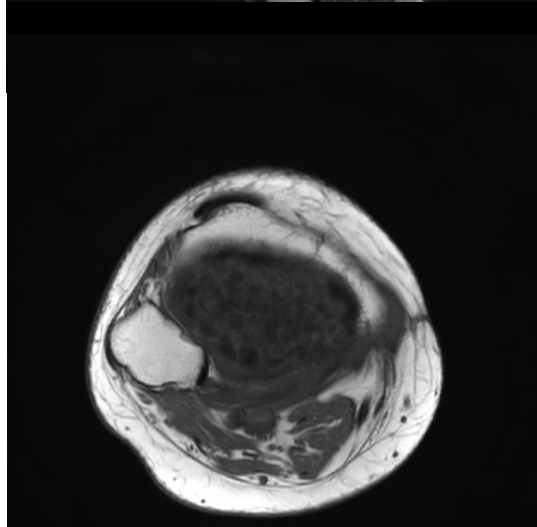
T1WI



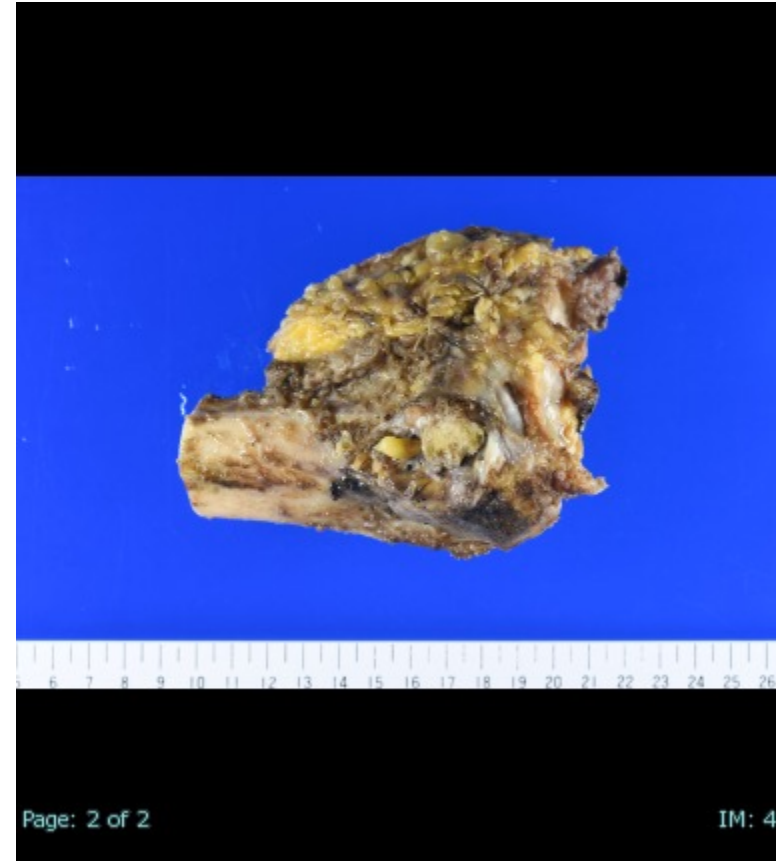
T2WI



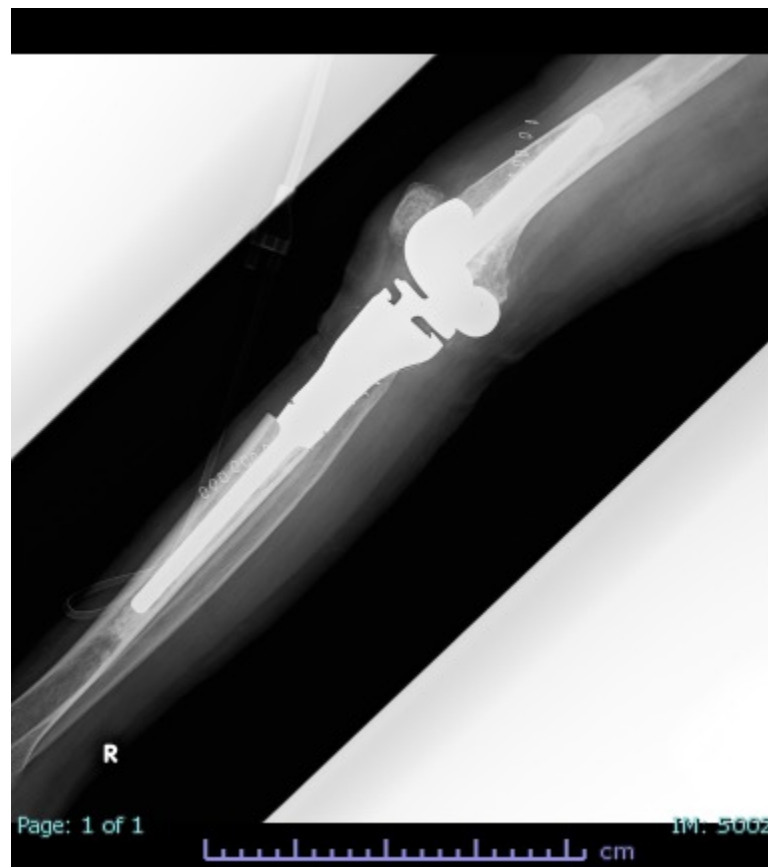
STIR



# 切除材料



# 広範切除、人工膝関節置換術後



# 術後補助化学療法後 多発肺転移

