

# 演題 1 左第5肋骨骨腫瘍

神田浩明、石川文隆、元井紀子、山下享子、町並陸生、本村陸真、  
澤村千草、小柳広高、真鍋淳、五木田茶舞

埼玉県立がんセンター 病理診断科・整形外科、  
がん研究所病理部、河北総合病院

# 症例 18歳男性

**主訴:** 左胸部腫瘍

**現病歴:**

2023/4 胸部レントゲンで異常指摘され近医を受診、CTで後縦隔腫瘍と診断される

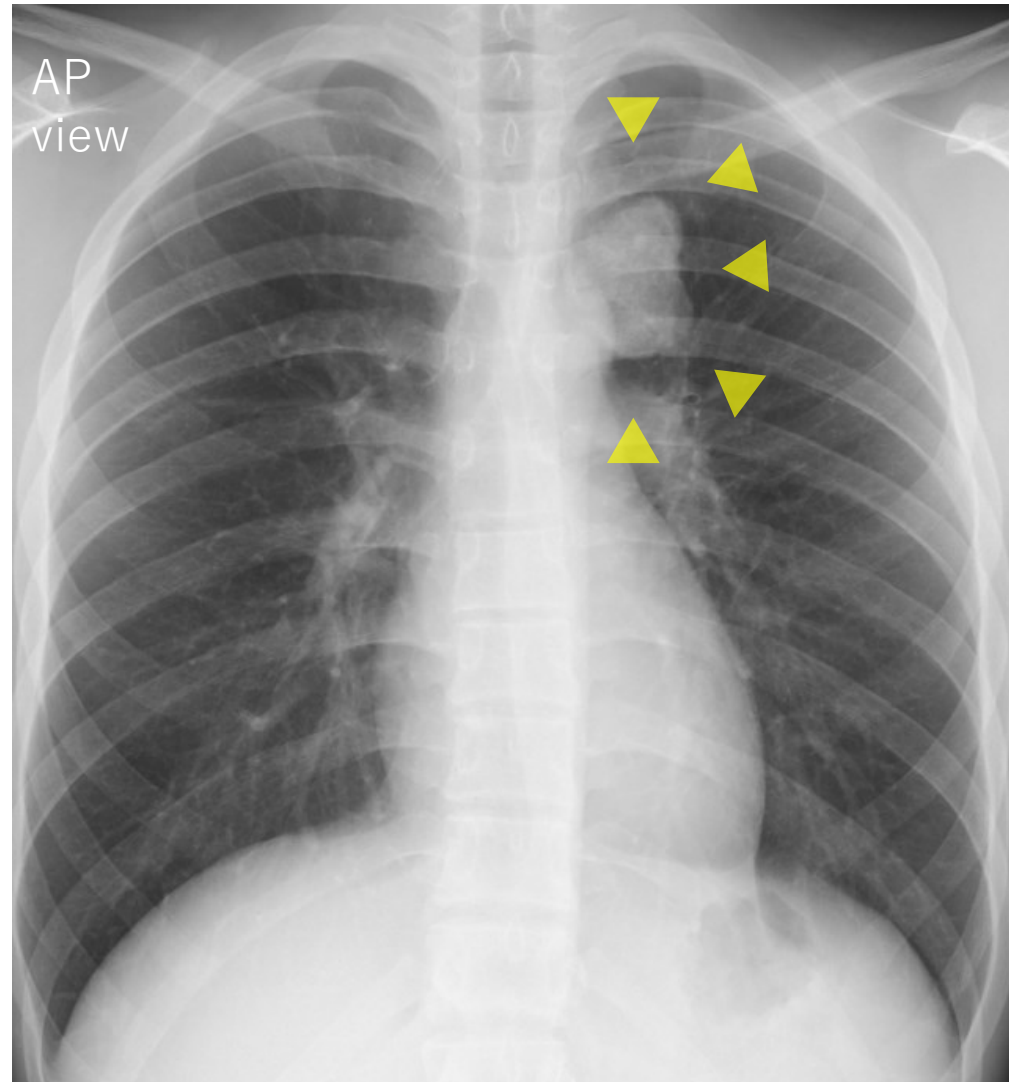
2023/5 前医を受診、第5肋骨から連続する骨化を伴う腫瘍を認め、画像診断上は隆起性内軟骨腫を疑われる。生検未施行。

2023/7 精査目的に当院紹介受診。

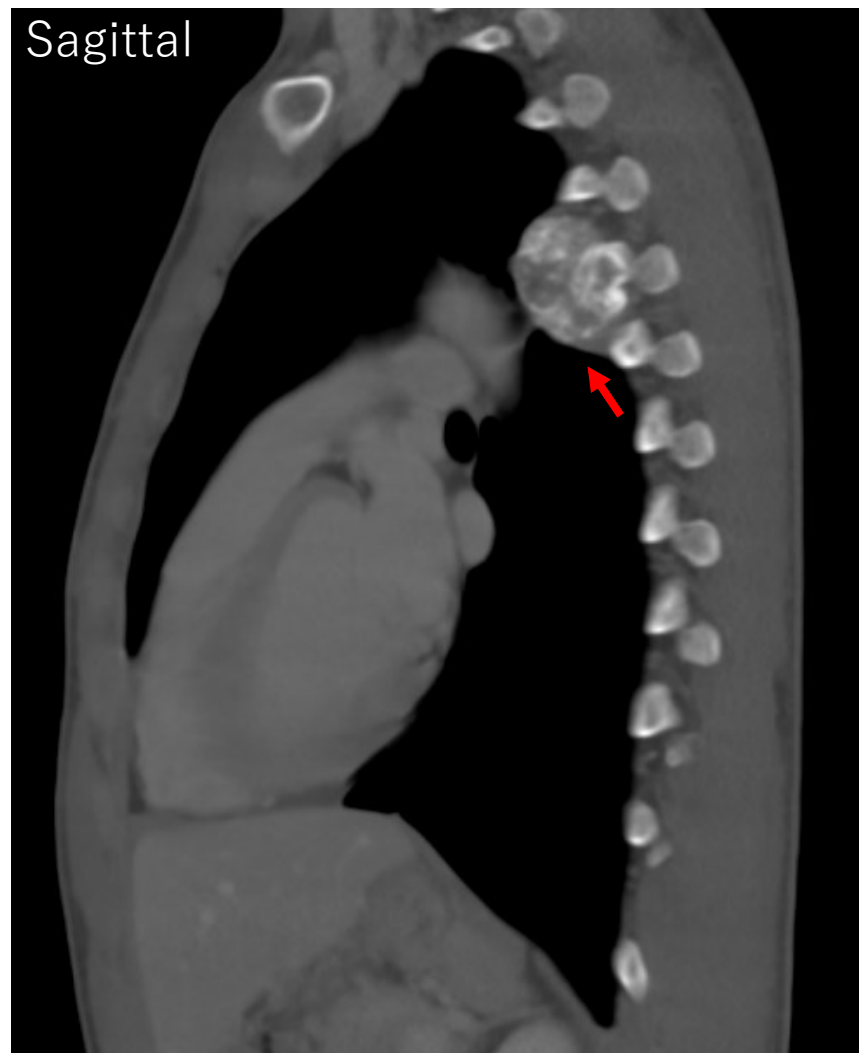
**既往歴:** なし

**家族歴:** なし

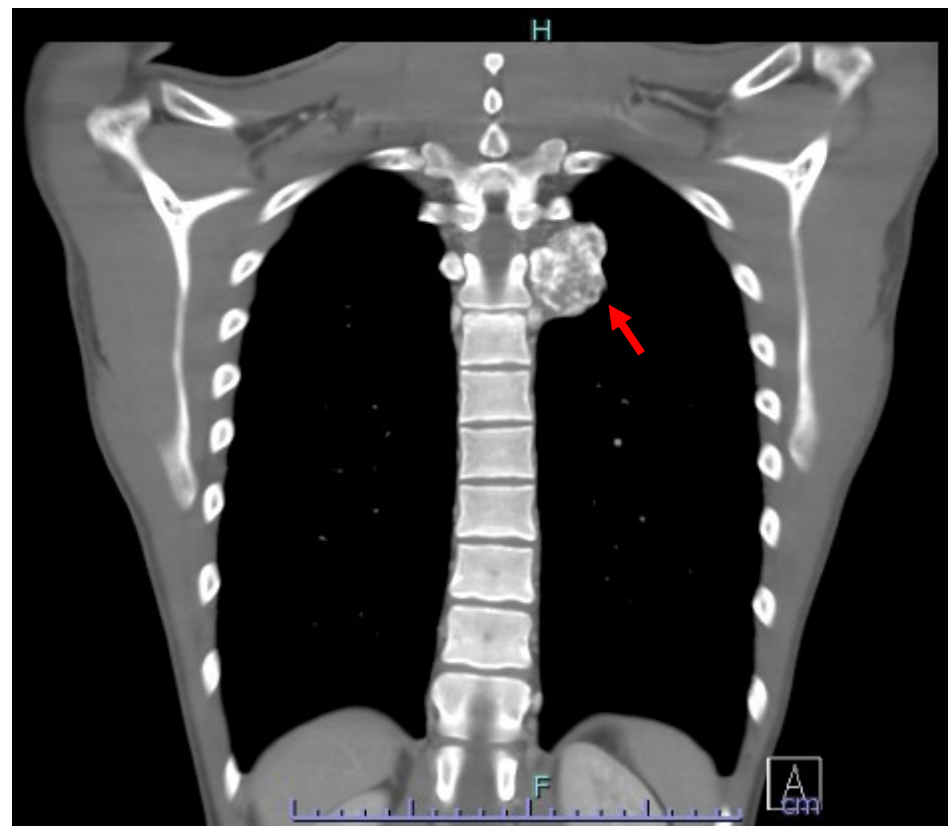
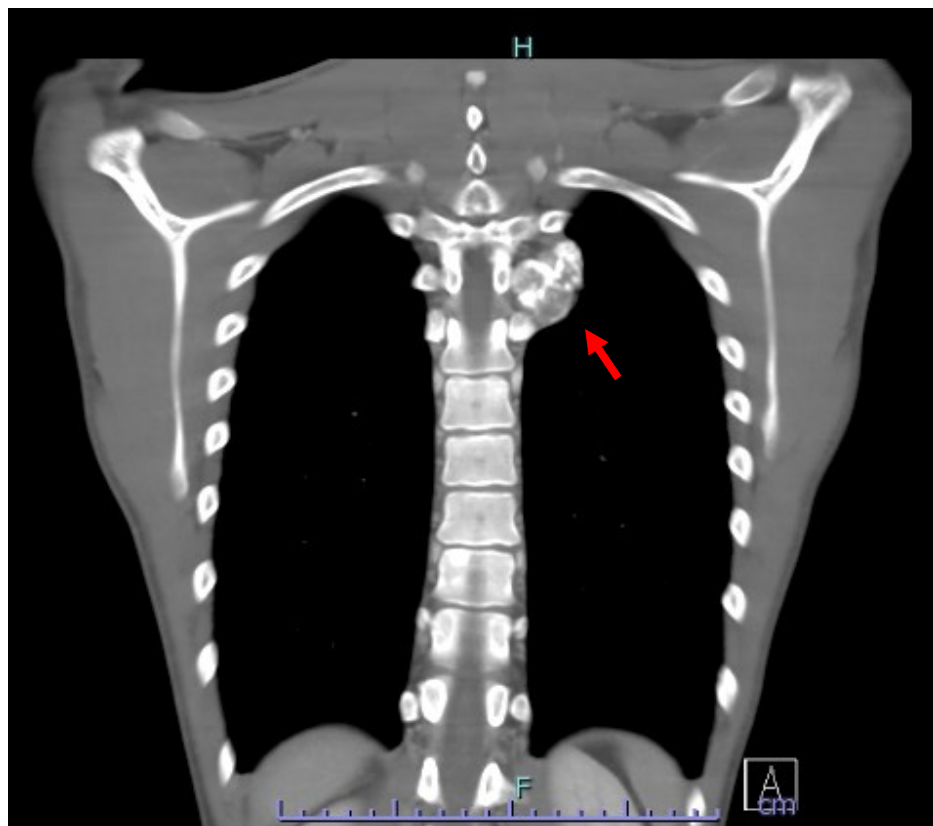
# 画像所見 (X-p)



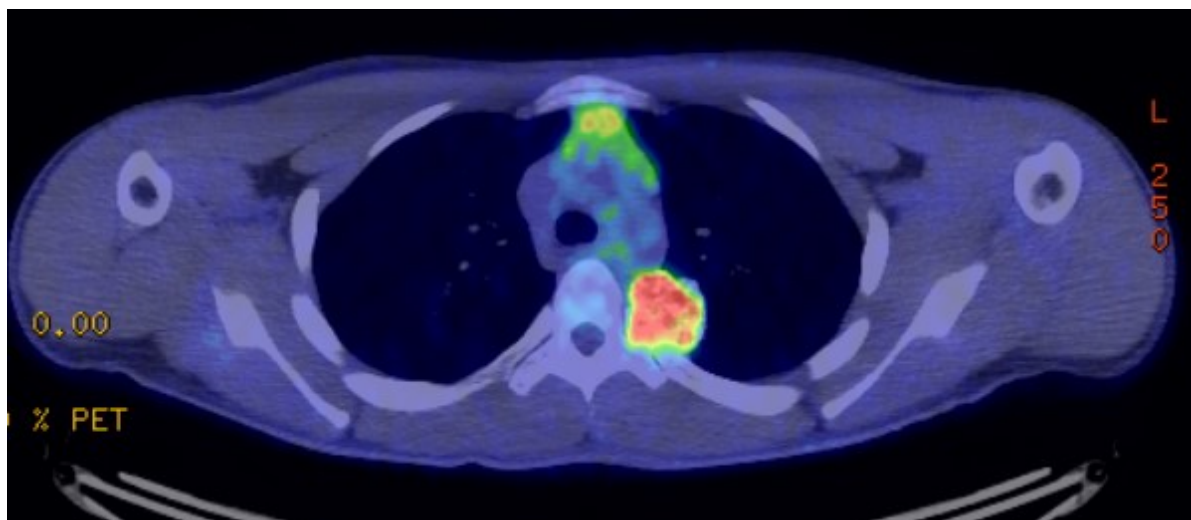
# 画像所見 (CT)



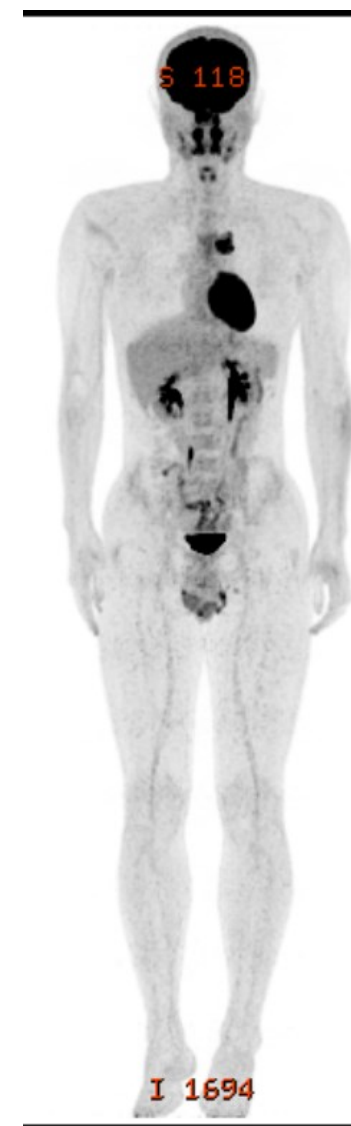
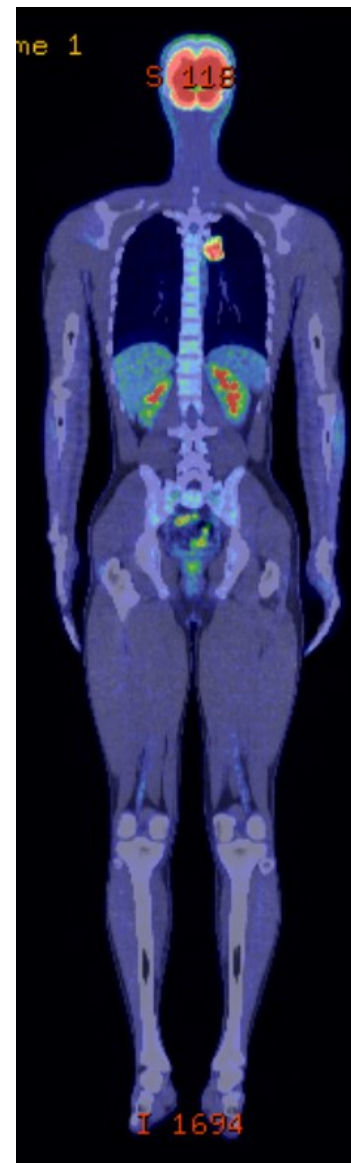
# 画像所見 (CT coronal)



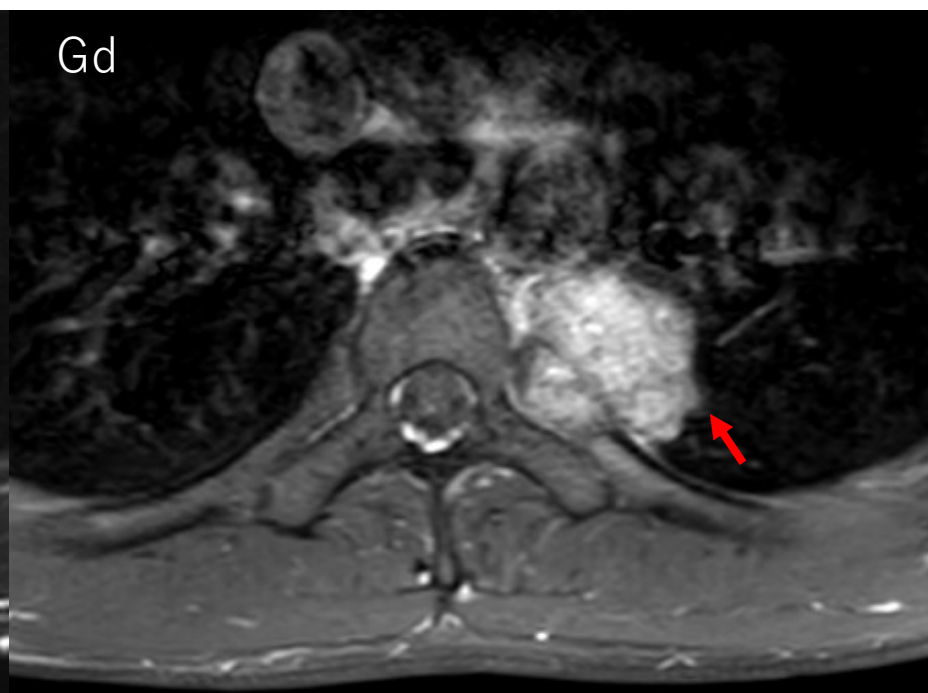
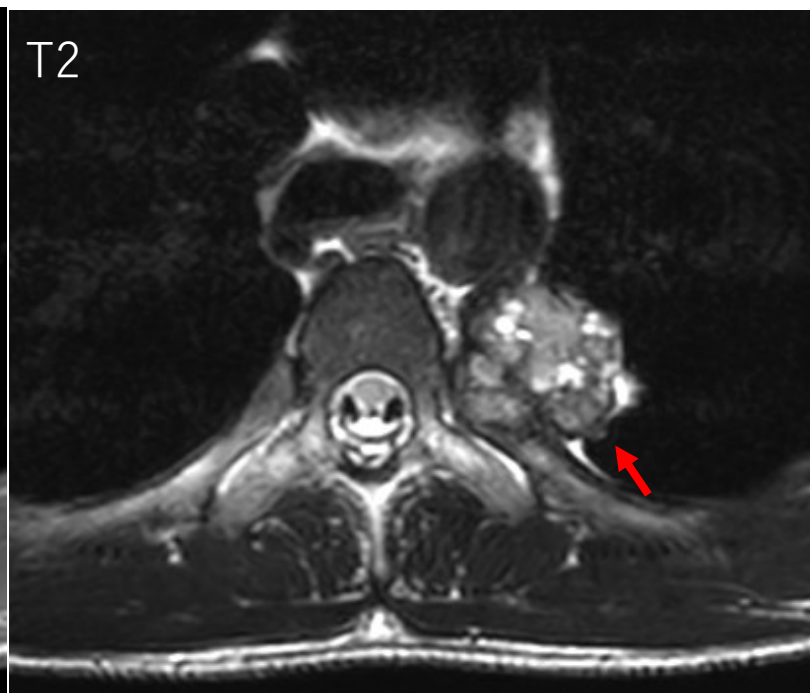
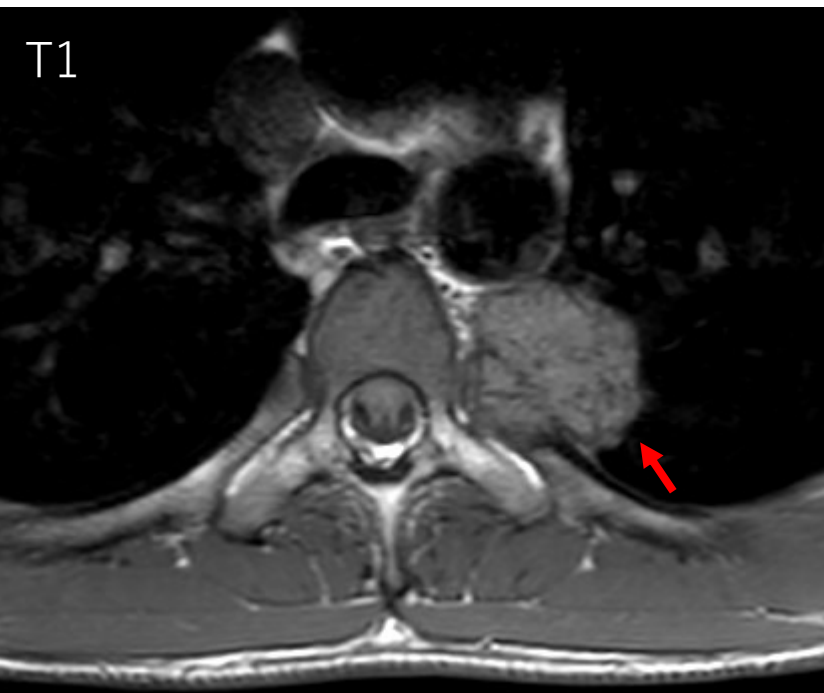
# 画像所見 (PET-CT)



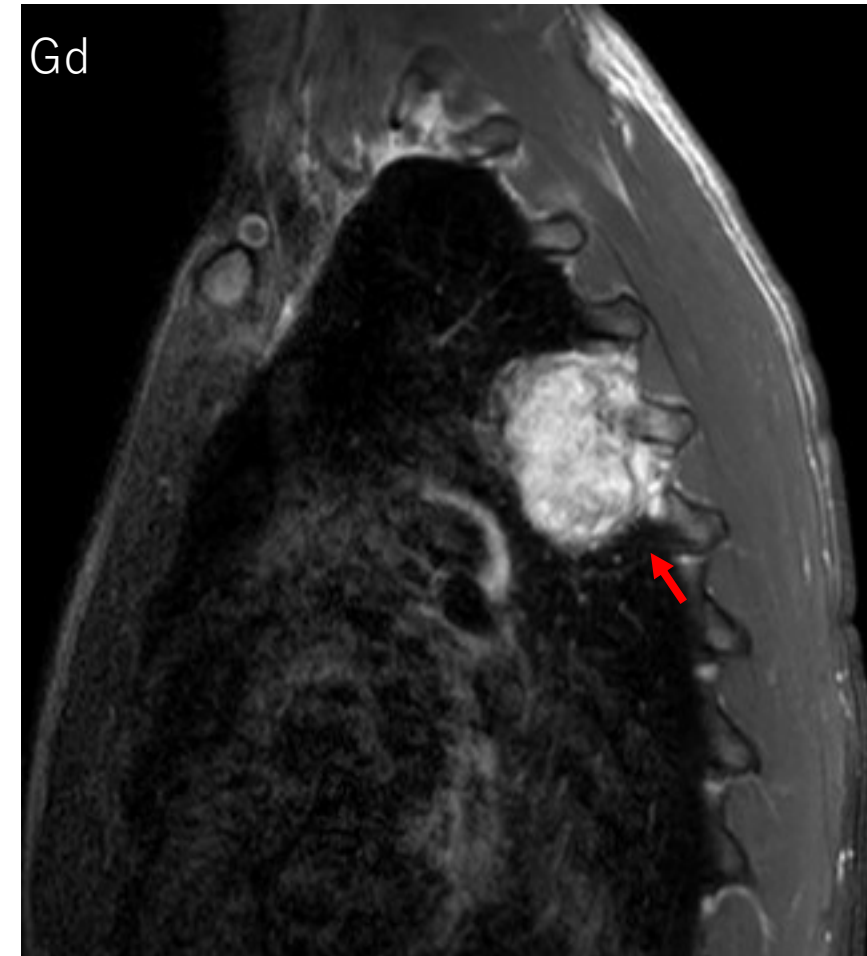
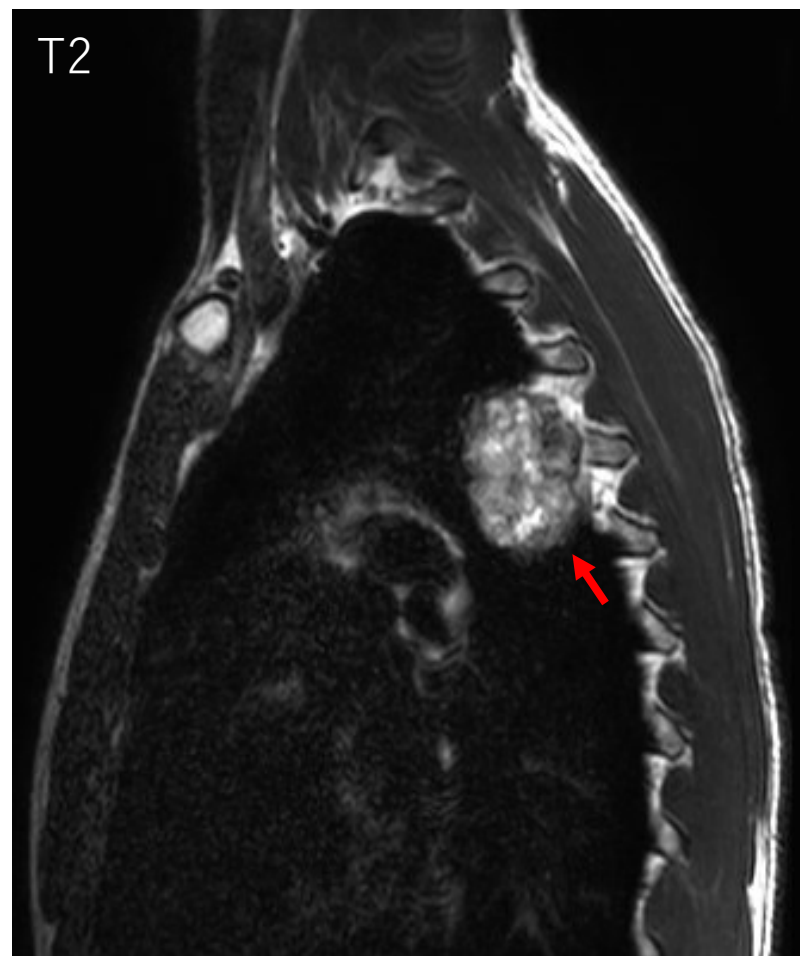
SUVmax = 11.30



# 画像所見 (MRI axial)



# 画像所見 (MRI sagittal)



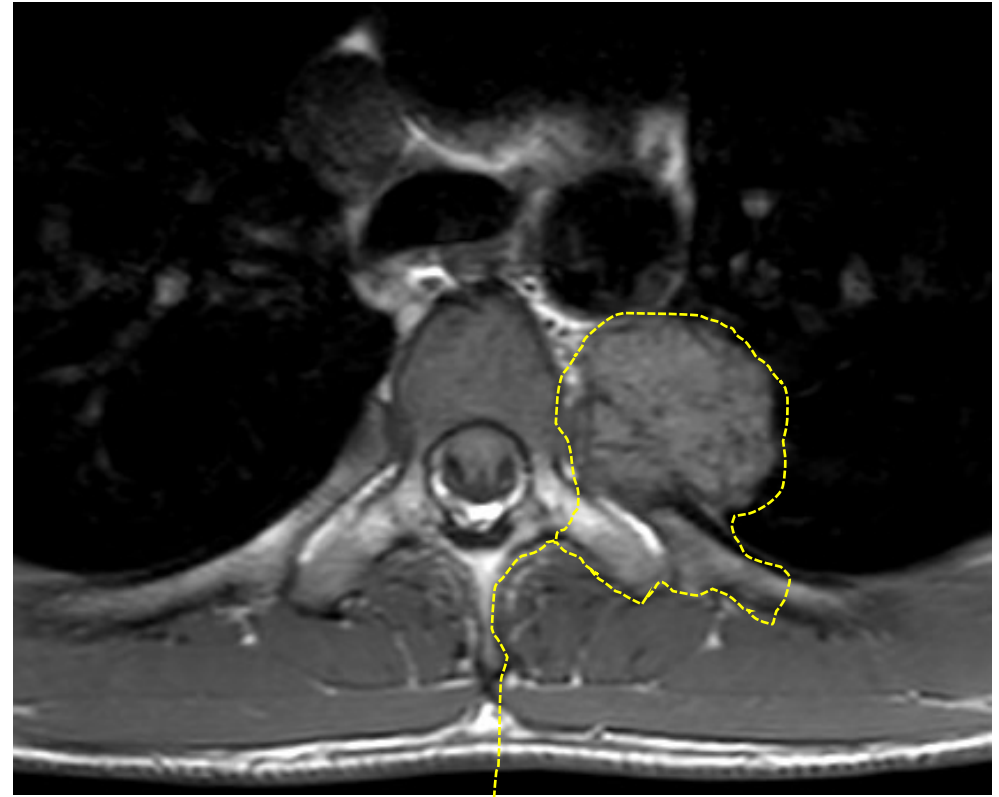


# 術前診断

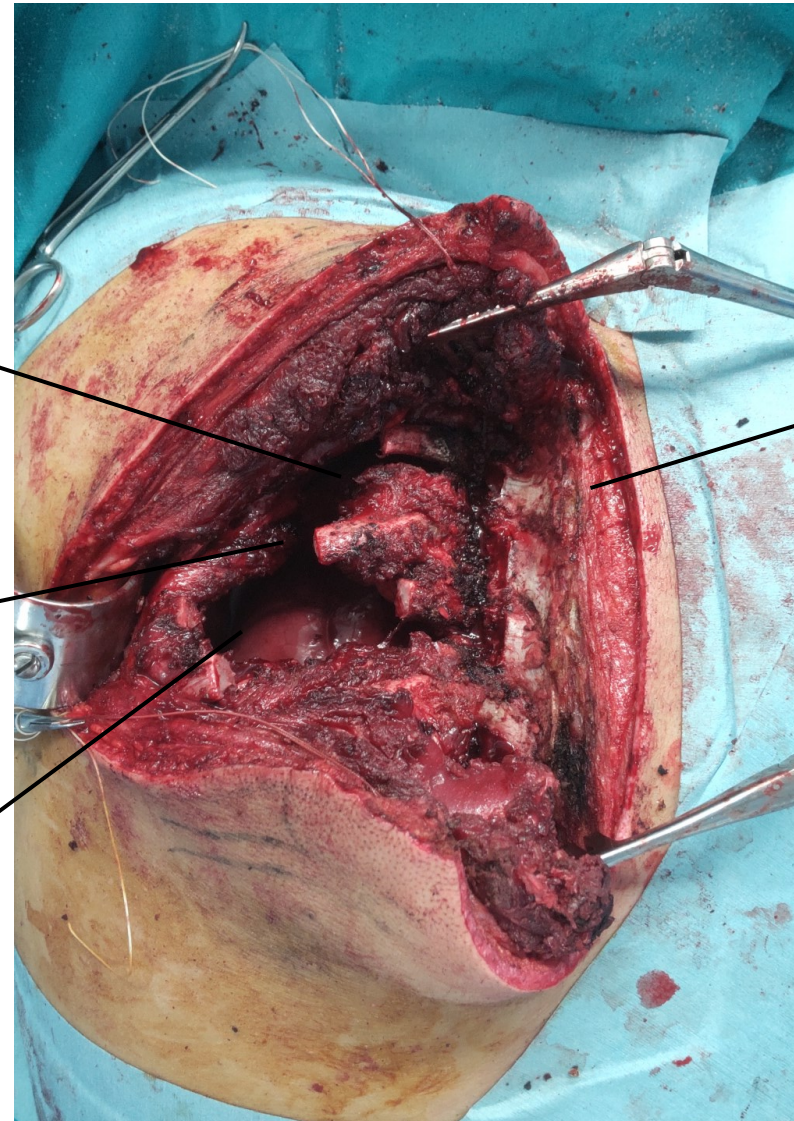
- 骨軟骨腫
- 軟骨肉腫
- 骨肉腫

# 手術計画

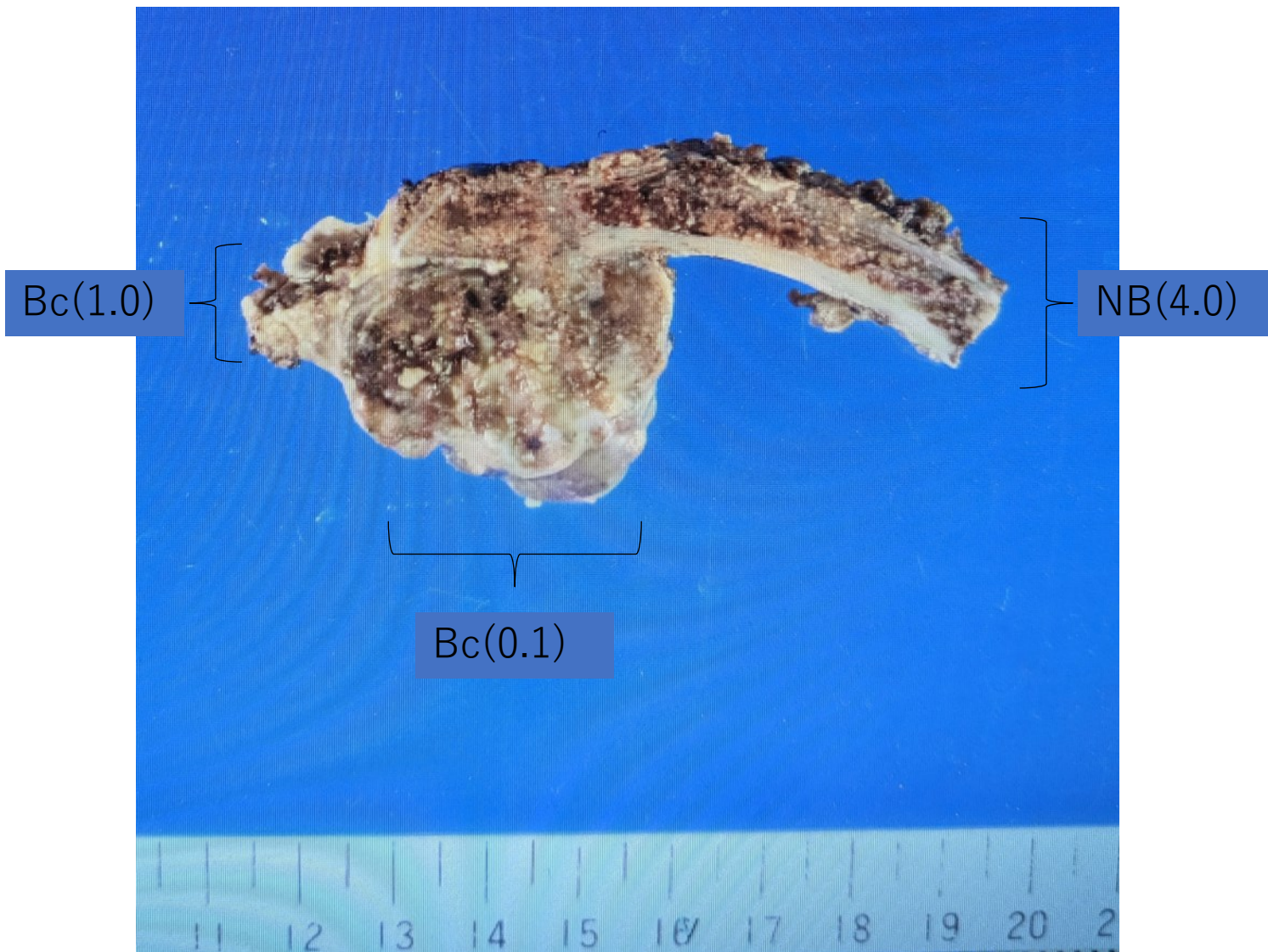
- 1) 腫瘍広範切除W(1)
- 2) 胸壁再建



# 手術所見



# マージン評価



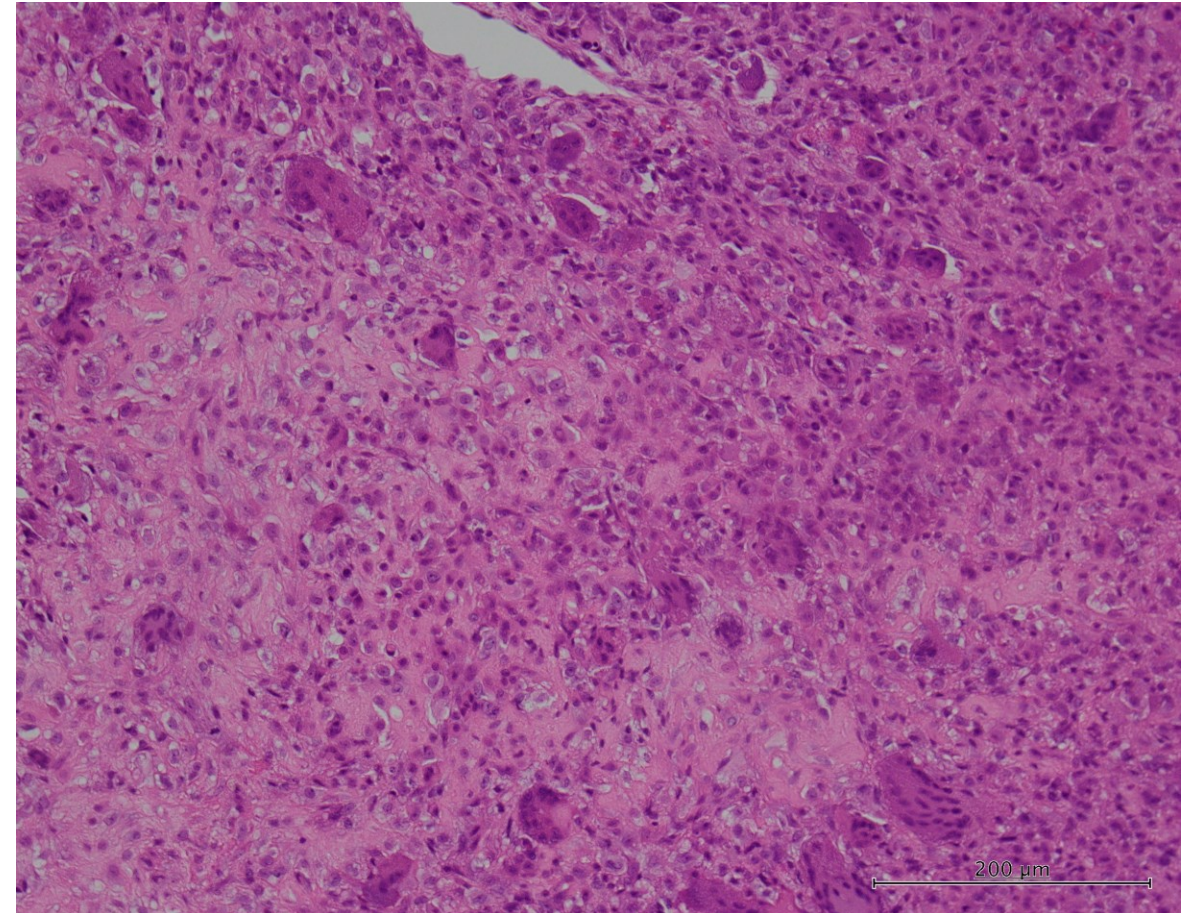
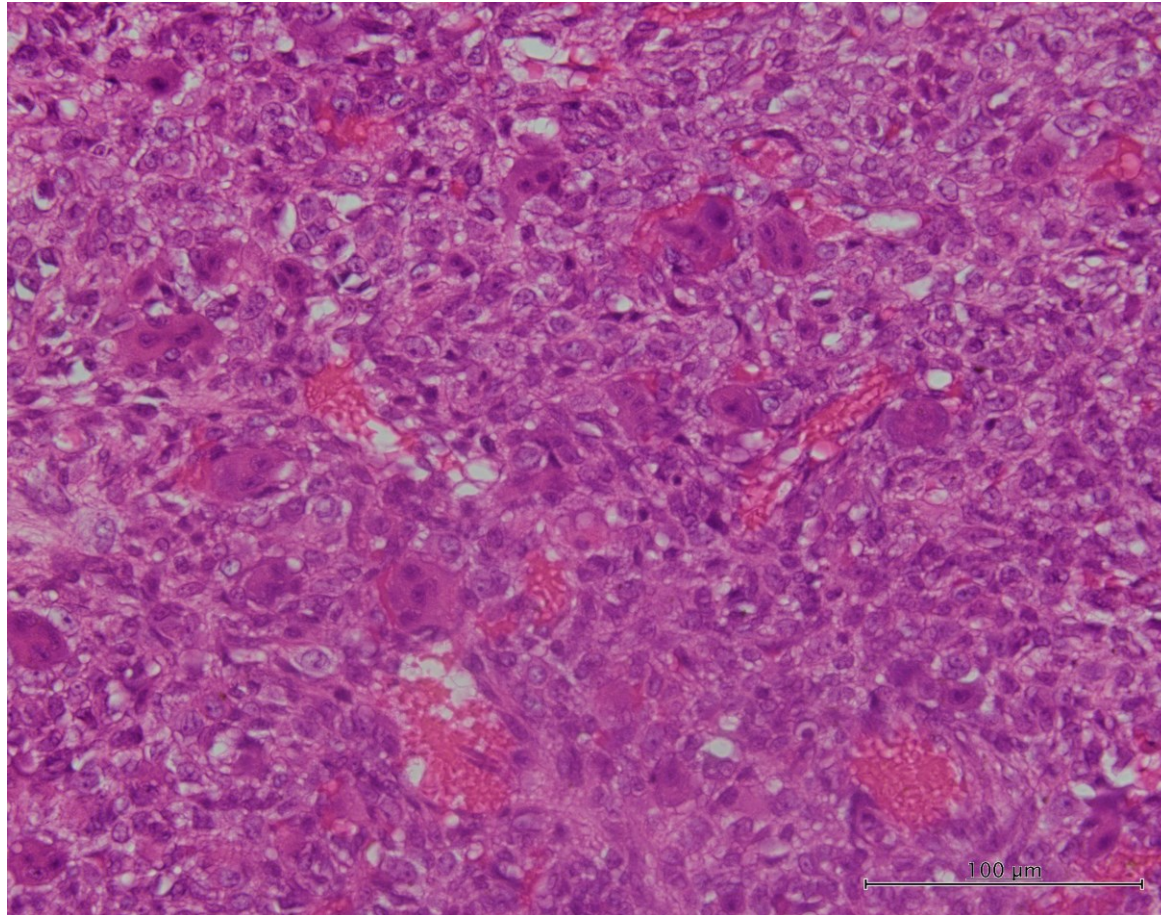
病理学的評価は断端陰性

# 提出標本 #4



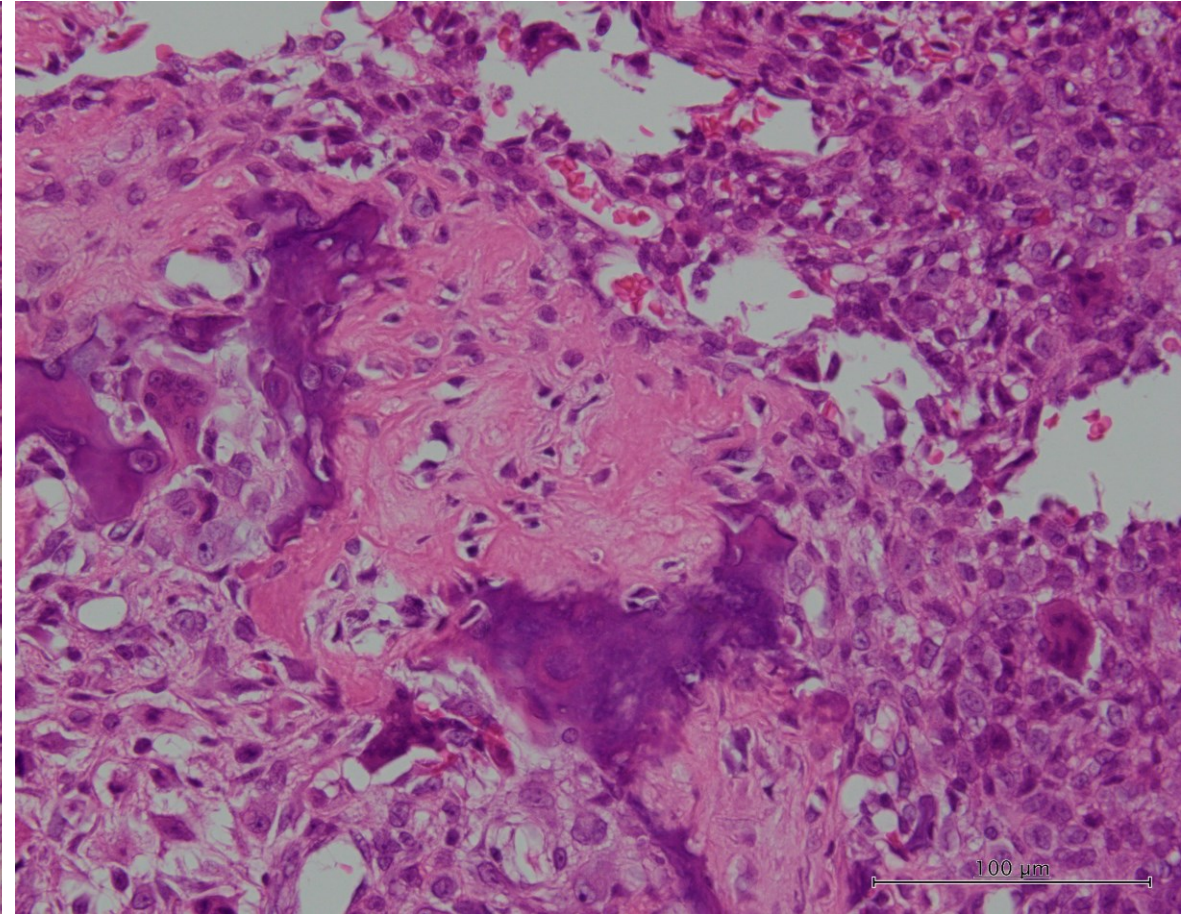
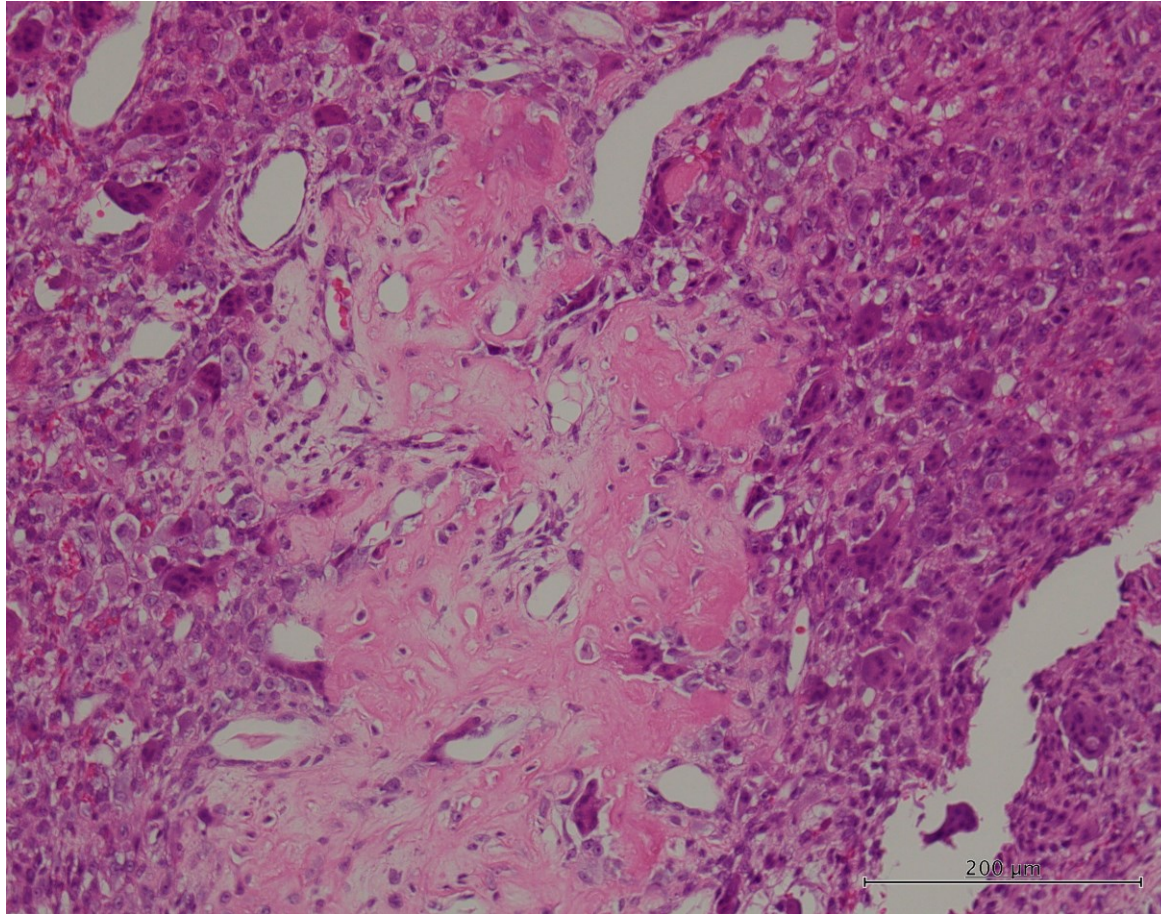
免疫染色：非脱灰サンプリングサンプル

# 提出組織



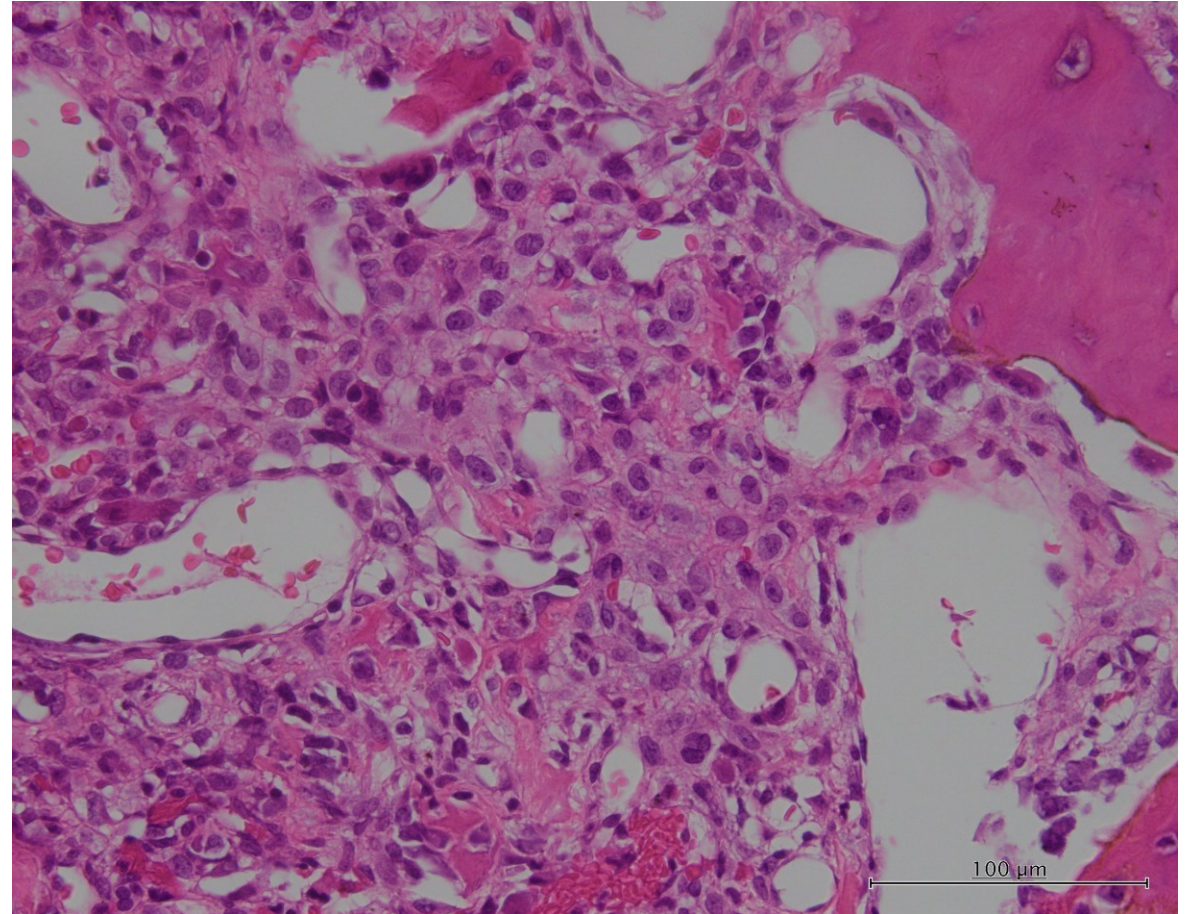
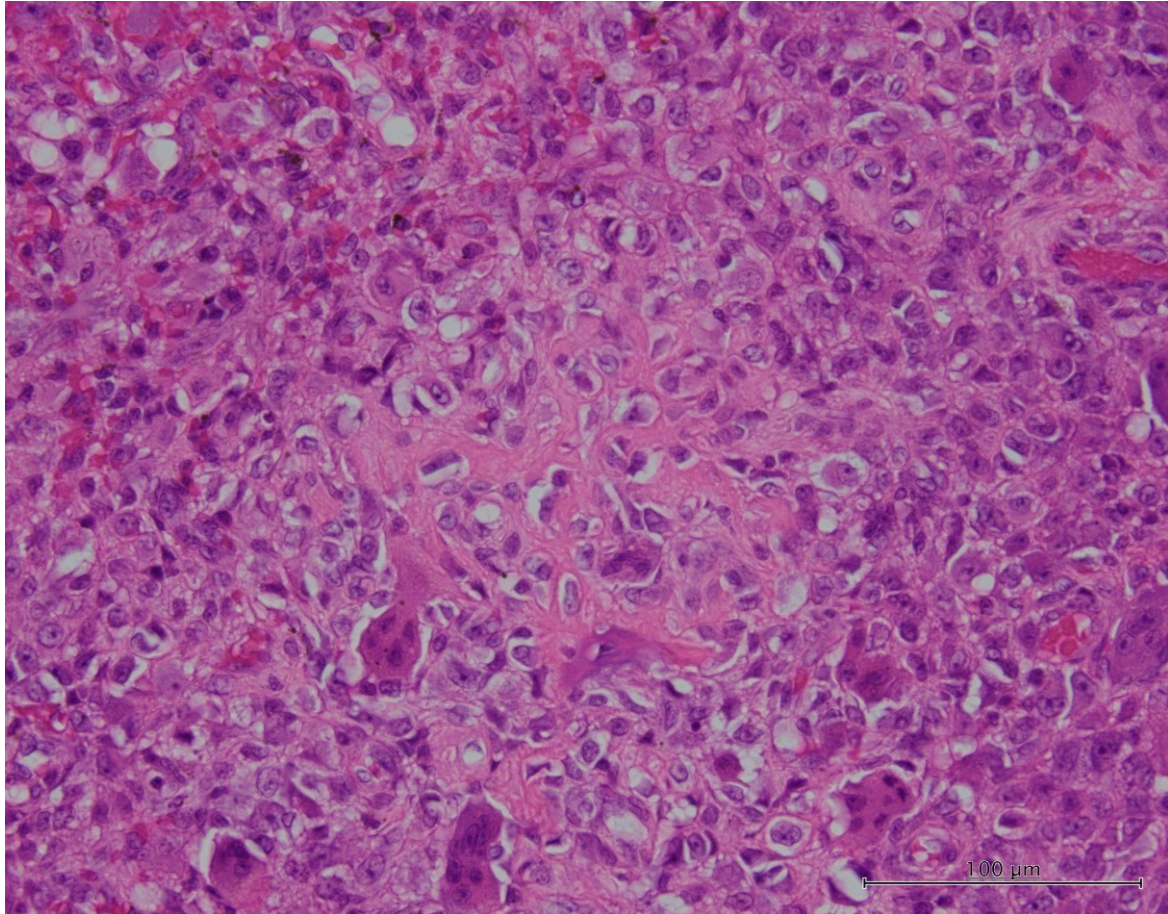
破骨細胞型巨細胞とともに単核細胞が認められる。軟骨様基質が認められ、軟骨芽細胞腫を当初疑った。

# 提出組織



軟骨内骨化が認められる

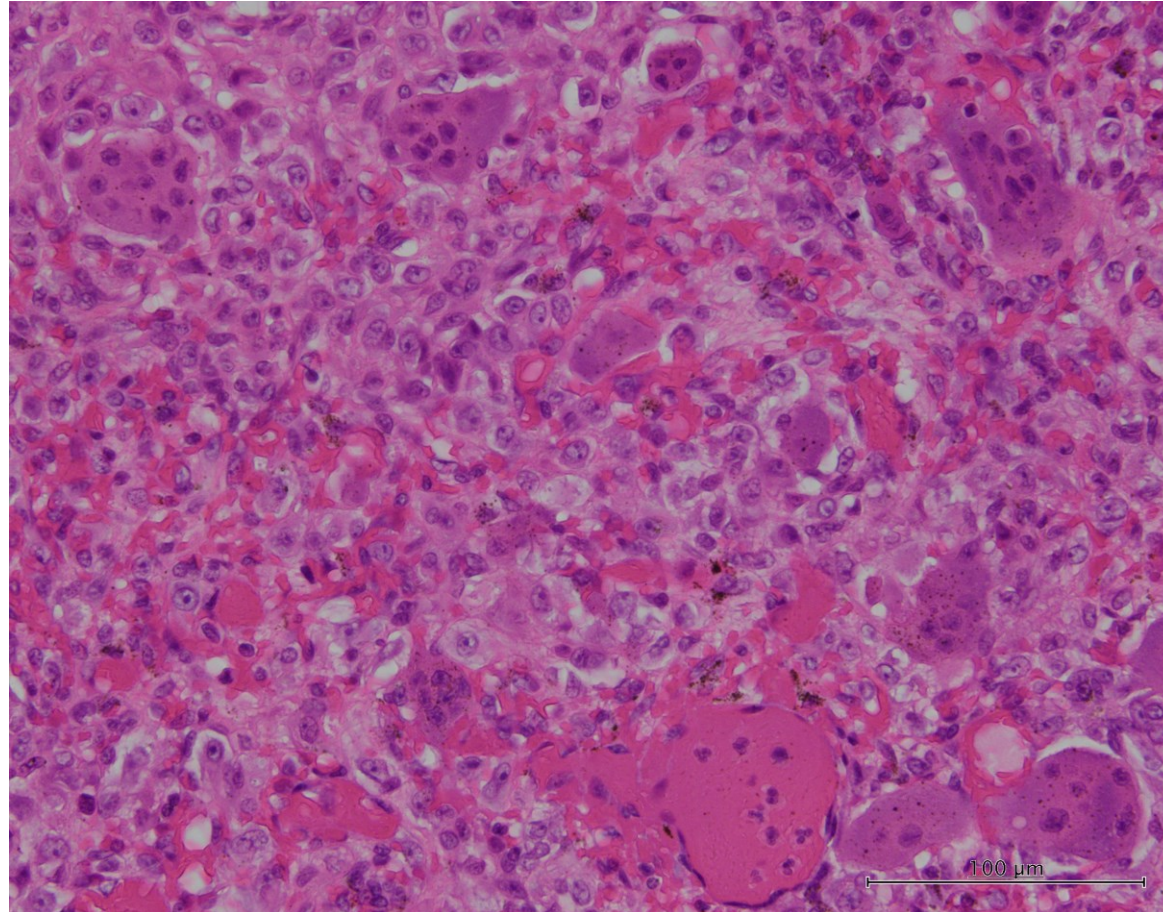
# 提出組織



類骨形成がうかがわれる



# 提出組織



単核細胞にやや核腫大を示す部分がある

# 免疫染色結果

S100 部分陽性、 SOX9 部分陽性、 H3.3 G34W 陰性、 H3.3 G34V 陰性、 H3.3 K36M 陰性、 SATB2 陽性、 CD56 部分陽性、 MDM2 陰性 CDK4 陰性 p16 陽性 p53 弱陽性 AE1/AE3 陰性、 EMA 陰性、 D2-40 陽性、 CD68 単核細胞に陰性、 ki-67 LI 約20%

# 分子生物学的解析

ホルマリン固定パラフィン包埋標本からDNAを抽出し、PCR-サンガーシーケンス法でH3F3A H3F3B遺伝子 Codon 34-36周辺を解析したが、いずれも点突然変異は認められなかった。

USP6 Break apart FISH 陰性

MDM2 FISH 増幅無し

# 問題点

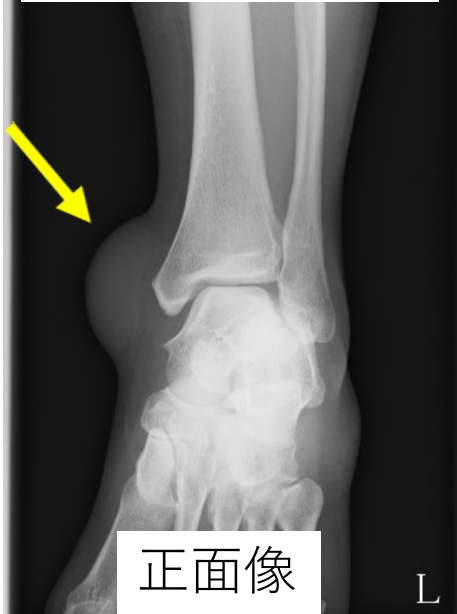
- 病理診断

# 演題 2

## 左足関節軟部腫瘍

静岡がんセンター

前医単純X線像



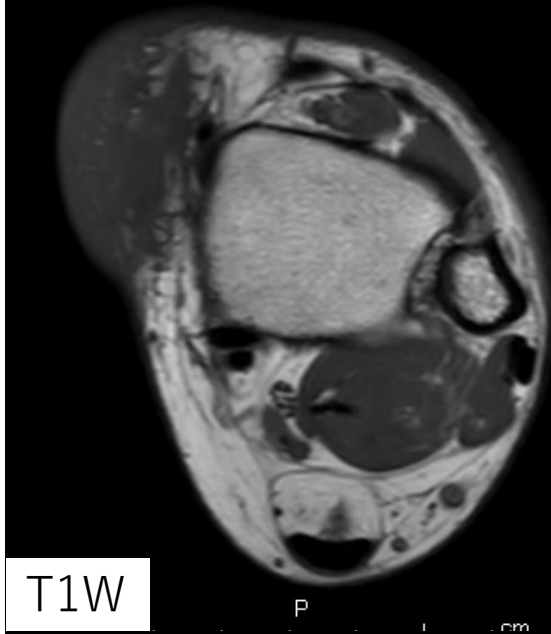
正面像

L



側面像

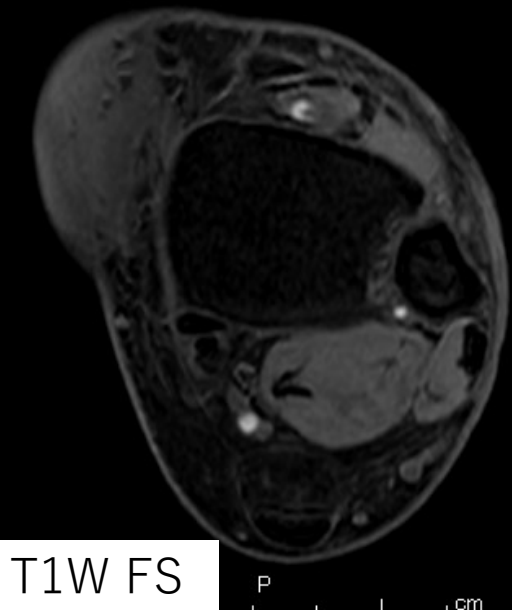
L



T1W

P

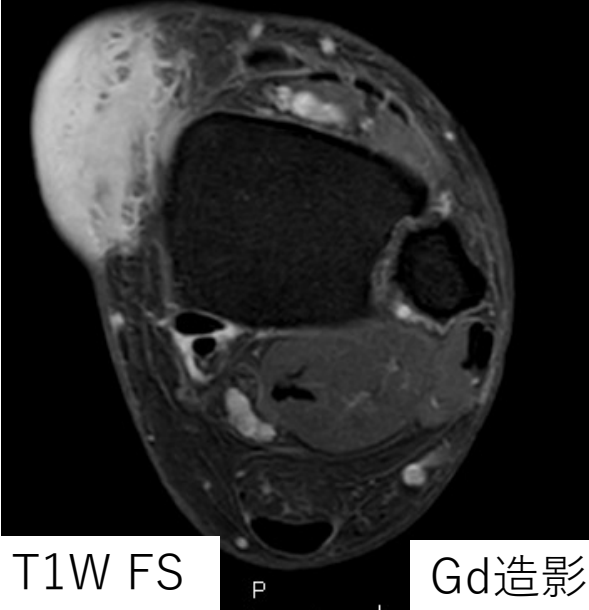
cm



T1W FS

P

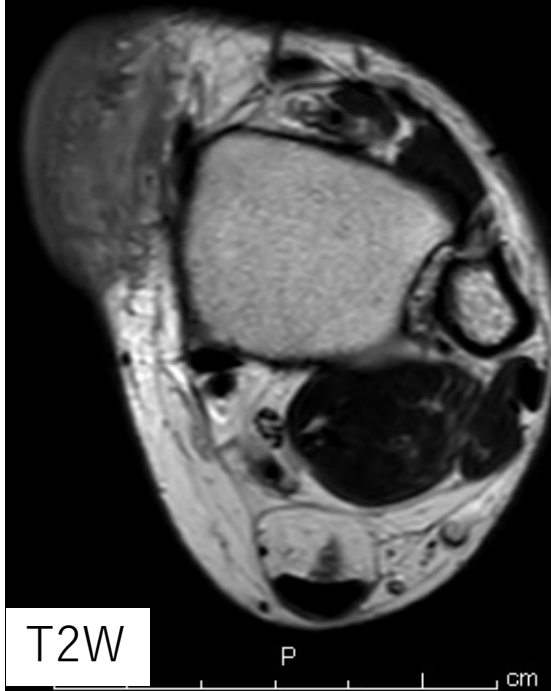
cm



T1W FS

P

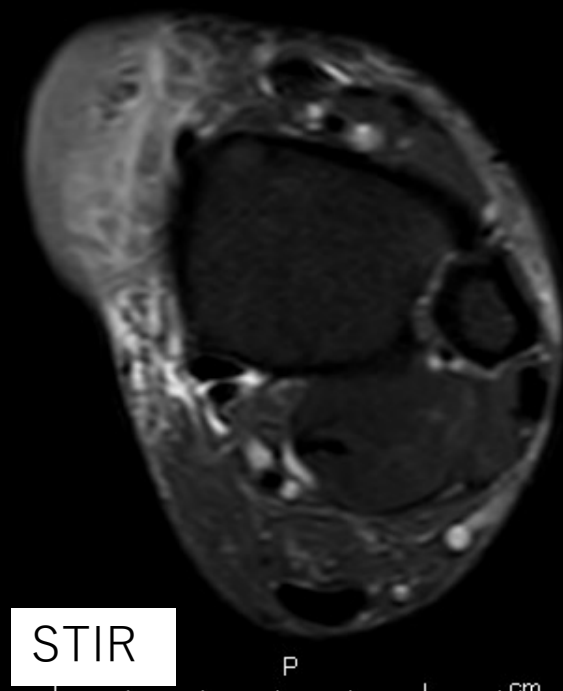
Gd造影



T2W

P

cm

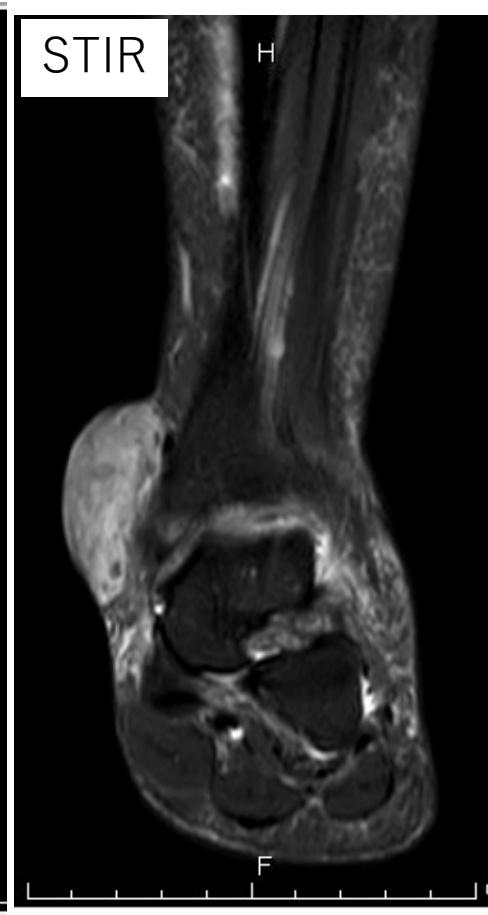
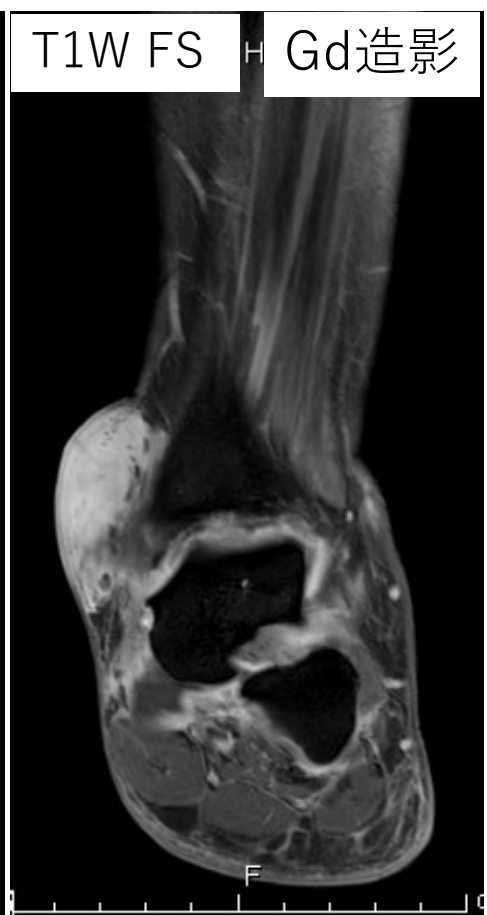
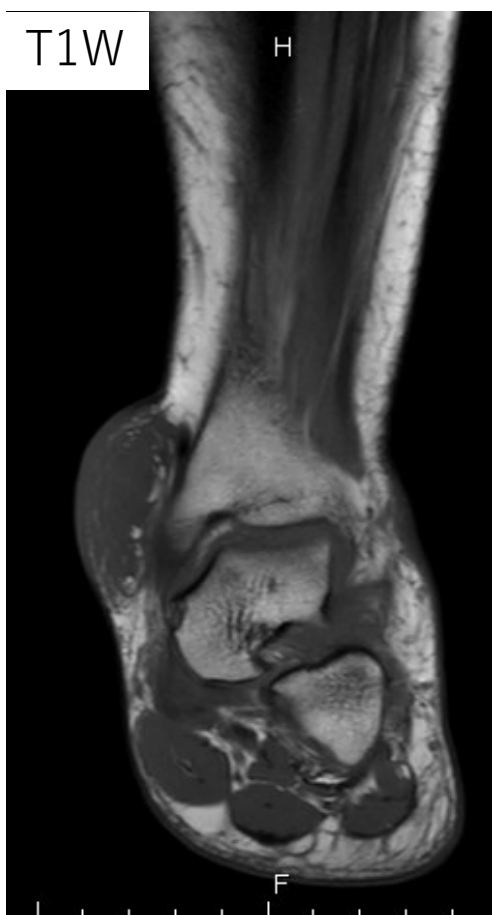


STIR

P

cm

造影MRI Axial像  
(針生検後、切開生検前)



coronal

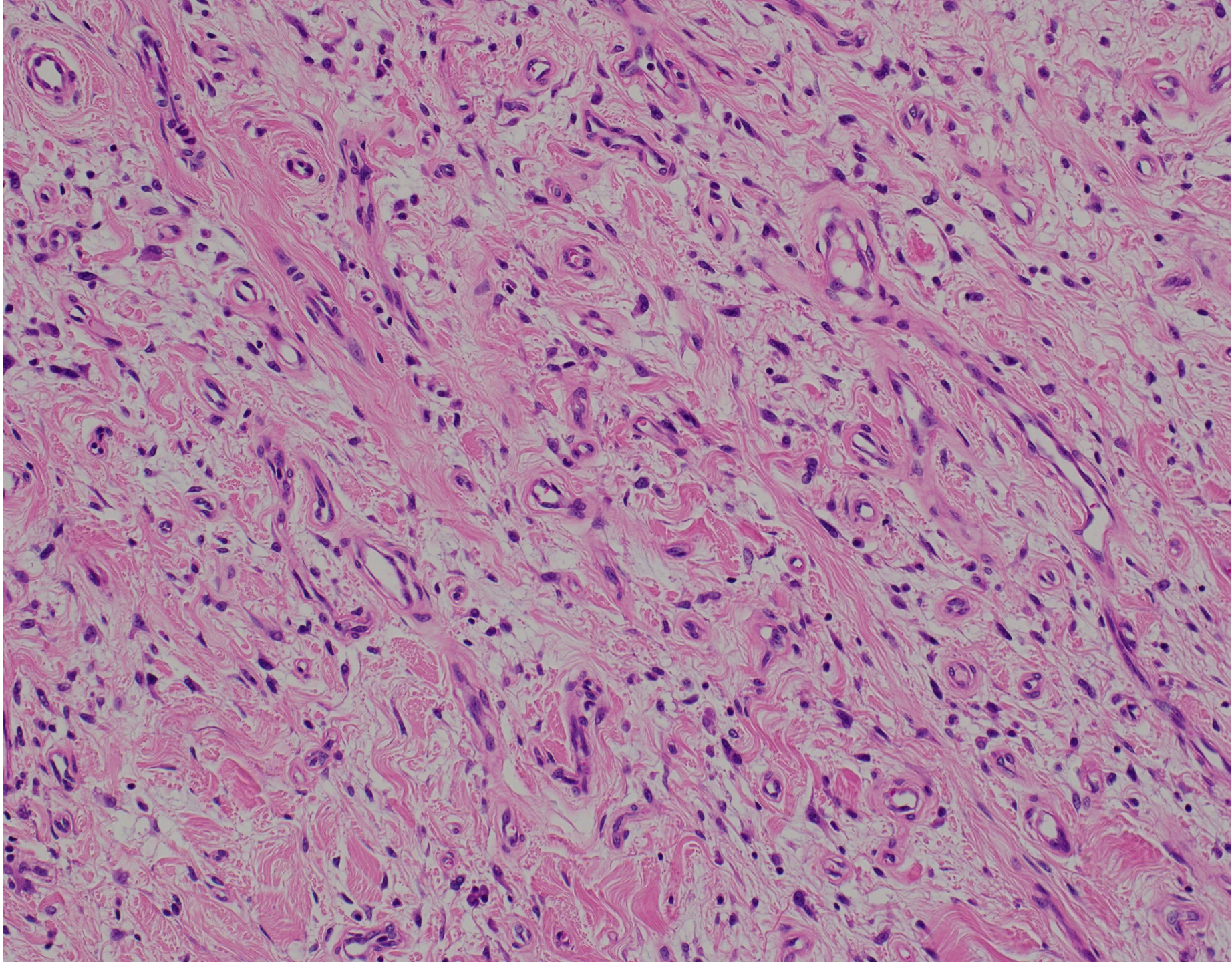
造影MRI  
(針生検後、切開生検前)

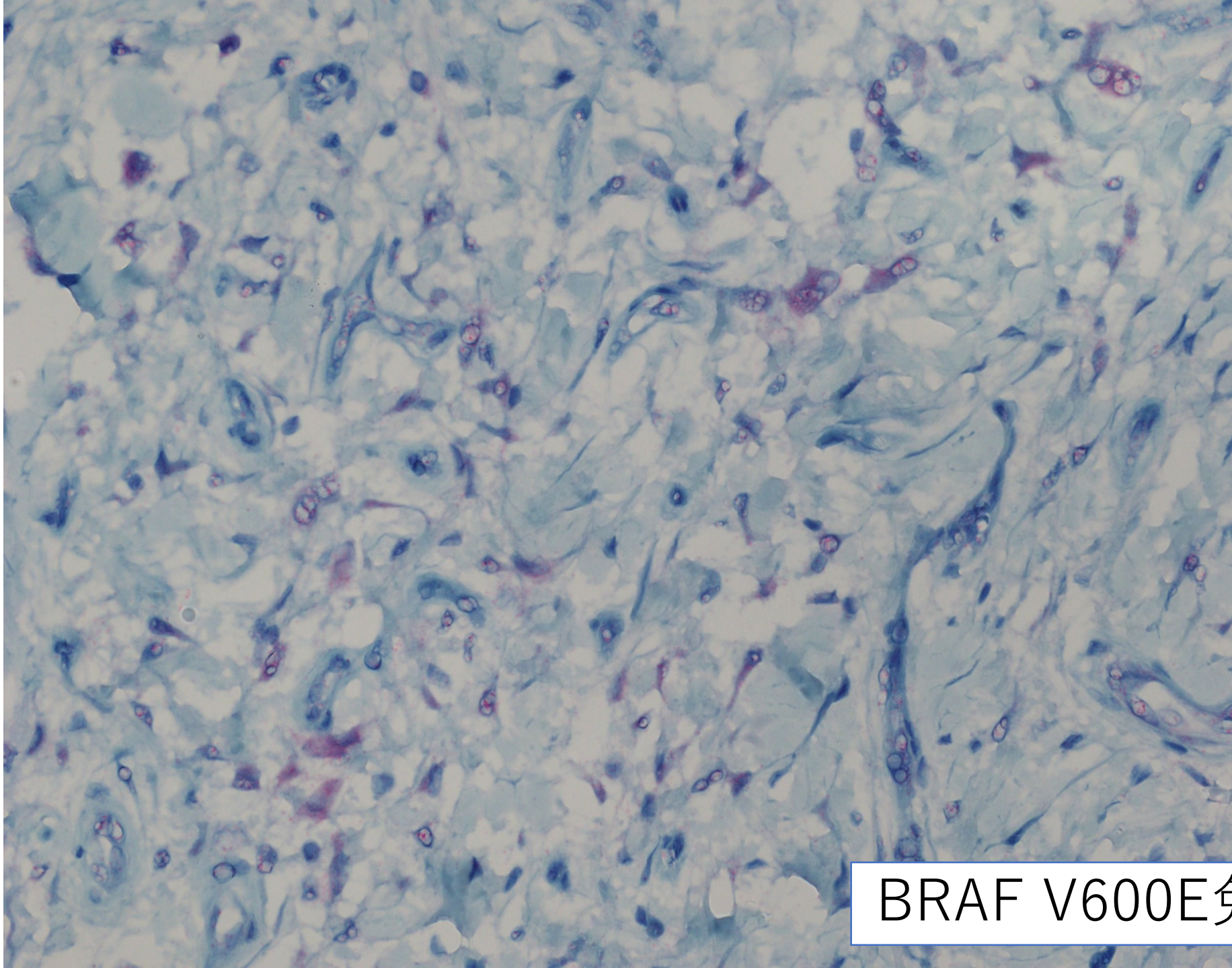
sagittal

切除検体剖面





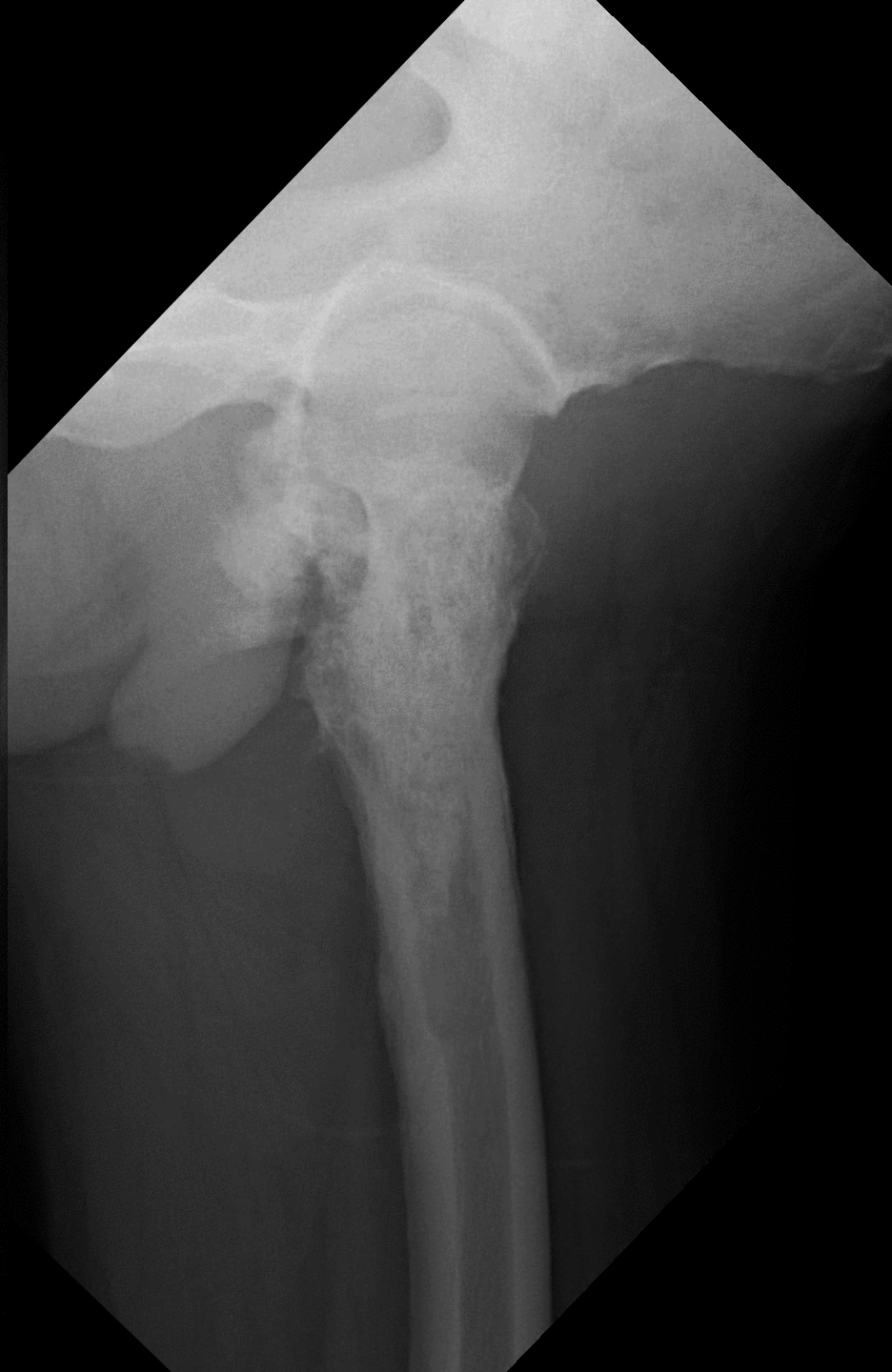
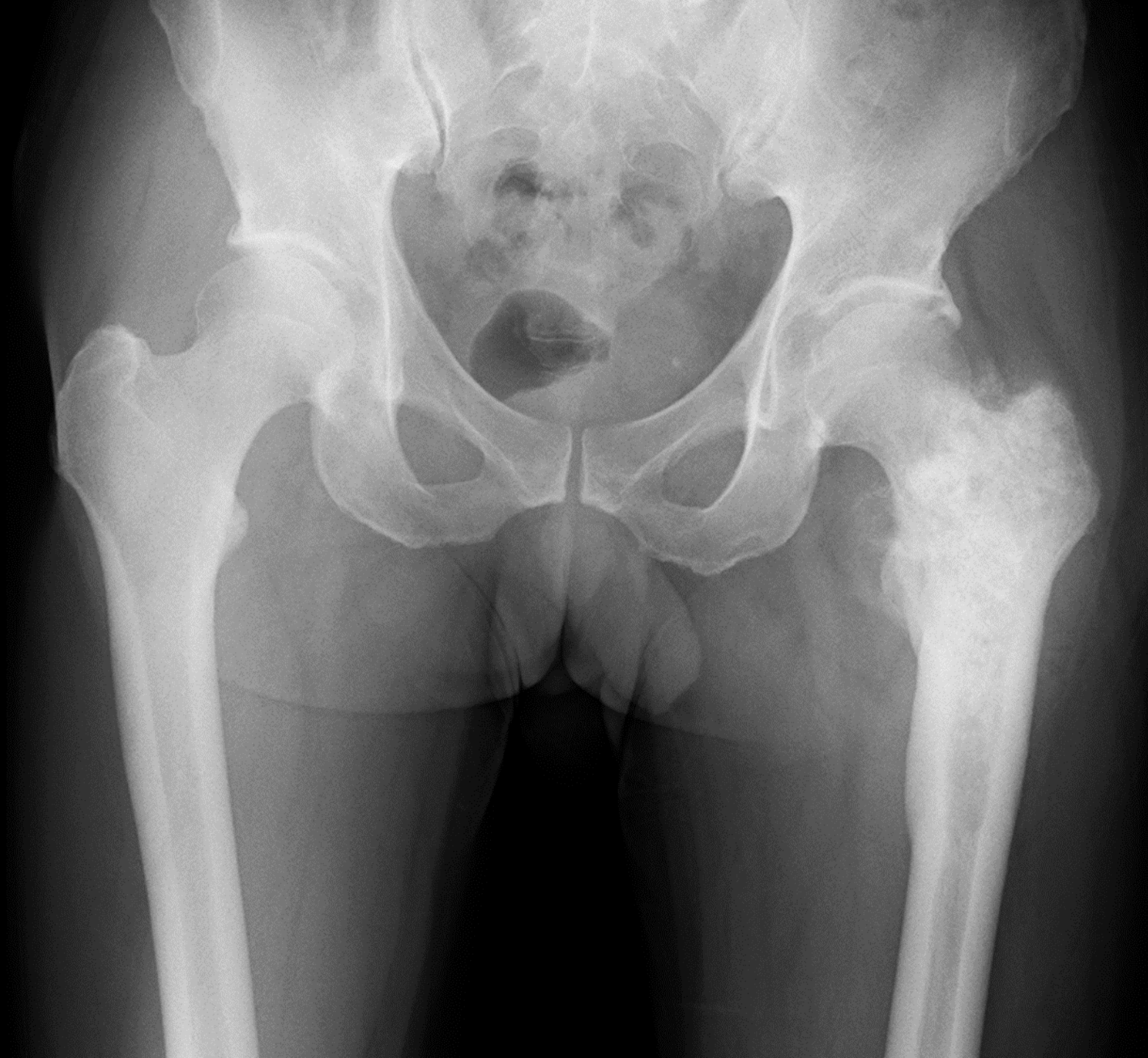


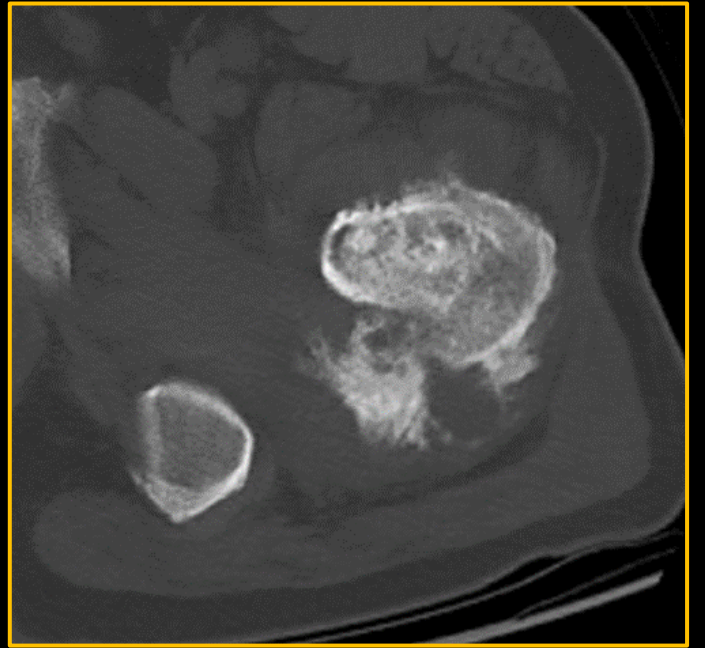


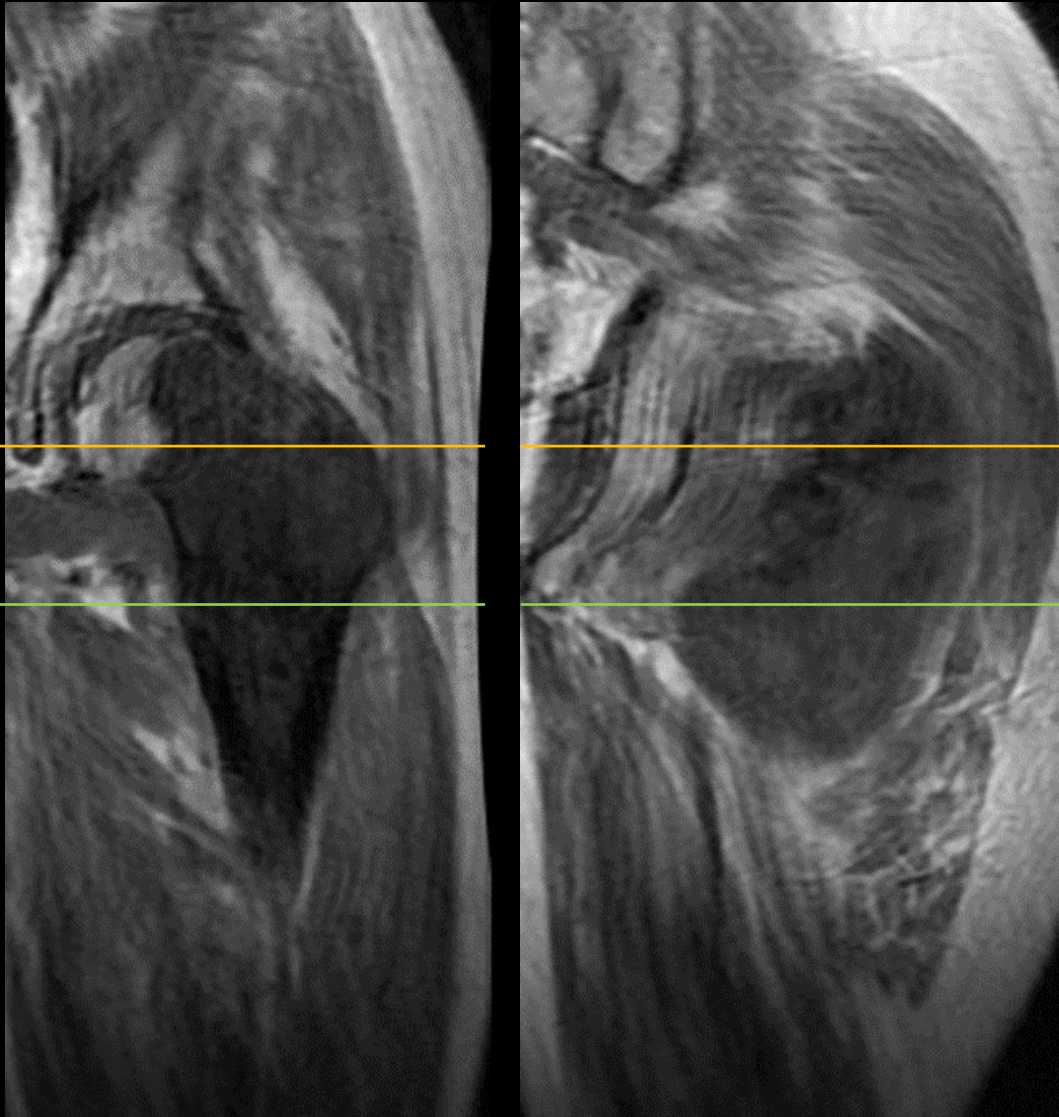
BRAF V600E免疫染色

**演題3**  
**左大腿骨近位骨腫瘍**

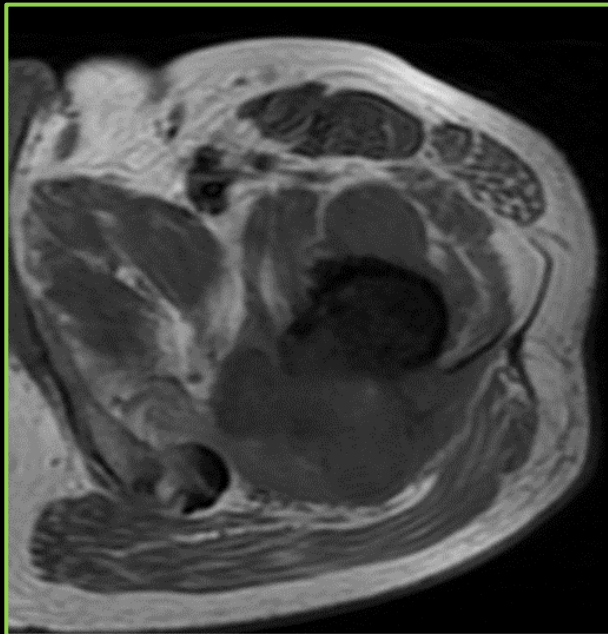
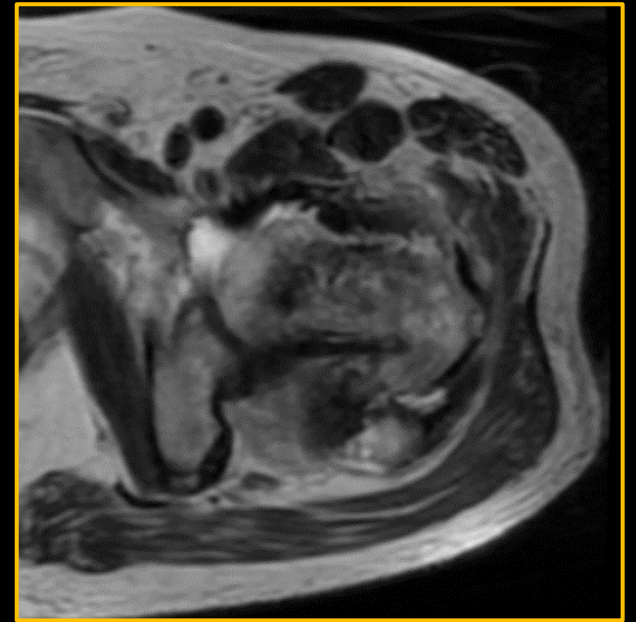
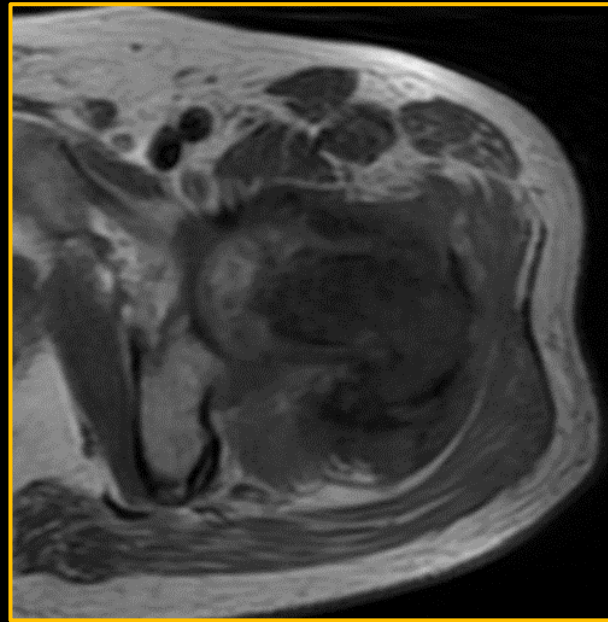
金沢大学







T1WI Cor.



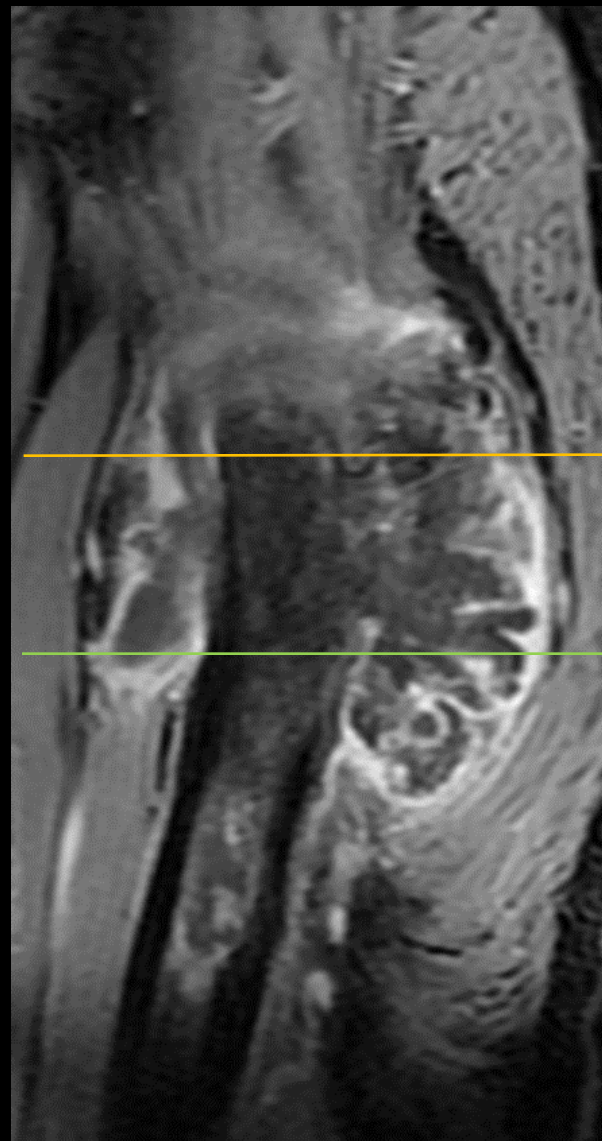
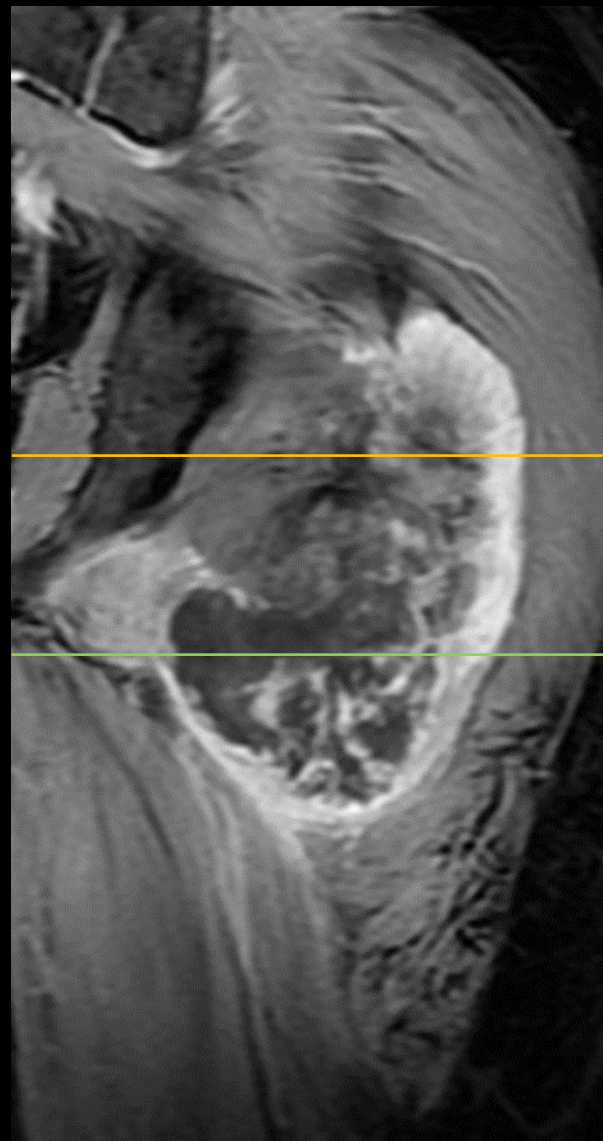
T1WI Axi.

T2WI Axi.

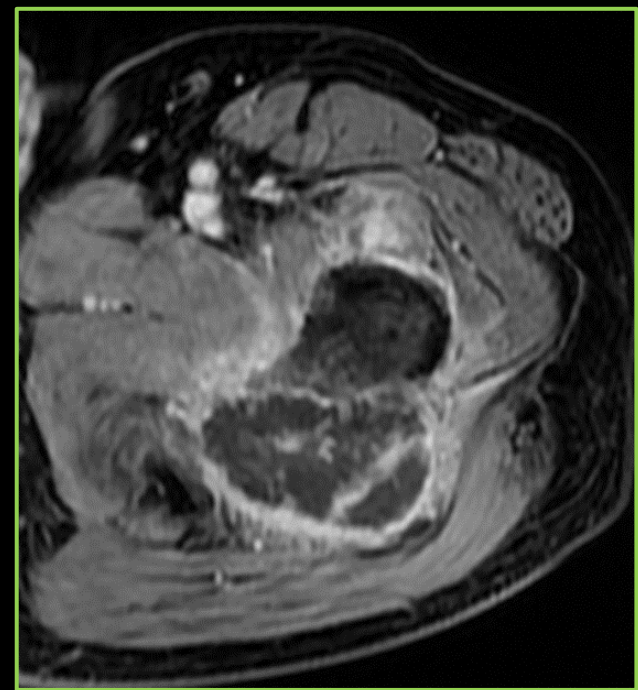
Gd造影



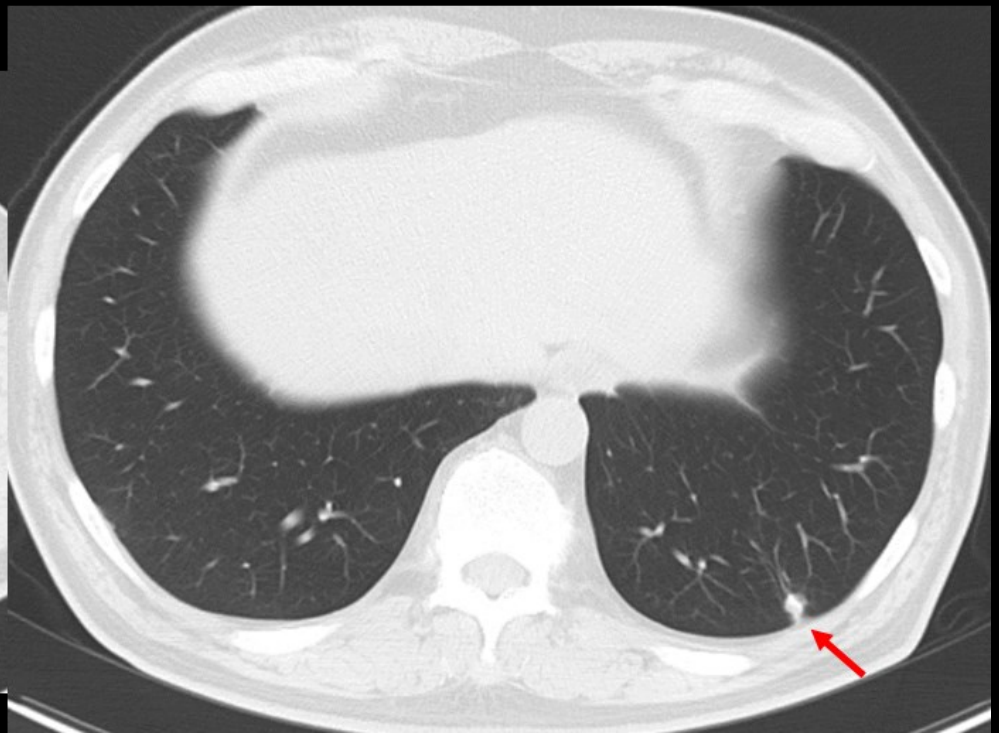
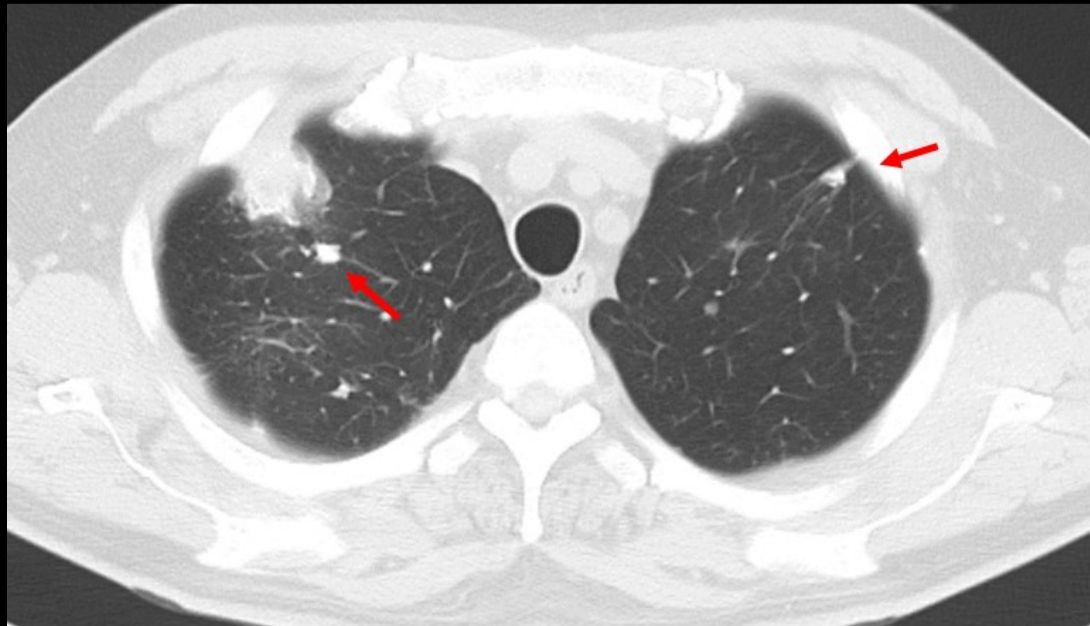
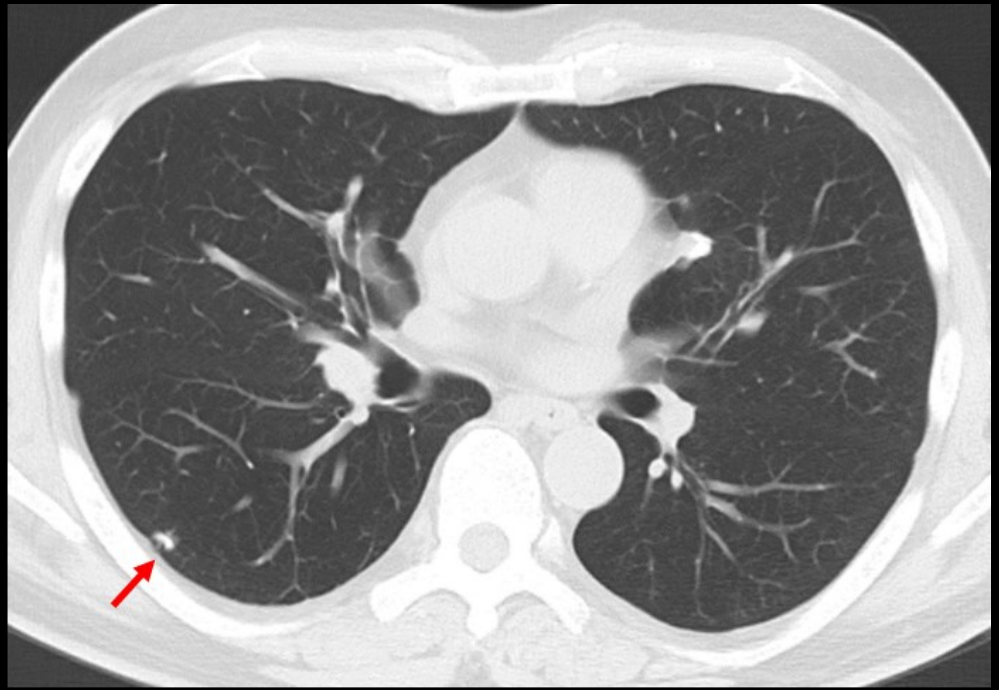
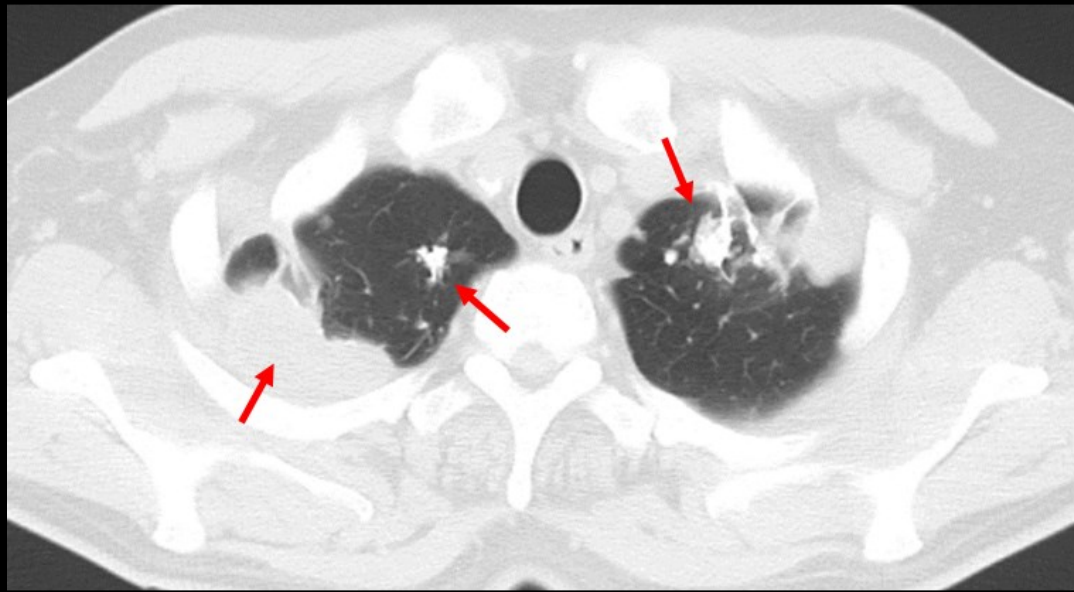
Cor.



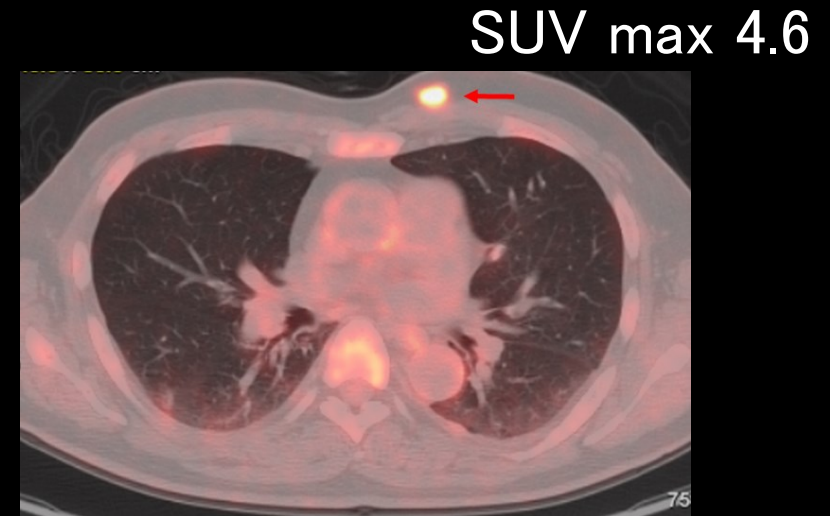
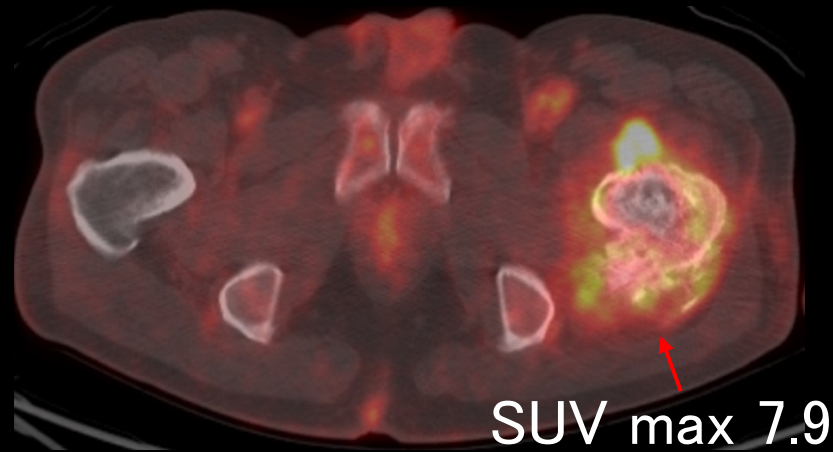
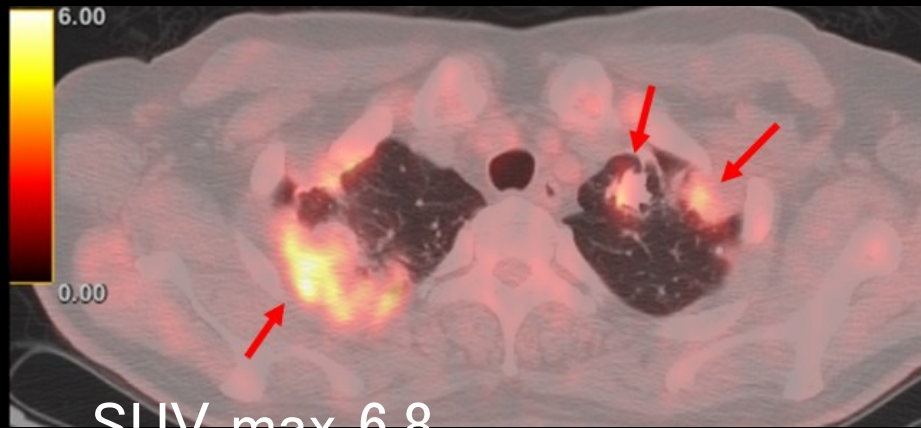
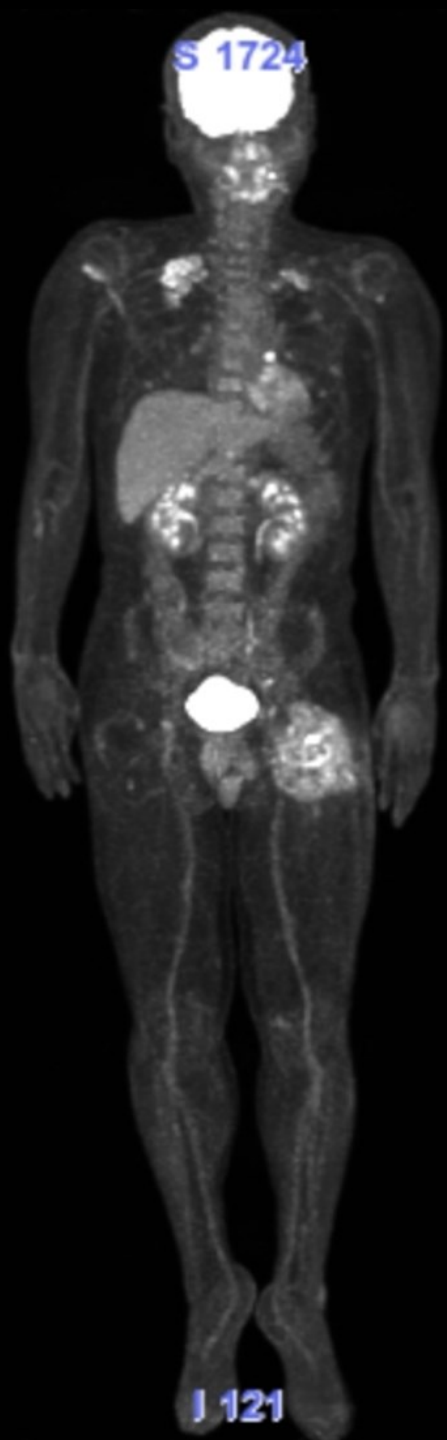
Sag.



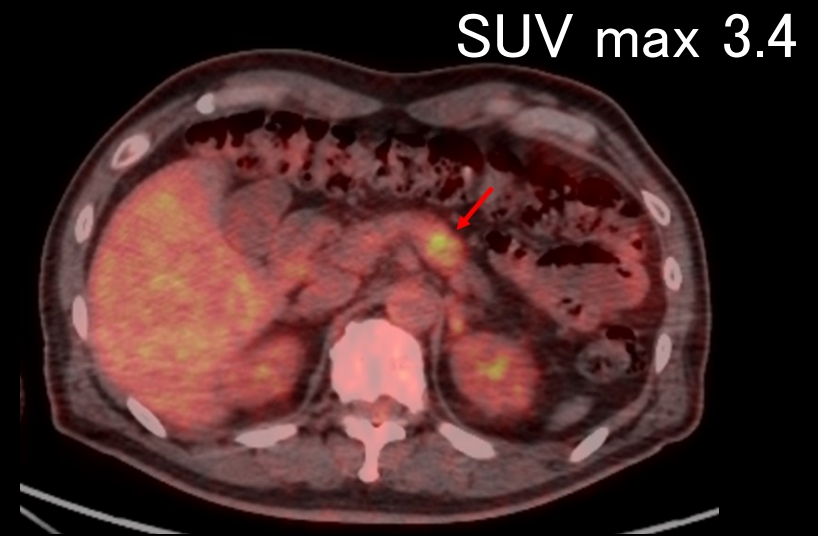
Axi.





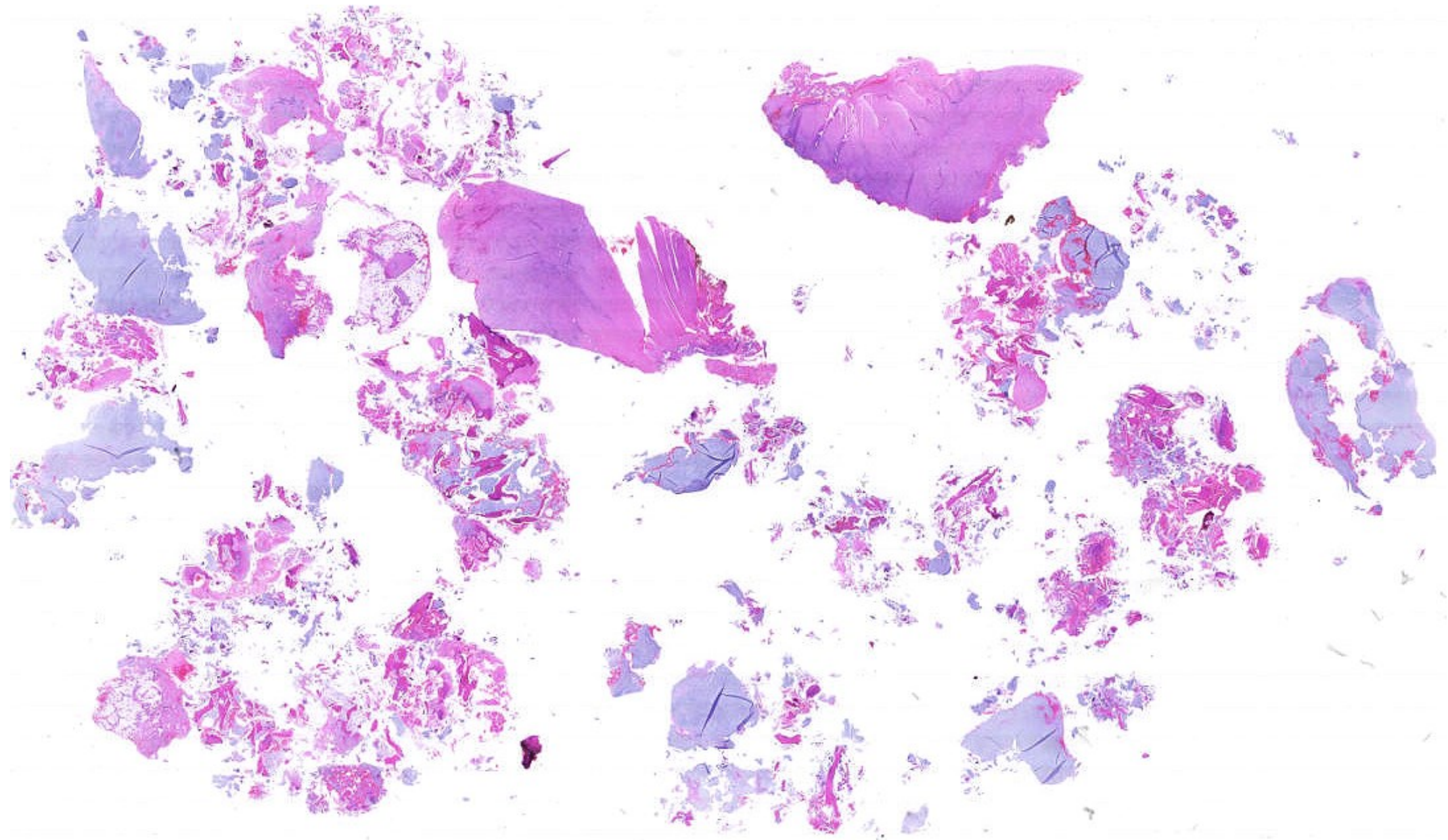


前胸部皮下病變

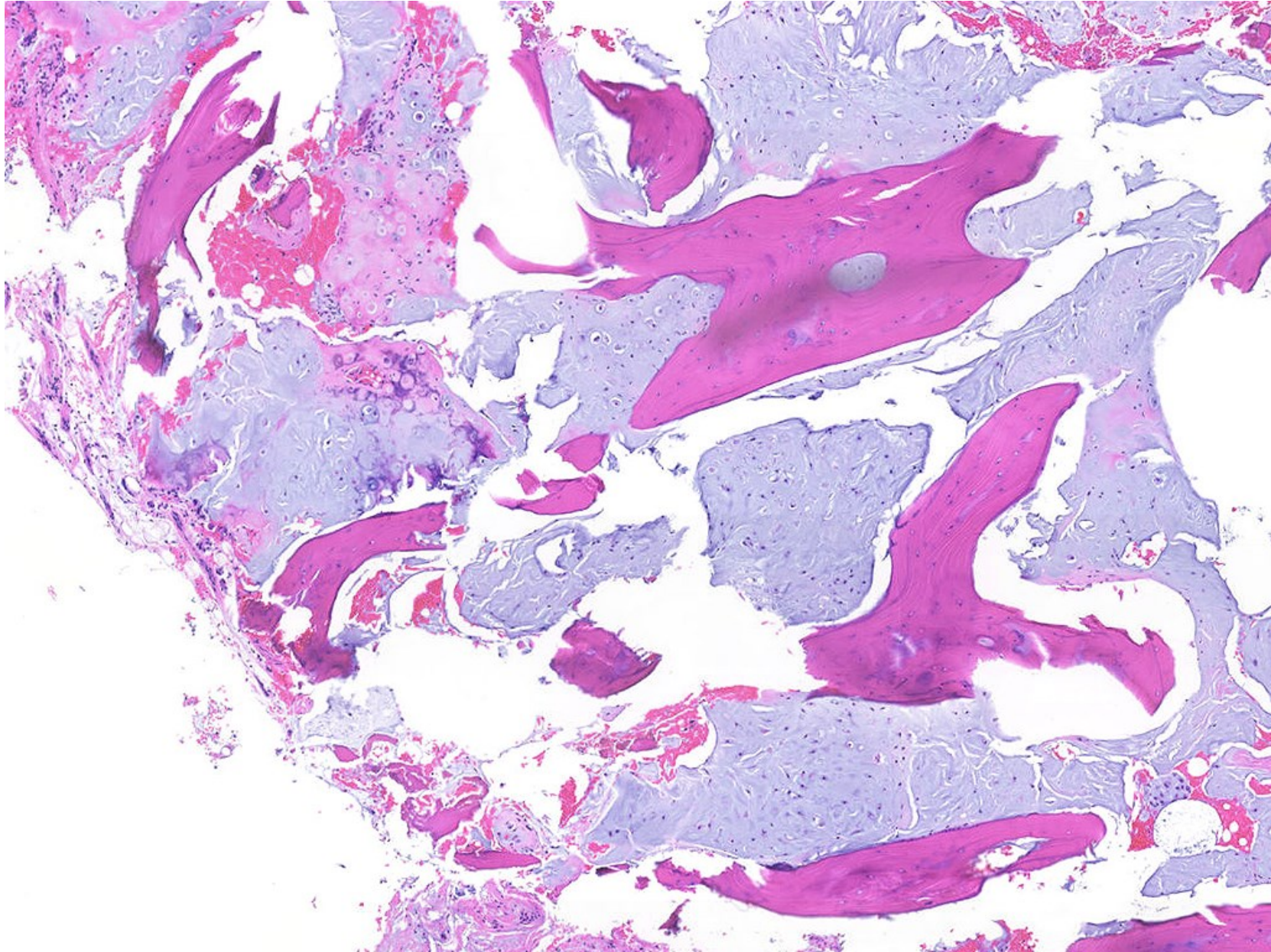


睥体部病變

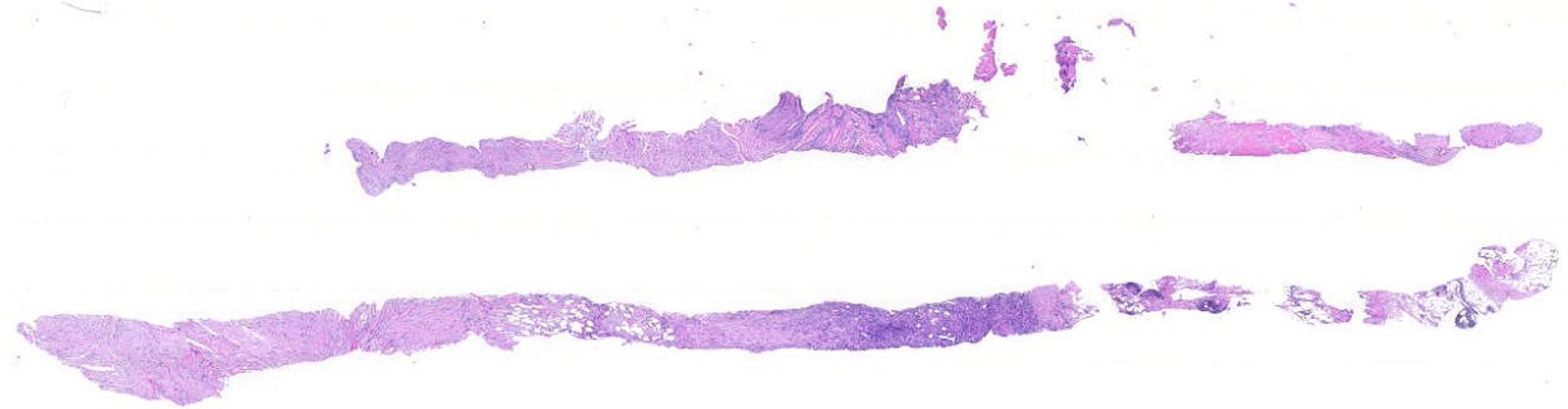
# 配付標本① 大腿骨近位切開生検



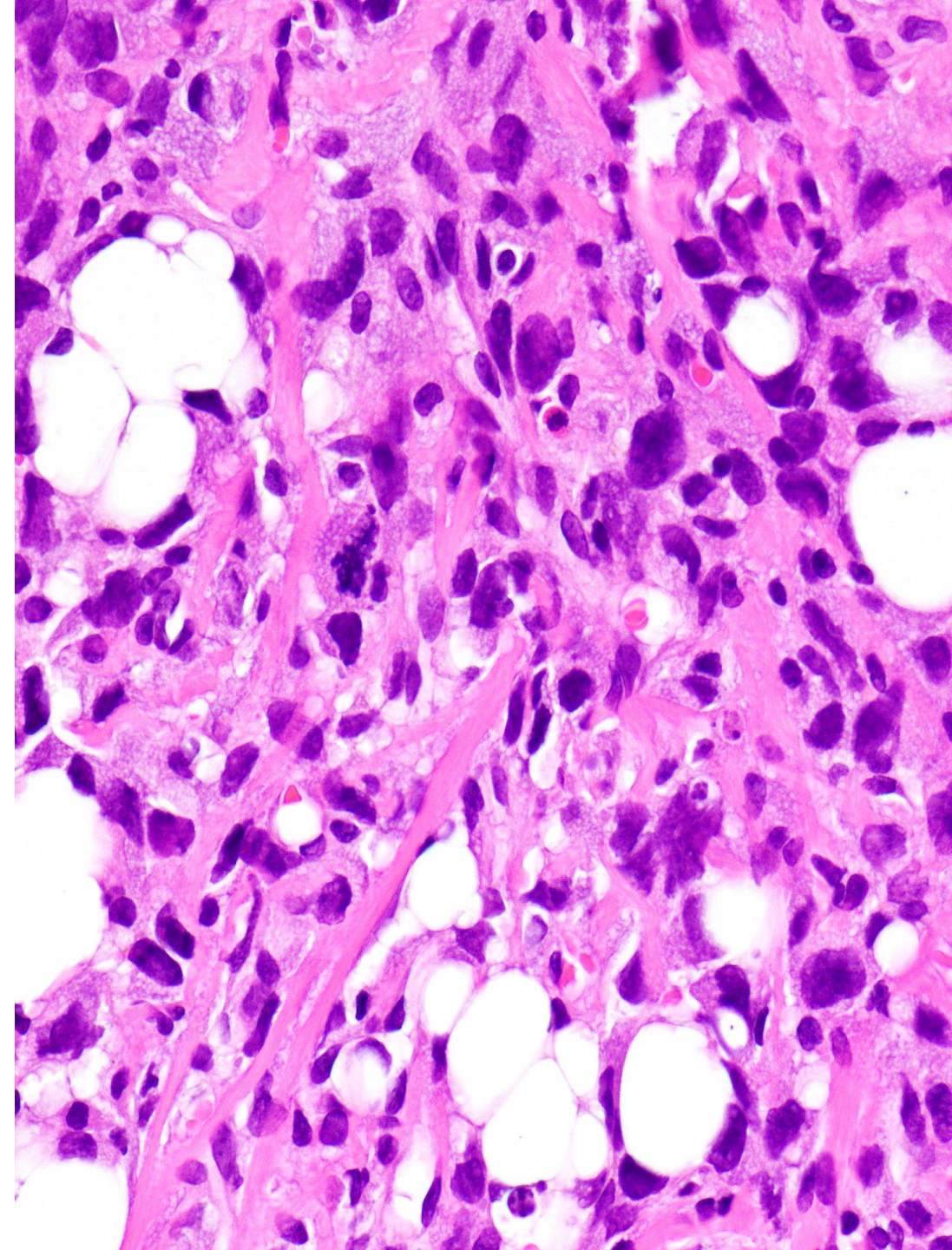
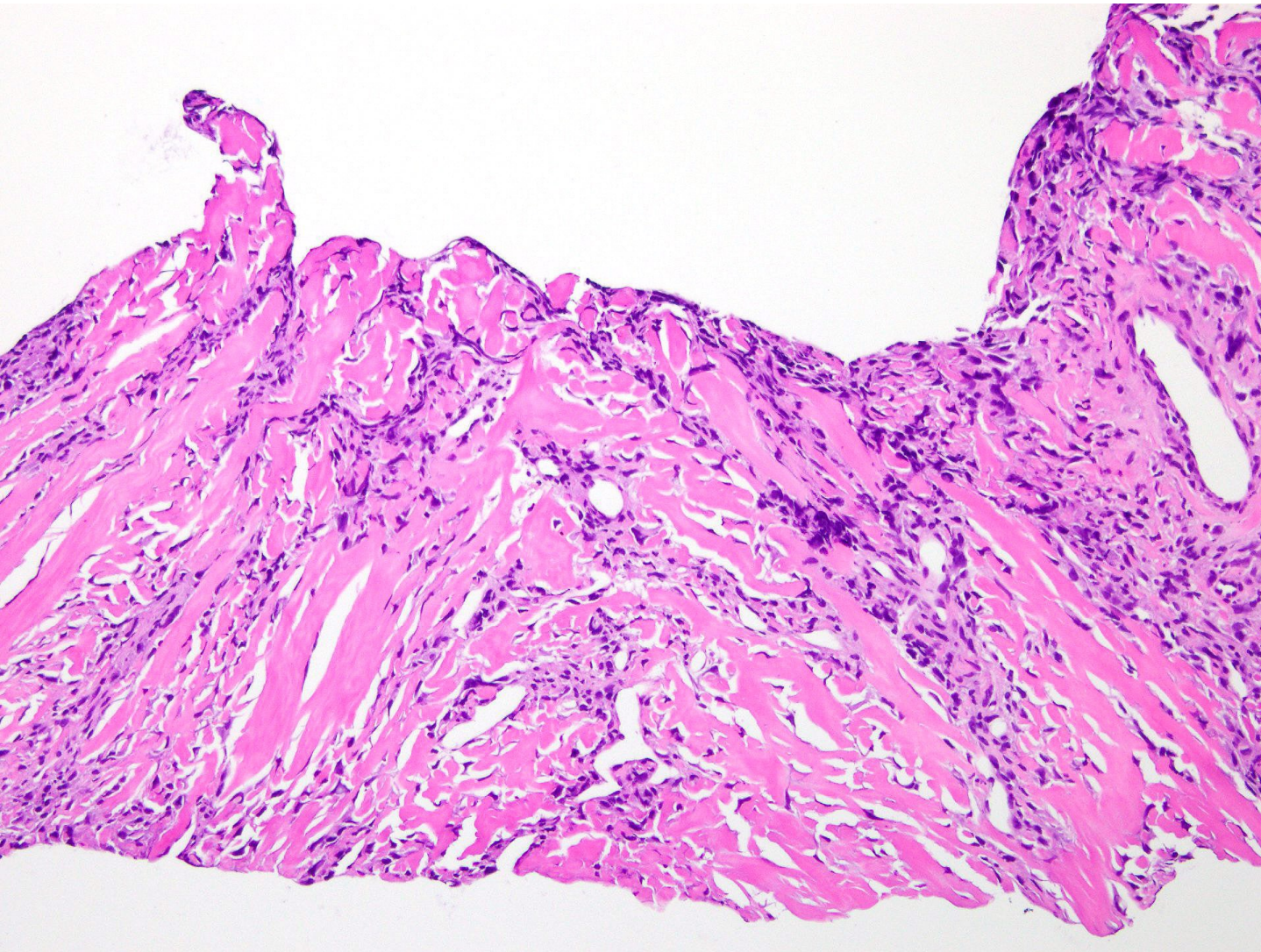
# 配付標本① 大腿骨近位切開生検



## 配付標本② 肺病変針生検

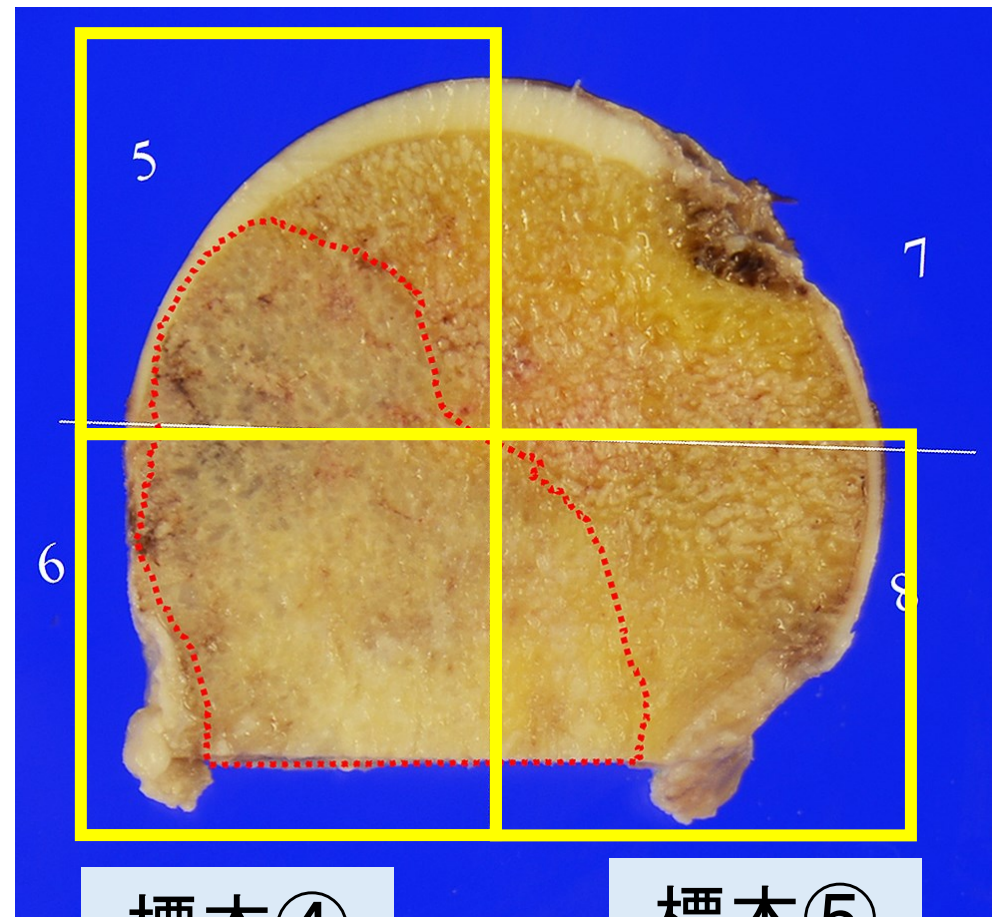
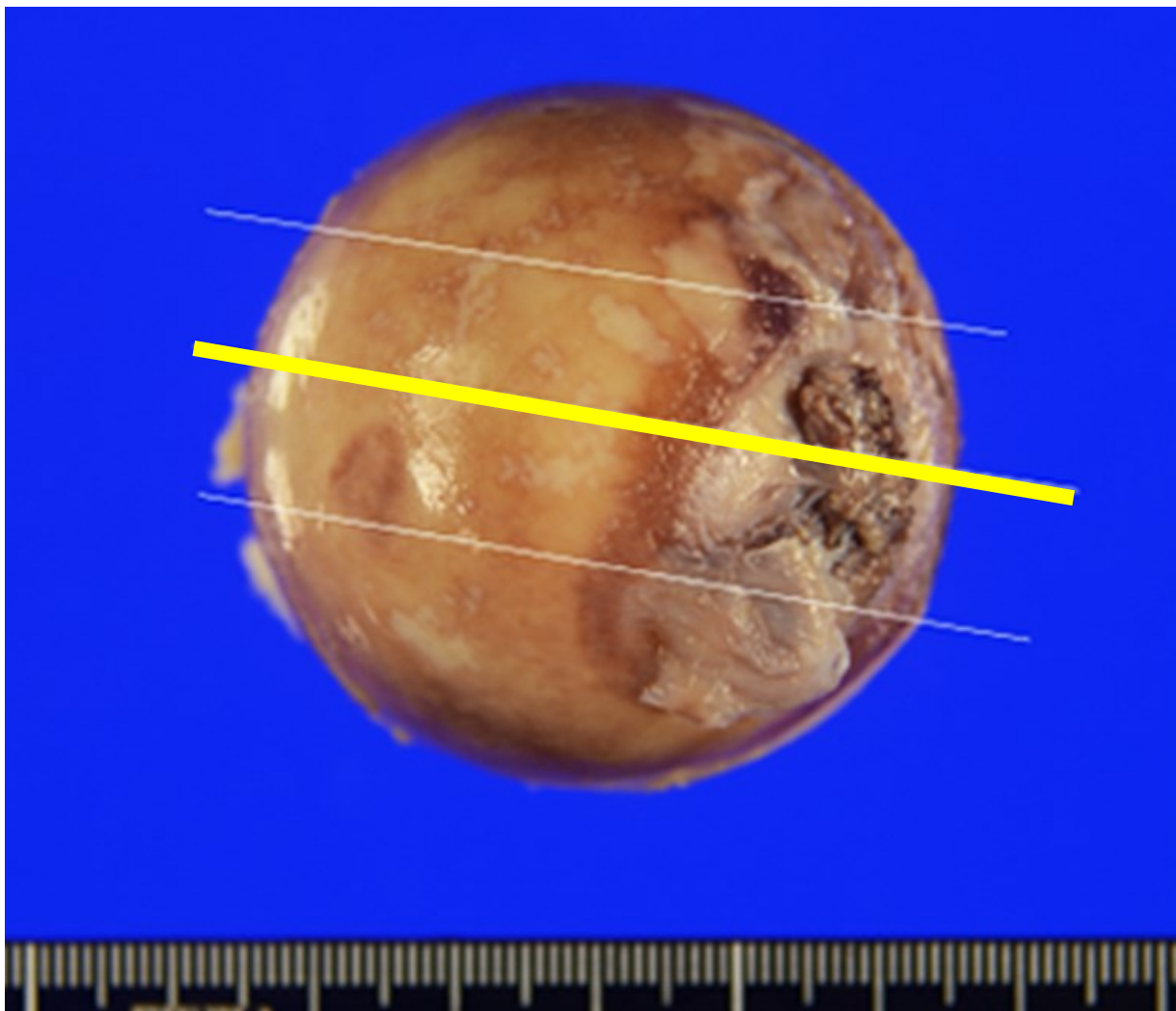


配付標本② 肺病変針生検



# 配付標本③④⑤ 大腿骨頭切除検体

標本③



標本④

標本⑤

# 演題4









# 演題5

右大腿後面に発生した軟部腫瘍の一例

34歳 男性

T1 冠状断



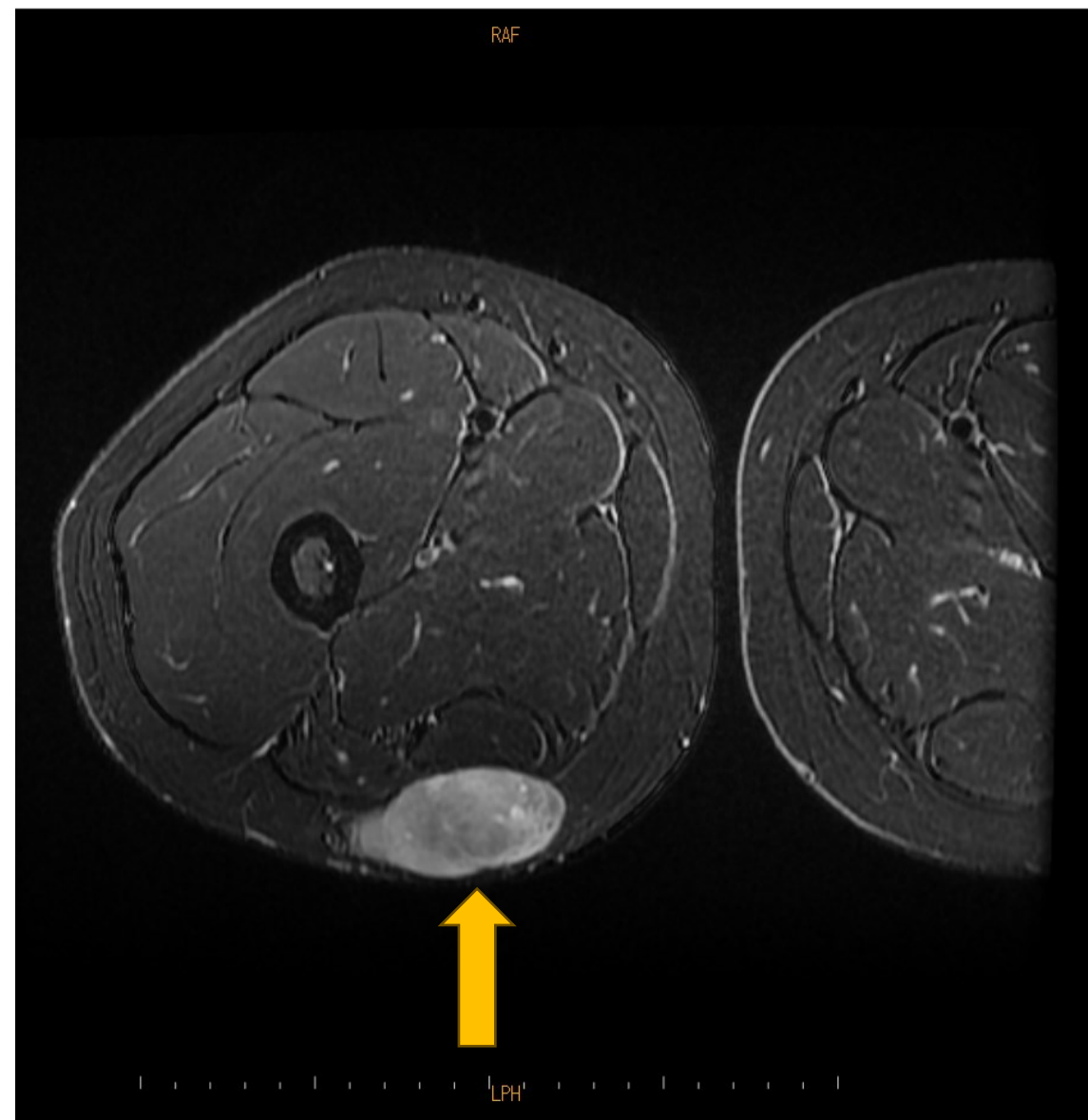
T2 冠状断



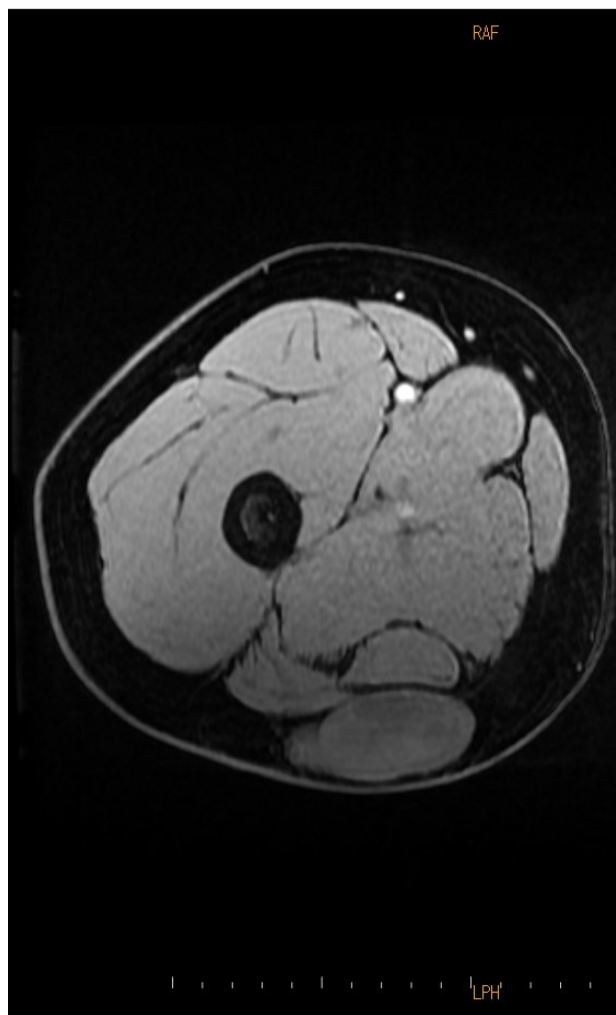
T2 冠状断 脂肪抑制



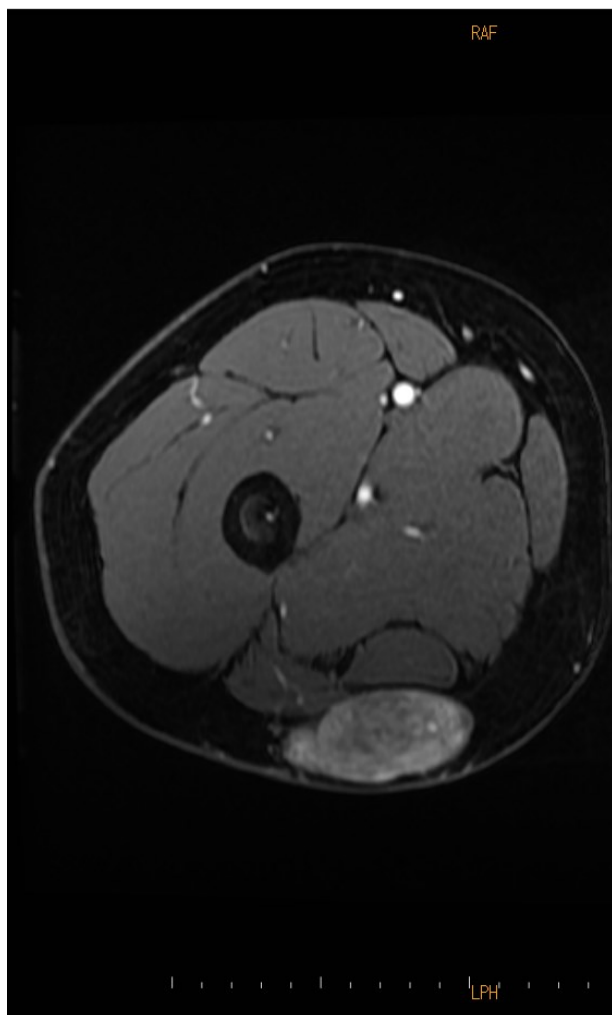
T2 轴位断 脂肪抑制



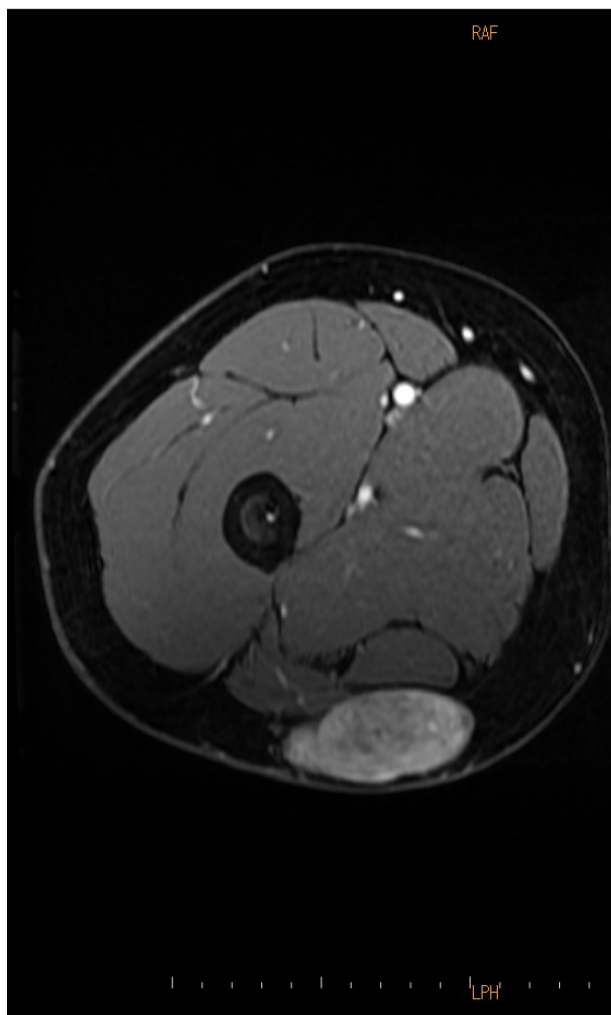
dynamic pre



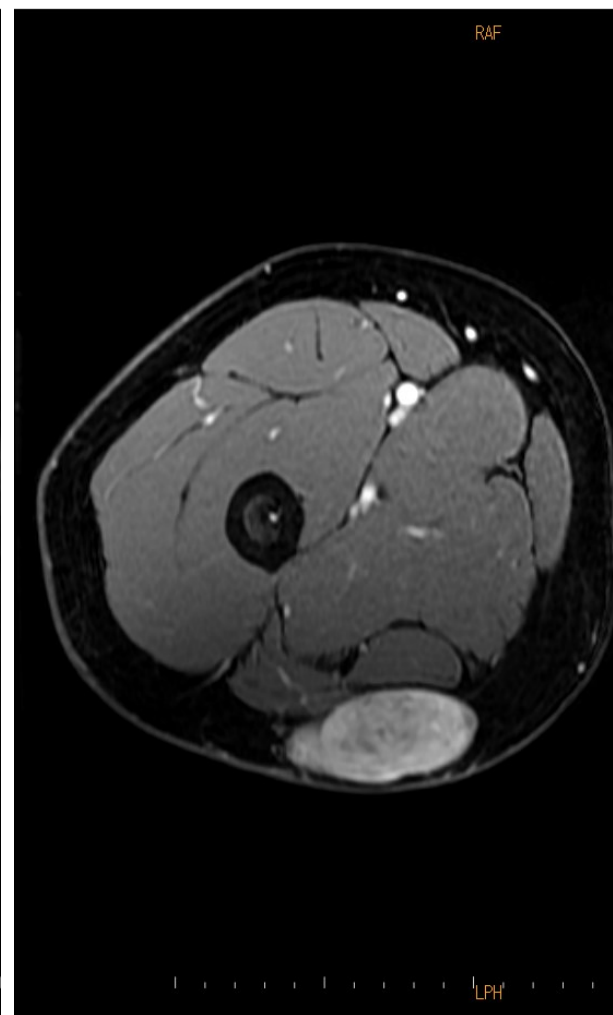
45sec



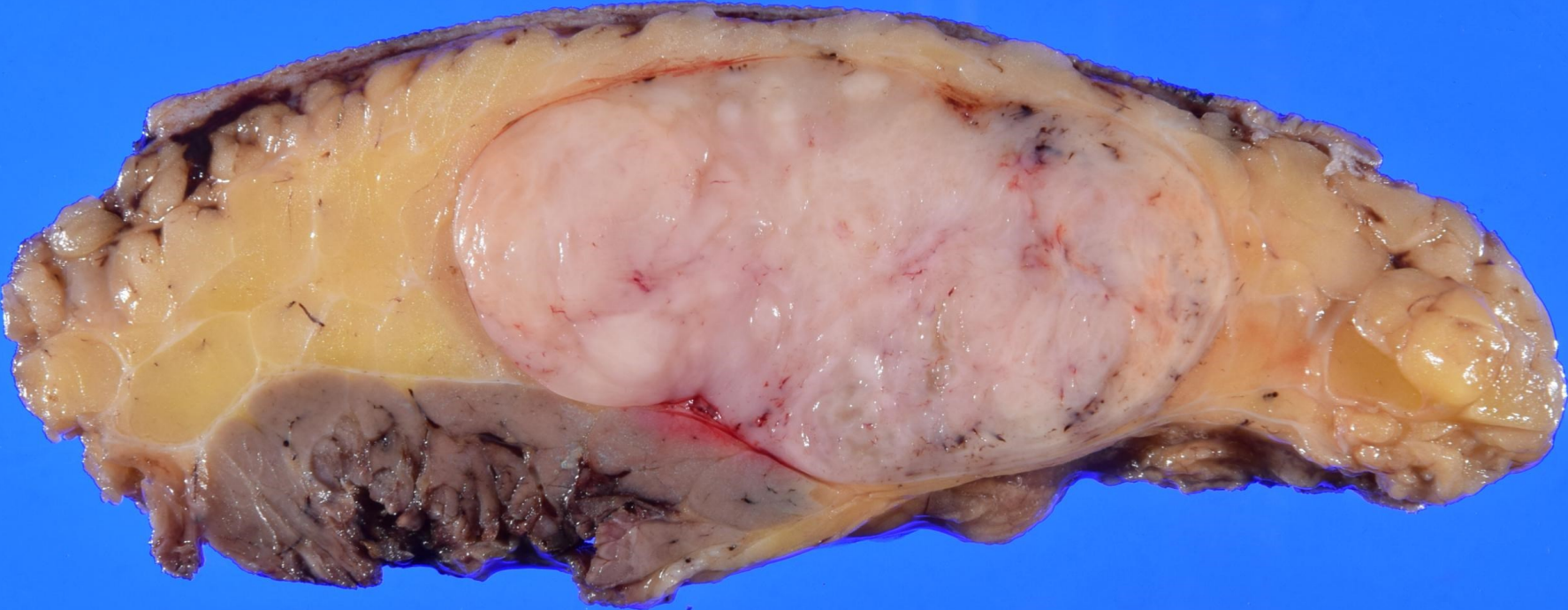
80sec



120sec



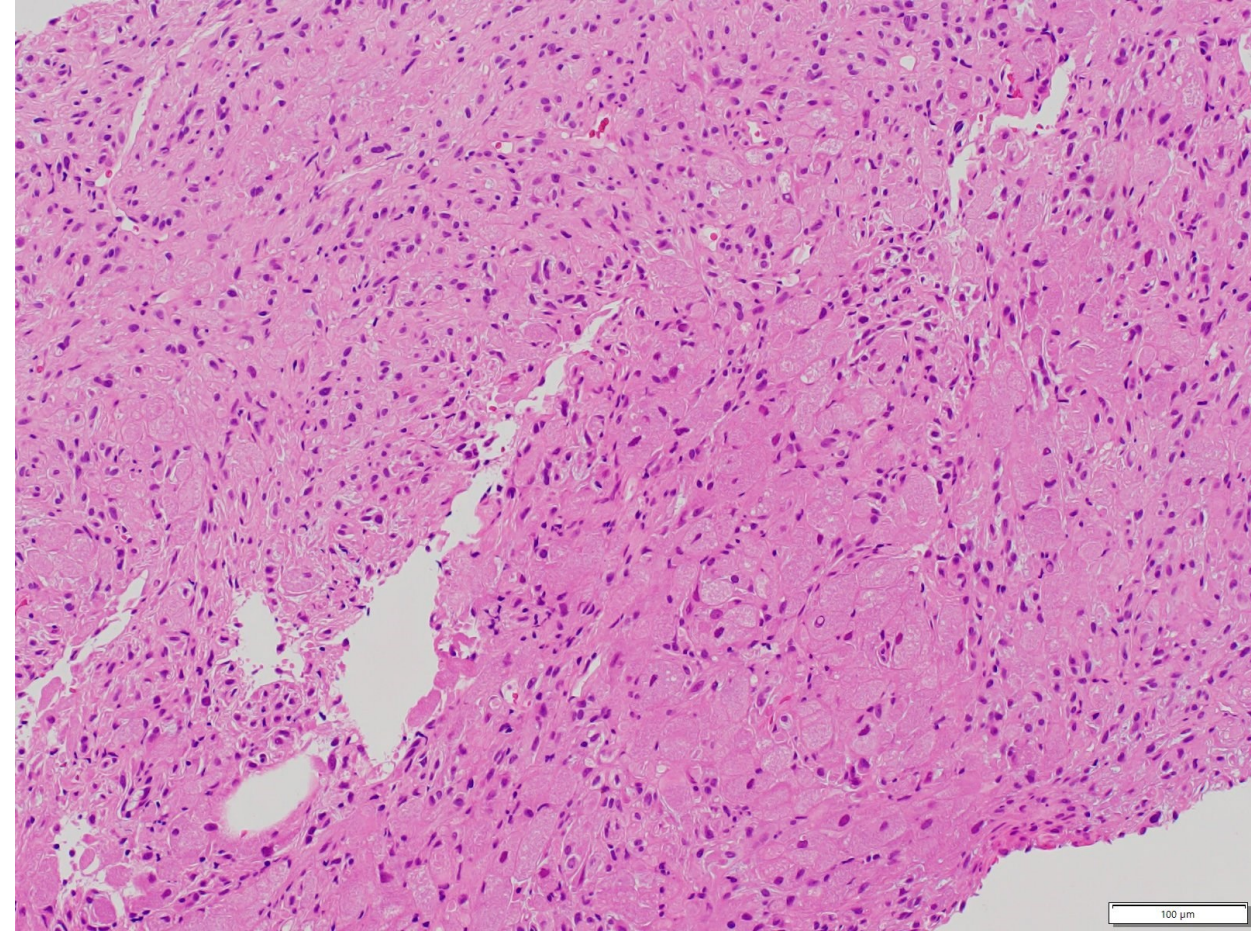
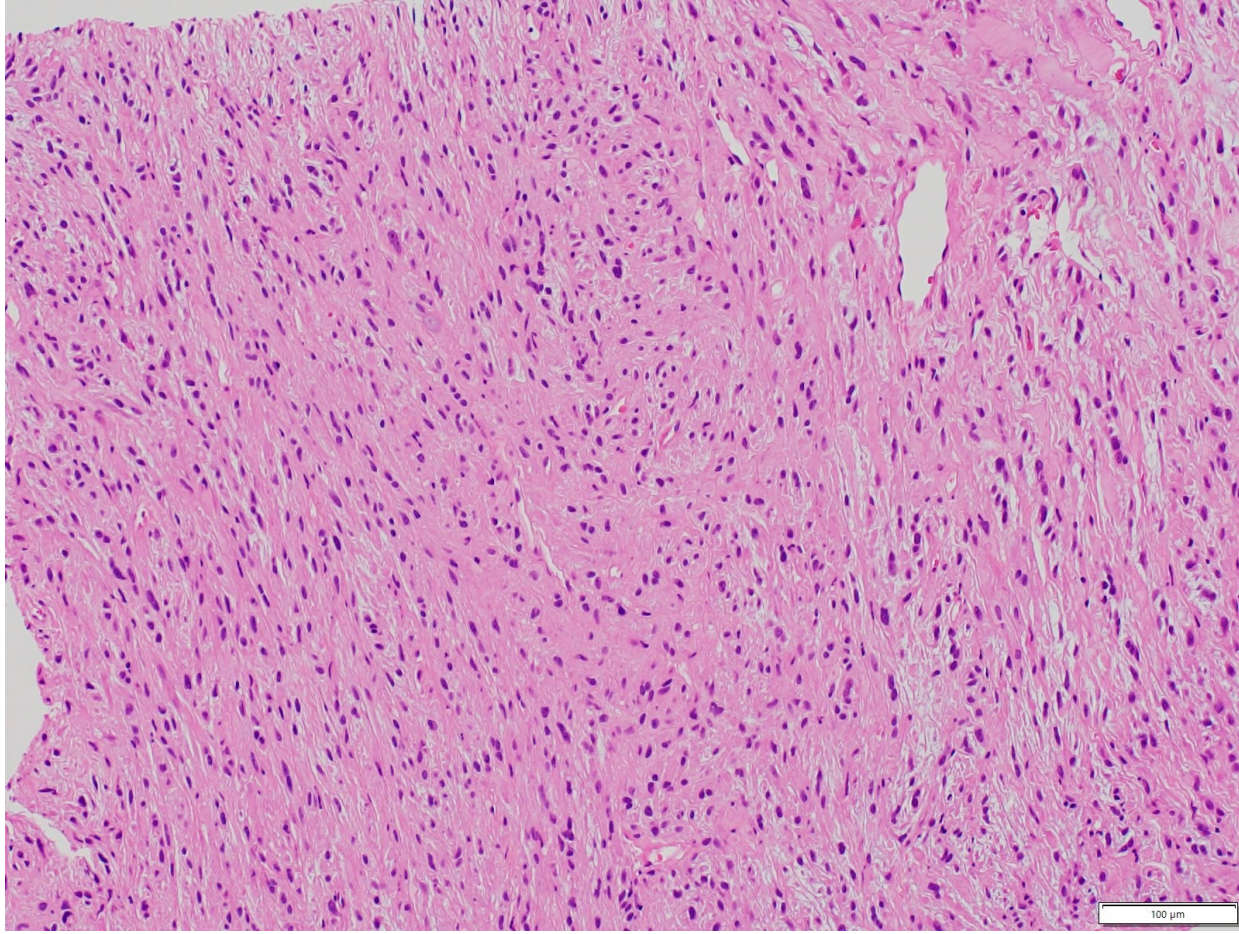
手術材料



30

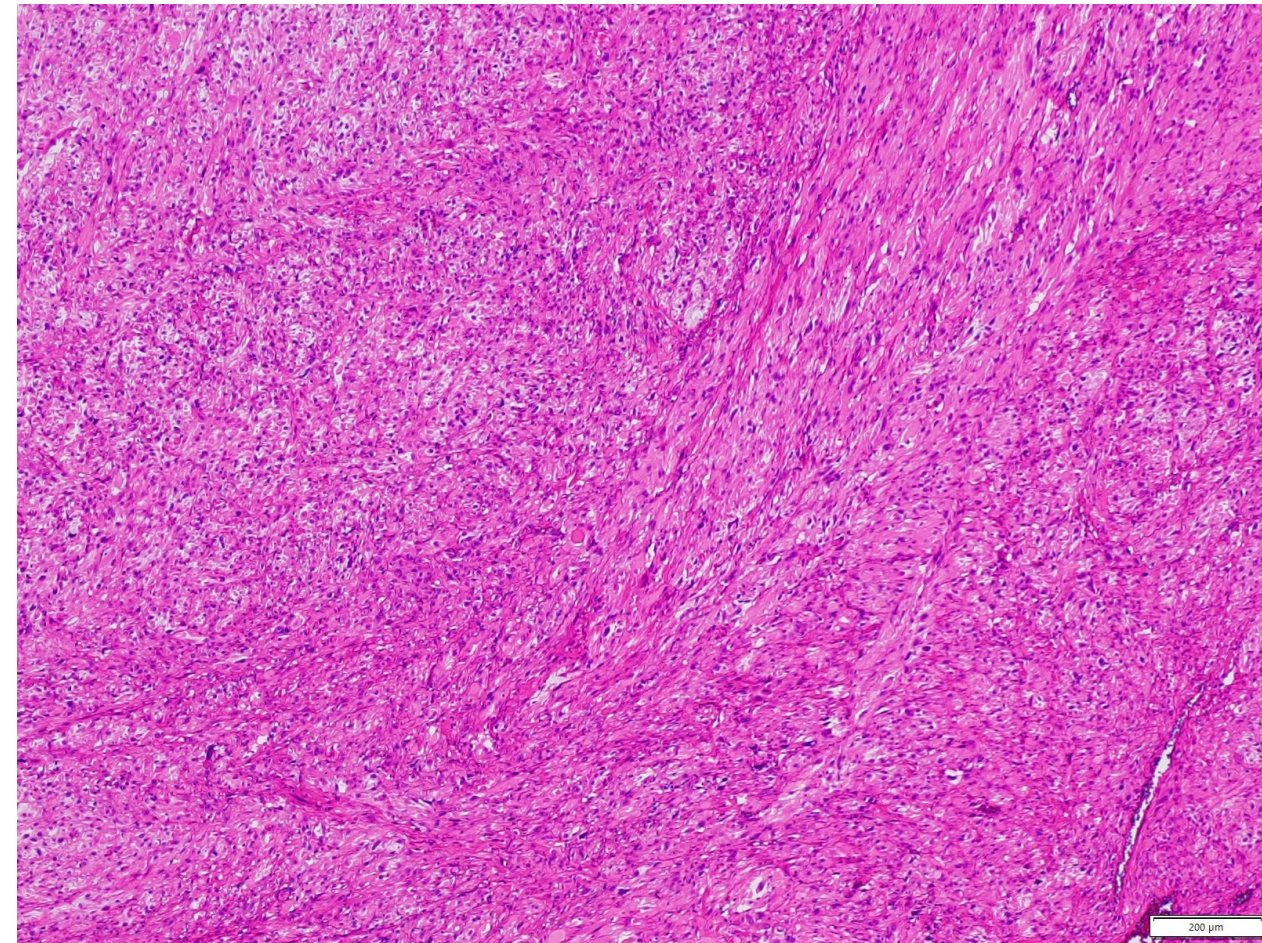
40

# 針生検 対物10倍

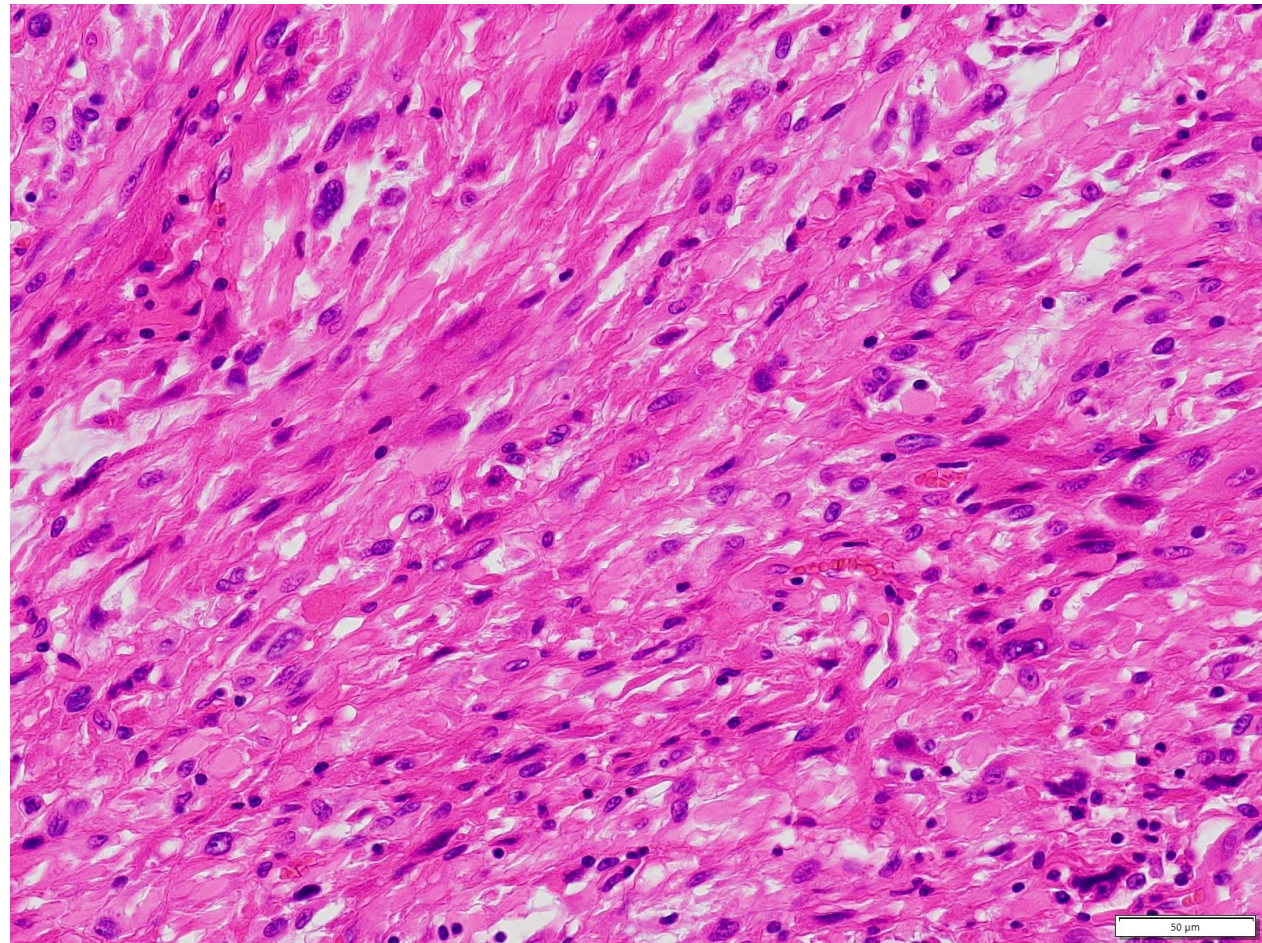




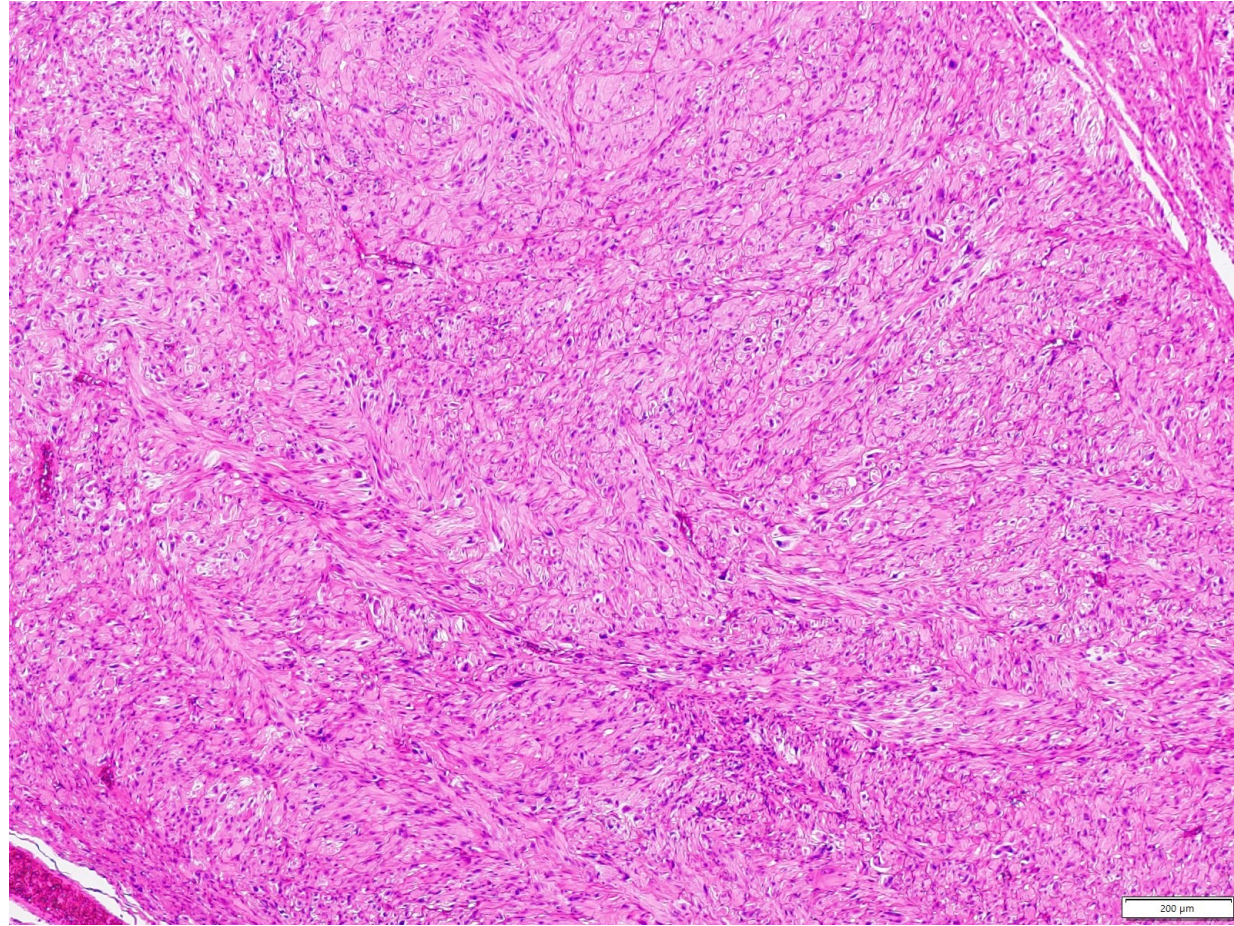
手術材料 対物4倍



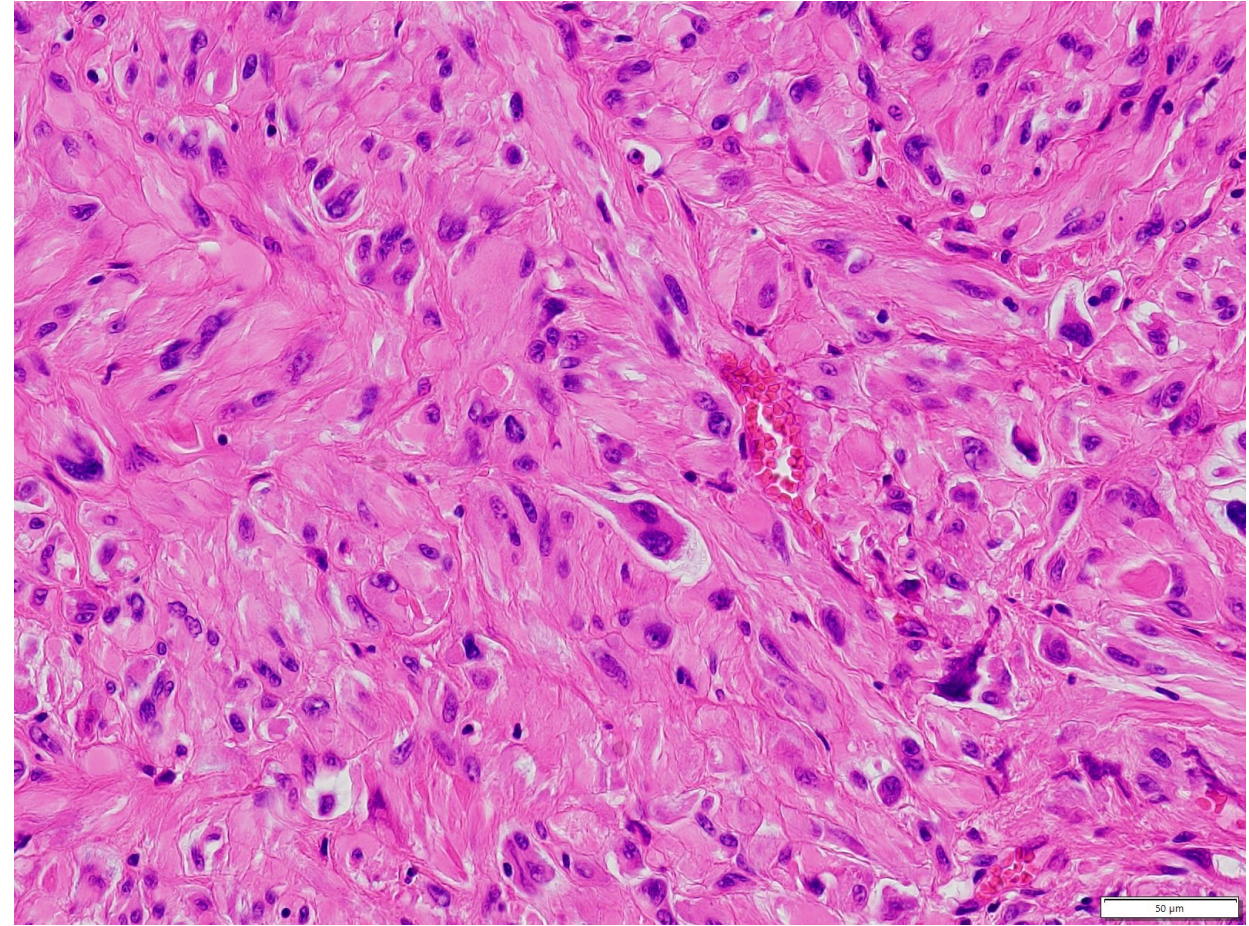
手術材料 対物20倍



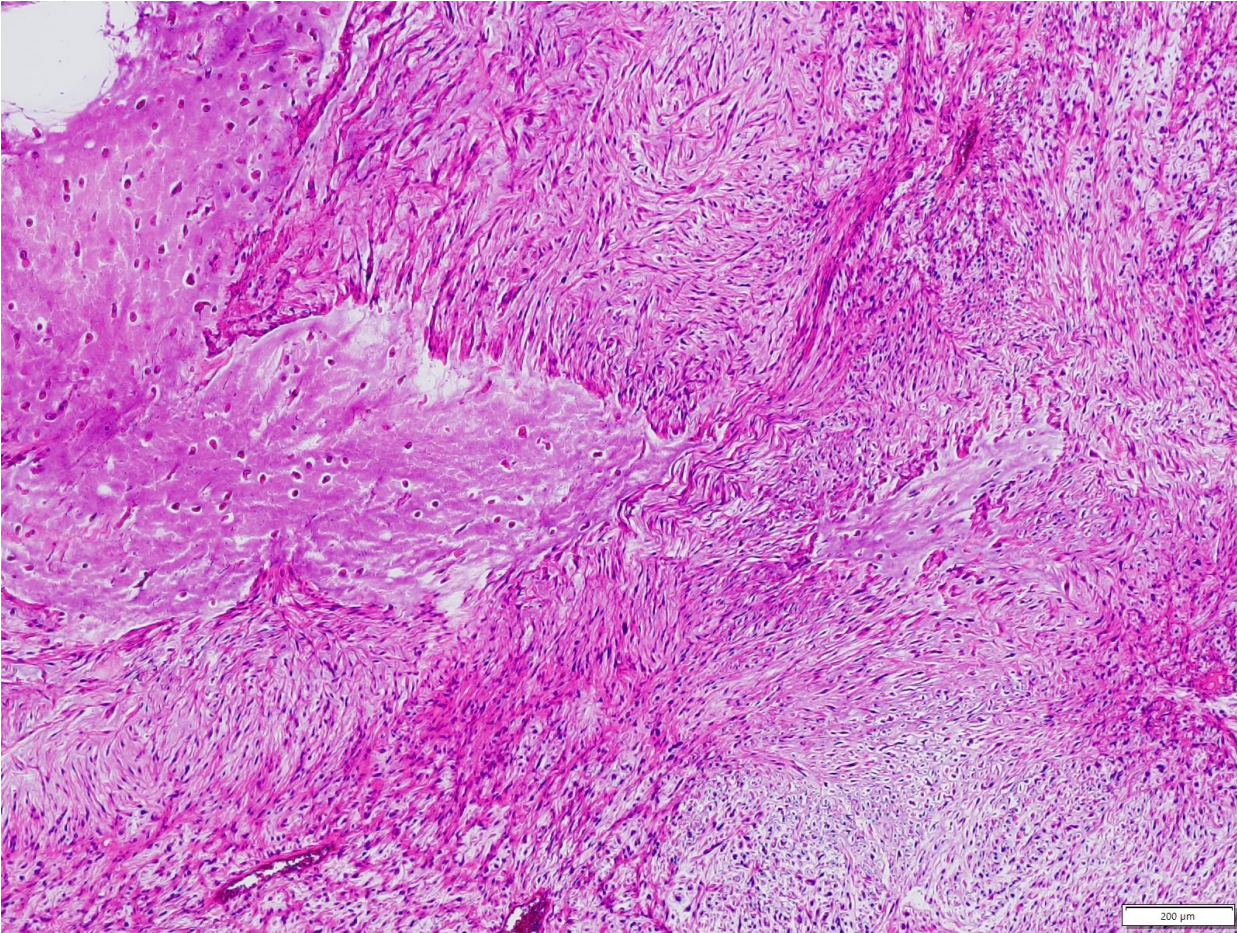
手術材料 対物4倍



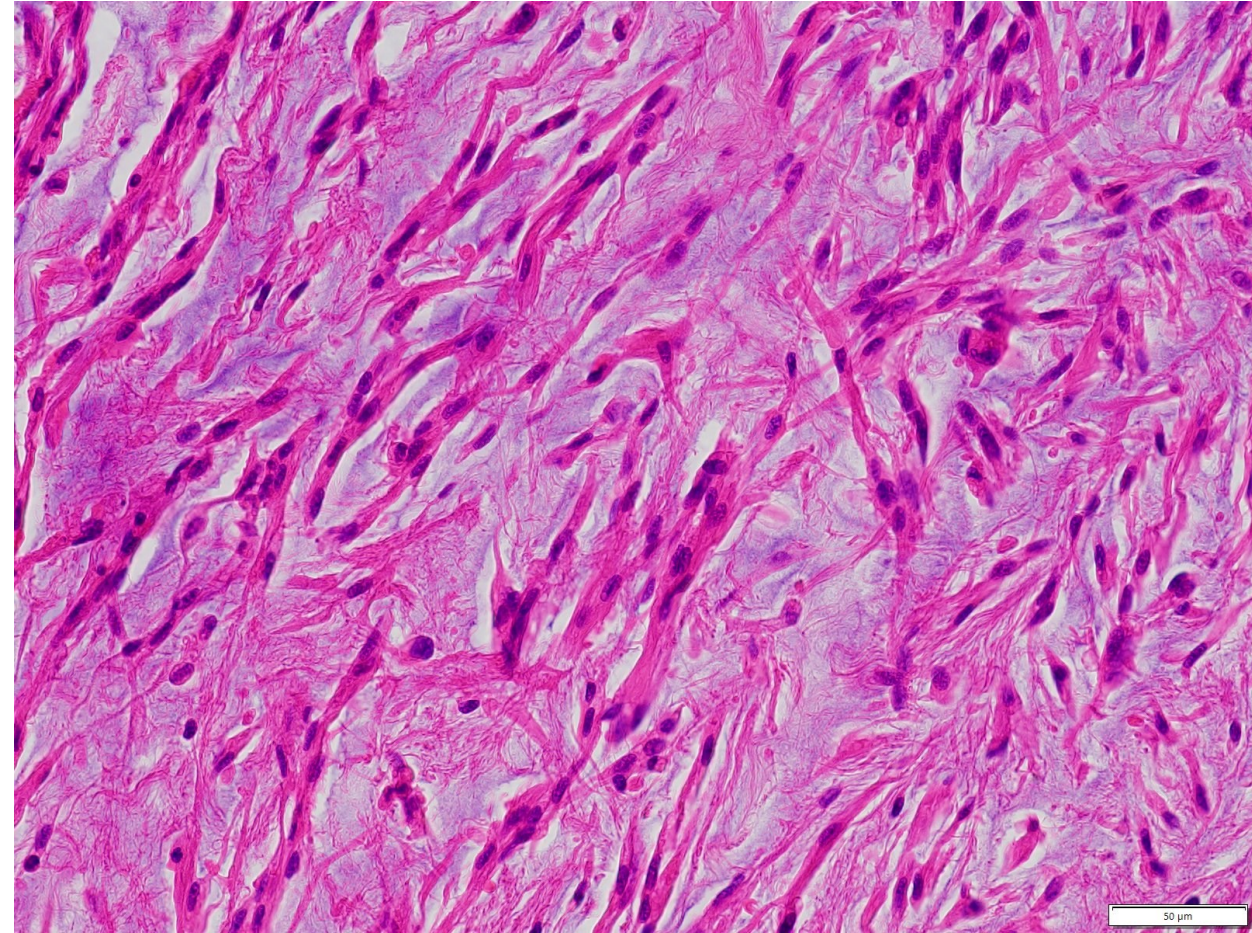
手術材料 対物20倍



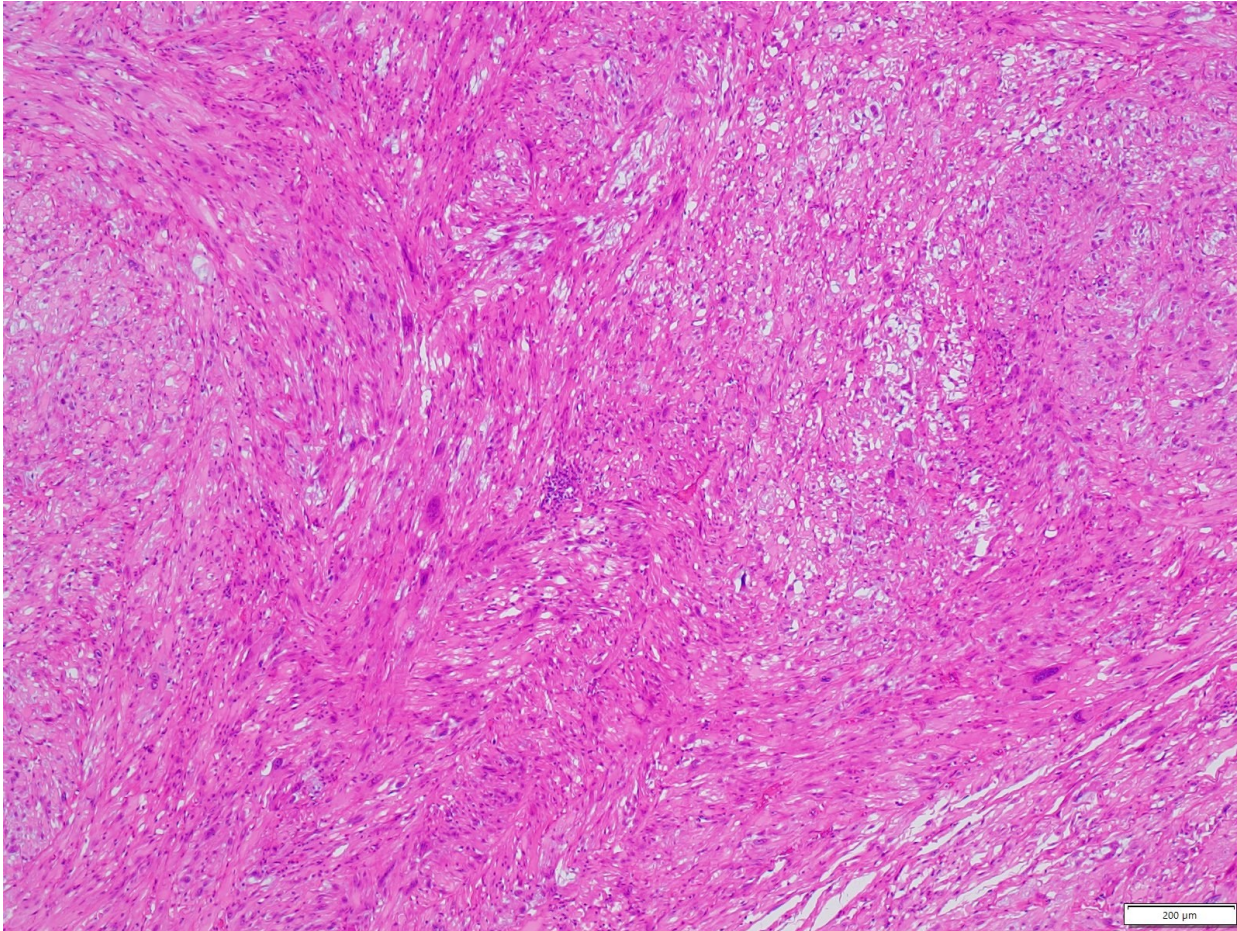
手術材料 対物4倍



手術材料 対物20倍



手術材料(未配布)  
対物4倍



手術材料(未配布)  
対物20倍

